

COUNTY SURVEYORS FILE DATA
DO NOT REMOVE FROM OFFICE

FILED
RECEIVED
JUN 10 1969
COUNTY SURVEYOR
LOUGLAS COUNTY, ORE

MAP FILE M 38 A-1

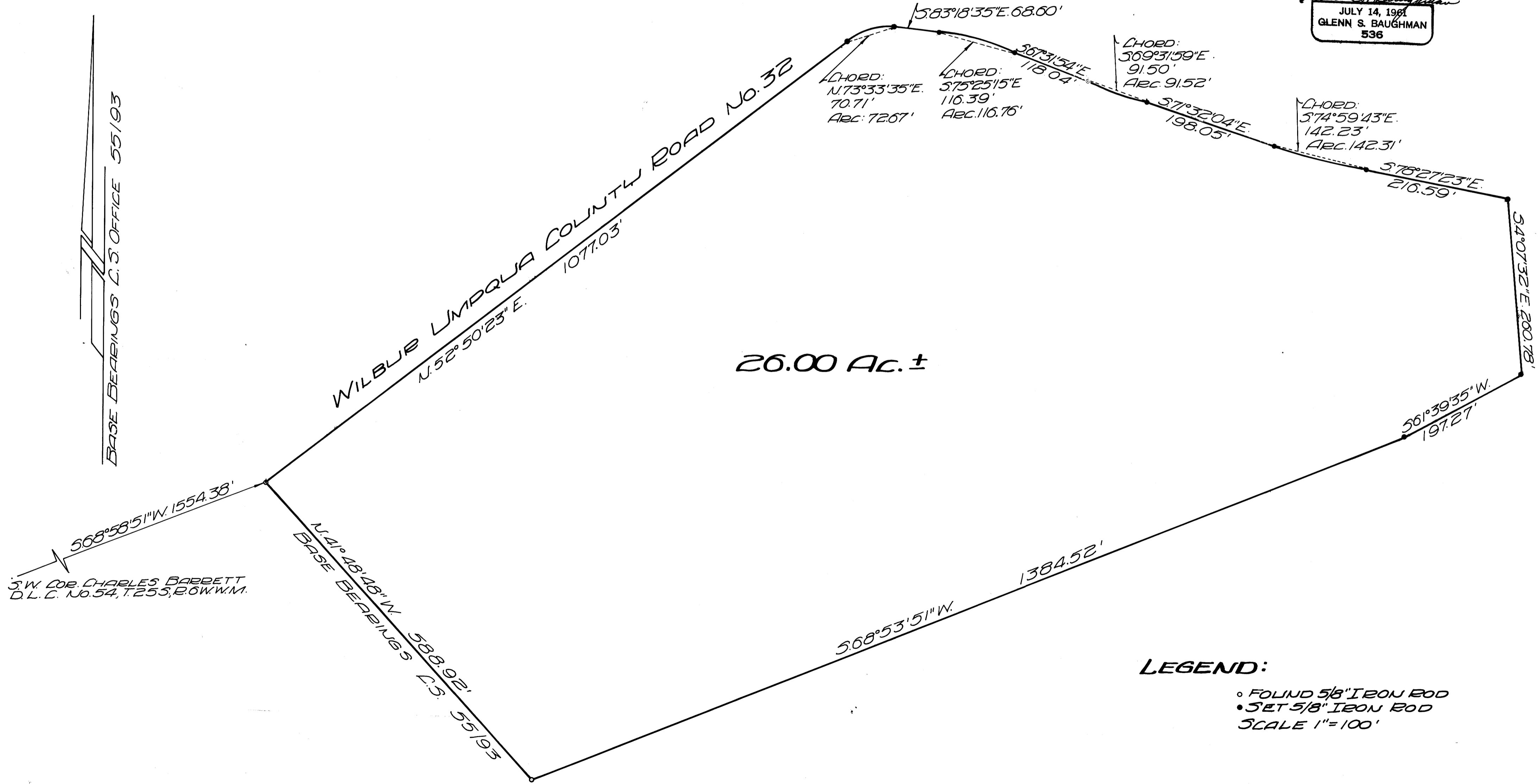
SURVEYED FOR DEED DESCRIPTION

LOCATED IN SECTS 29 & 32 TOWNSHIP 25 S, RANGE 6 W. W.M.

SURVEYED FOR RALPH WIESE

SURVEYED BY BAUGHMAN & ACKARET INC. MAY 19, 1969

REGISTERED
OREGON
LAND SURVEYOR
Glenn S. Baughman
JULY 14, 1961
GLENN S. BAUGHMAN
536



LEGEND:
○ FOUND 5/8" IRON ROD
● SET 5/8" IRON ROD
SCALE 1"=100'

MAP FILE M 38 A-1