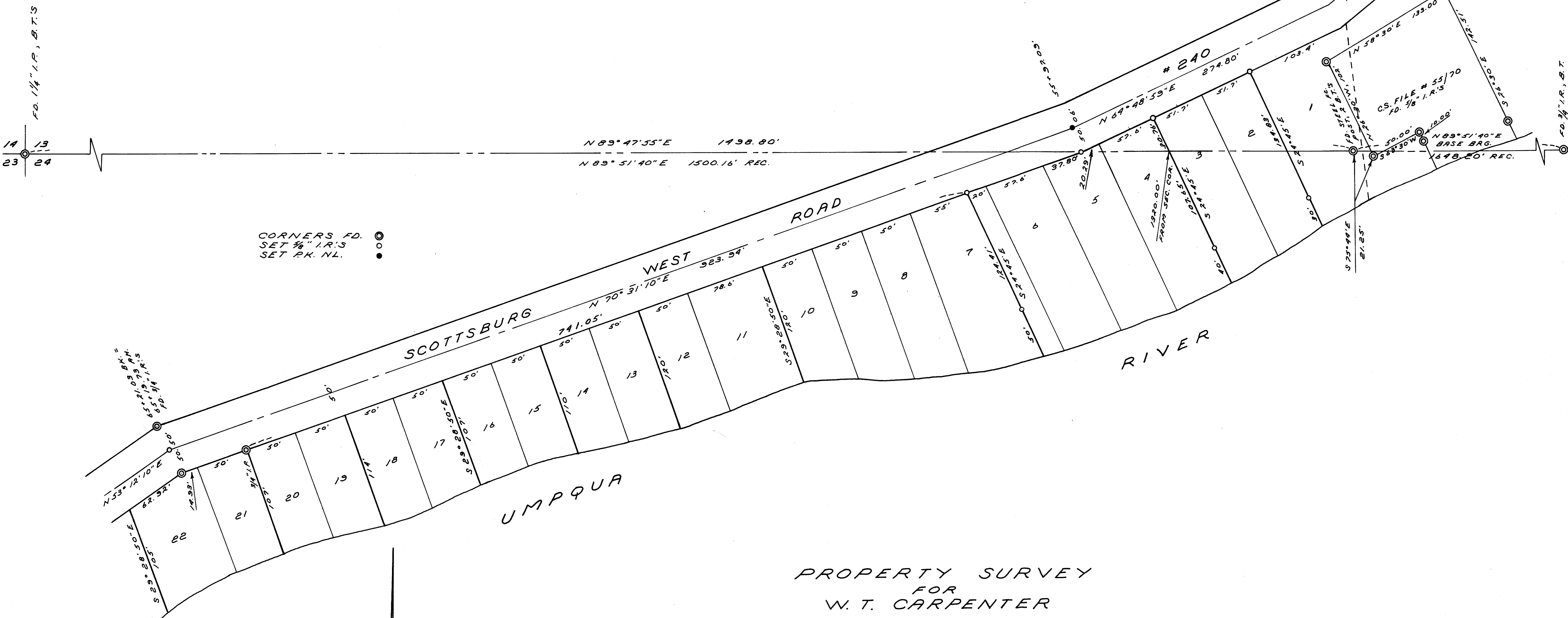


FILED  
RECEIVED  
JAN 17 1969  
COUNTY SURVEYOR  
DOUGLAS COUNTY, ORE.

MAP FILE M 37 # 8



CORNERS FD.  
SET 3/8" I.R.'S  
SET P.K. NL.

PROPERTY SURVEY  
FOR  
W. T. CARPENTER  
SECS. 13 & 24, T 22S, R 10 W, W. M.  
"UNRECORDED MYRTLE BEACHES"  
JANUARY 1969 SCALE: 1" = 60'

REGISTERED  
OREGON  
LAND SURVEYOR

*Richard J. Hintz*

MAY 13, 1960  
RICHARD J. HINTZ  
497

COUNTY SURVEYORS FILE DATA  
DO NOT REMOVE FROM OFFICE

MAP FILE M 37 # 8