

COUNTY SURVEYORS FILE DATA
DO NOT REMOVE FROM OFFICE

SURVEY TO ESTABLISH PROPERTY CORNERS
IN SEC. 24, T30S, R6W. W.M., RIDDLE, ORE.

SURVEYED FOR - DR. CARL EVERETT
SURVEYED BY - W.S. BARNES

MAY 1969
SCALE 1" = 20'

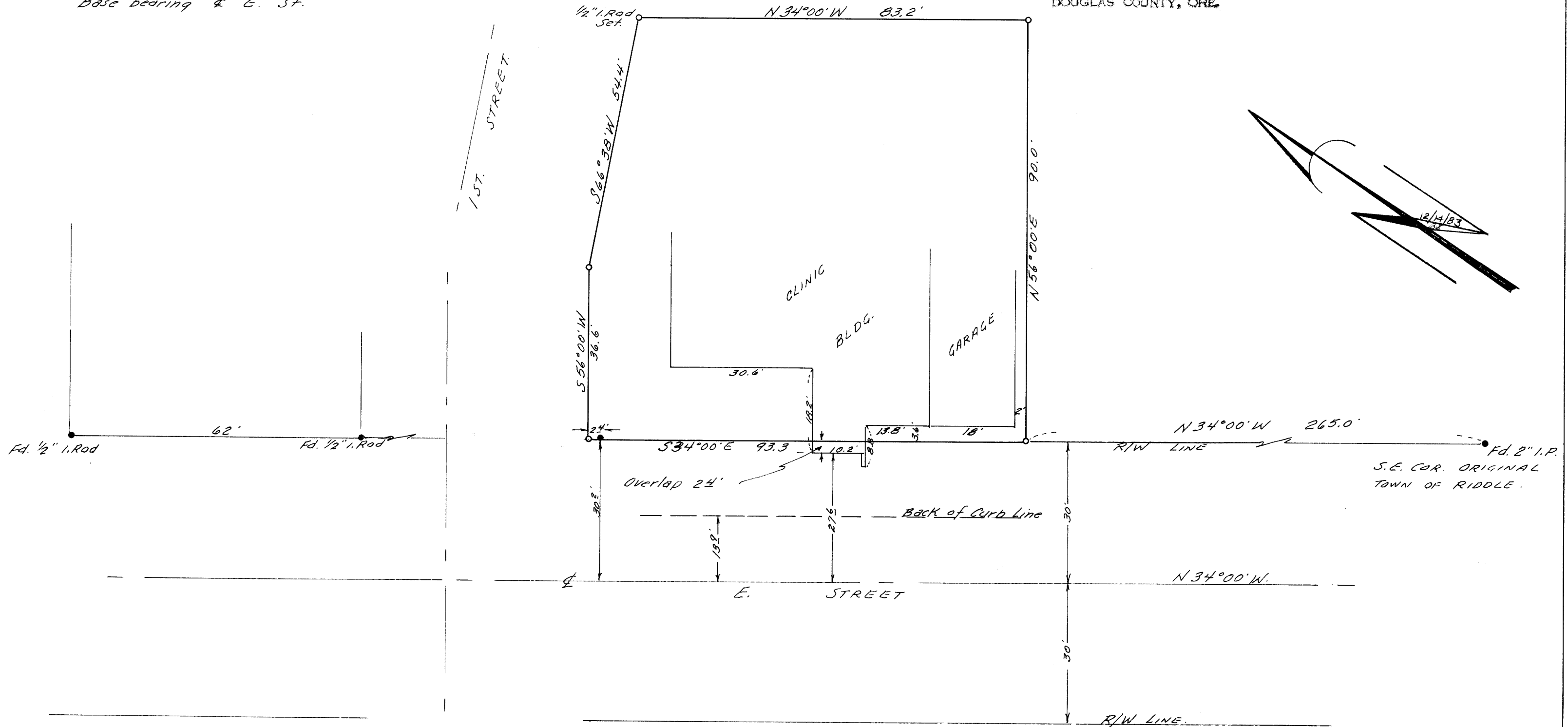


FILED
RECEIVED

MAY 27 1969

COUNTY SURVEYOR
DOUGLAS COUNTY, ORE.

- Monuments found.
 - 3/4" I.Rods set, except as shown.
- Base bearing \pm E. St.



MAP FILE 37-1-77

MAP FILE 37-1-77

12/4/83