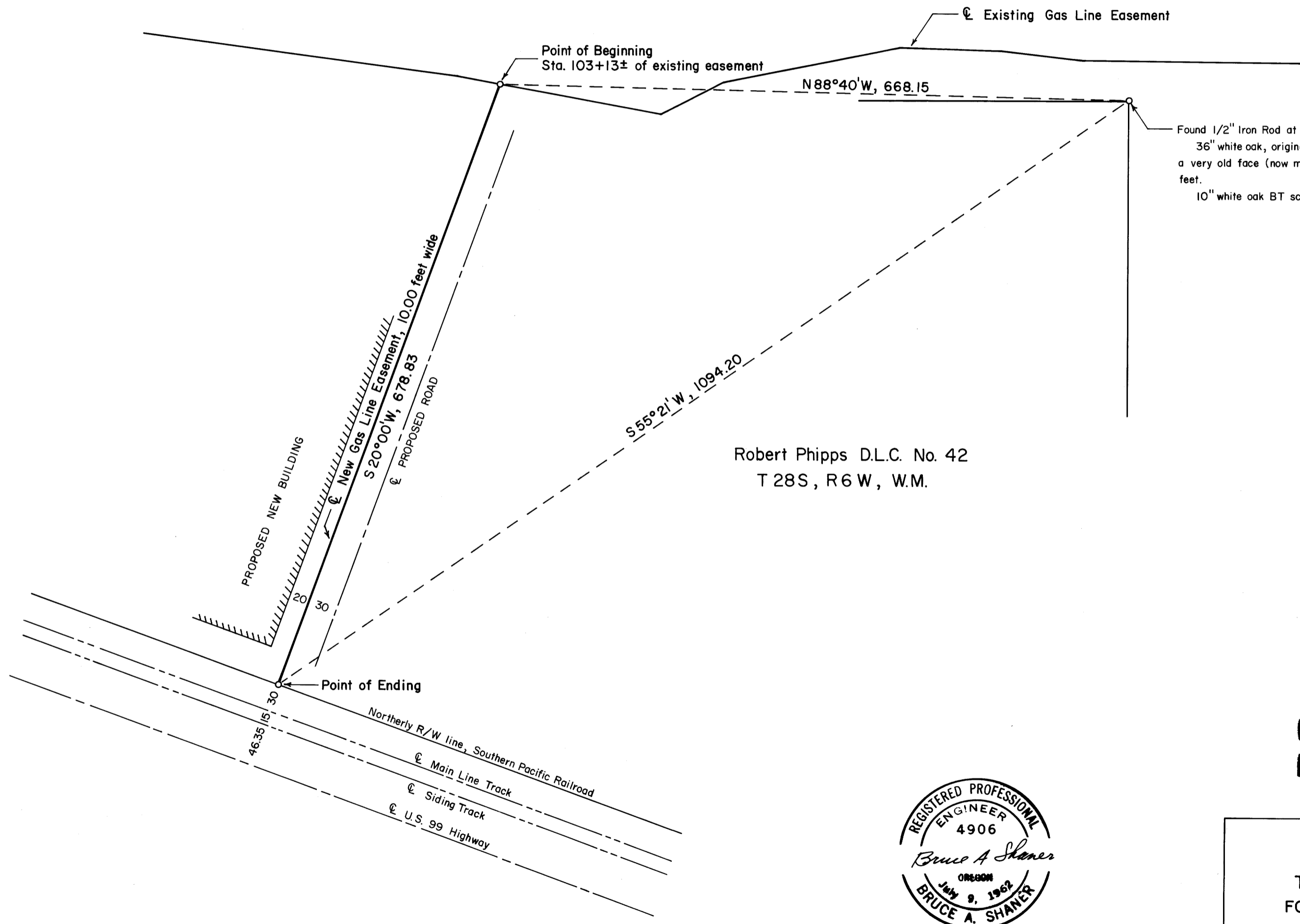


FILED
RECEIVED

JUN 2 1969

COUNTY SURVEYOR
DOUGLAS COUNTY, ORE.

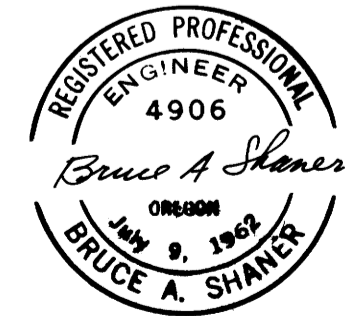
MAP FILE 37.1 75



Found 1/2" Iron Rod at N.E. corner Robert Phipps' D.L.C. No. 42, from which a :
 36" white oak, original BT with old scribes "C 4" visible on the south side and
 a very old face (now mostly rotted out) on the north side, bears S 12°E, 47.8
 feet.
 10" white oak BT scribed "DLC 42 T28S R6W", bears N2°E, 77.2 feet.

Robert Phipps D.L.C. No. 42
 T 28S, R 6W, W.M.

COUNTY SURVEYORS FILE DATA
 DO NOT REMOVE FROM OFFICE



GAS LINE EASEMENT SURVEY
 THROUGH ROSEBURG LUMBER COMPANY
 FOR CALIFORNIA-PACIFIC UTILITIES COMPANY

SCALE : 1" = 100'
 May 26, 1969

MAP FILE 37.1 75