

SURVEY TO ESTABLISH PROPERTY CORNERS IN SEC. 19, T.27 S., R.5 W. ROSEBURG, ORE.

SURVEYED FOR - G. KABLER
SURVEYED BY - W.S. BARNES

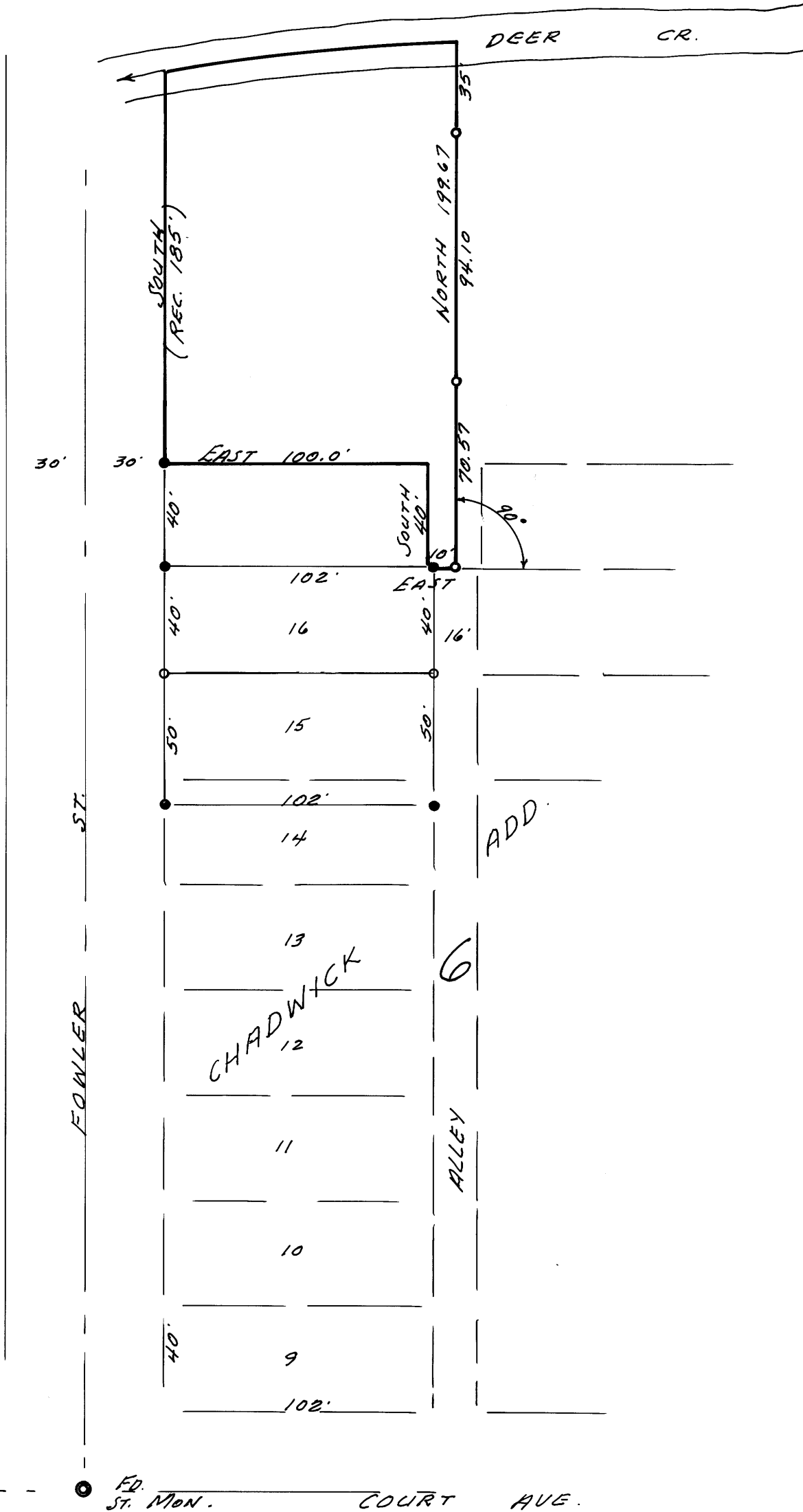
MAY, 1969
SCALE 1" = 50'

**COUNTY SURVEYORS FILE DATA
DO NOT REMOVE FROM OFFICE**

FILED
RECEIVED

MAY 29 1969

COUNTY SURVEYOR
DOUGLAS COUNTY, ORE.



- MONUMENTS FOUND
 - 3/4" I. RODS SET.
- BASE BEARING TAKEN FROM
& FOWLER ST.

