

SURVEY IN PORTION OF  
LOT 7, PLAT "B", DEER CREEK ORCHARDS TRACTS.  
DOUGLAS COUNTY, ORE.

SURVEYED FOR - PRESTON LEE  
SURVEYED BY - W.S. BARNES

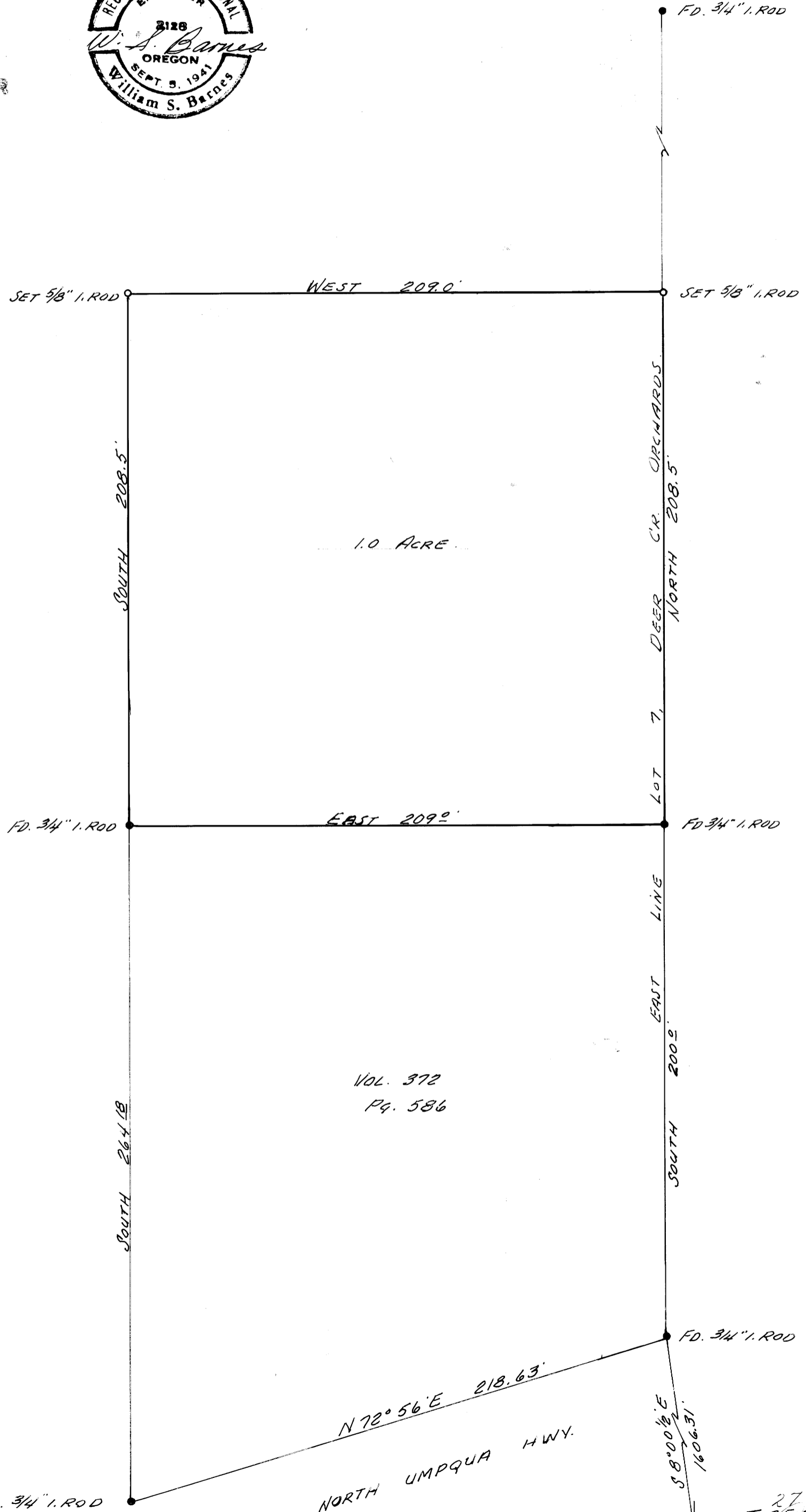
COUNTY SURVEYORS FILE DATA  
DO NOT REMOVE FROM OFFICE

MAY 1969  
SCALE 1" = 40'

FILED  
RECEIVED

MAY 20 1969

COUNTY SURVEYOR  
DOUGLAS COUNTY, ORE.



VOL. 372  
Pg. 586

27  
16 15 T 25 S, R 5 W. W.M.  
21 22