

1/4 COR. RESTORATION & SUB. OF SEC. NO. 35, TWP. 31 S., RG. 3 W.W.M.

SURVEYED FOR THE UMPQUA NATIONAL FOREST
TILLER RANGER DISTRICT, CONTRACT No. 002440

SURVEYED BY BAUGHMAN & ACKARET INC.

SCALE 1" = 400'

APRIL 1969

FILED
RECEIVED

APR 29 1969

COUNTY SURVEYOR
DOUGLAS COUNTY, ORE.

REGISTERED
OREGON
LAND SURVEYOR

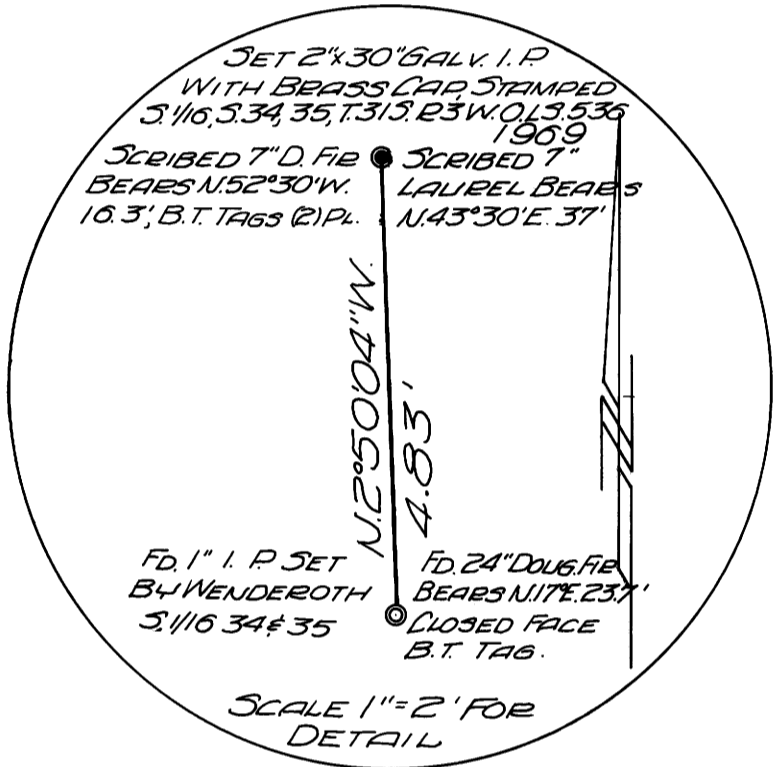
Glenn S. Baughman
JULY 14, 1961
GLENN S. BAUGHMAN
536

Fd. 15" Doug. Fir
Bears N35°W. 50'
SCRIBE VISIBLE
TREE DYING

Fd. 13" Doug. Fir
Bears N. 30°E. 110.4'
SCRIBE VISIBLE

Fd. 12" Cedar Bears
S. 74°W. 85' Scribe Visible
Fd. 22" Doug. Fir Stump
Bears S. 24°W. 21.4'
SCRIBE VISIBLE

Fd. 1" Galv. I.P. With Brass Cap
Marked County Surveyors Office
1/4 Cor. S. 26 & 35, T. 31 S., R. 3 W.
Also 3/4" I.P. Along Side



DETAIL I

Fd. 15" Doug. Fir
Bears N. 67°30'W. 5.9'
OPENED SCRIBE VISIBLE
Fd. 14" Doug. Fir Snags
N. 33°W. 17.5' SCABS.

Fd. 16" Fir Bears N. 31°E. 29' Blow Down, SCABS.
Fd. 12" Doug. Fir Bears N. 20°E. 46' Scribe Visible
ALL TREES EXCEPT SNAGS HAVE B.T. TAGS

SCRIBED 15" Doug. Fir
Bears N. 80°W. 3.5'
WITH B.T. TAG

SCRIBED 6" Hemlock
Bears N. 62°E. 10.9'
WITH B.T. TAG

Fd. 20" Douglas Fir
Bears N. 7°W. 75.2'
B.T. TAG

114 35 389°57'48"E. 2637.43' L 114

389°57'48"E. 2685.30'

114 36

Fd. 1" Galv. I.P. With Brass Cap
Marked County Surveyors Office
1/4 Cor. S. 34, 35, T. 31 S., R. 3 W.
1966, ALSO 1" I.P. ALONG SIDE IT.

Fd. 1" Galv. I.P. With Brass Cap
& STAMPED L. 5/116 S. 35, T. 31 S., R. 3 W.
O.L.S. 530 1969

Fd. 32" Doug. Fir Snags
Bears S. 80°W. 20.4'
SCRIBE VISIBLE
B.T. TAG
Fd. 1" I.P. & Brass Cap
Marked County Surveyors Office
1/4 Cor. S. 35 & 36, T. 31 S.,
R. 3 W. 1966

N. 0°12'41" W. 1338.19'

1323.15'

N. 0°10'01" W. 2640.1'

NOTE SEE
DETAIL I
N. 89°42'31"E. 2623.48' L. 5/116

SET 2"x30" GALV. I.P. WITH BRASS CAP
& STAMPED L. 5/116 S. 35, T. 31 S., R. 3 W. 1969
O.L.S. 530

SCRIBED 6" DOUGLAS FIR
Bears S. 1°E. 75.3'
& B.T. TAG

N. 0°12'41" W. 1338.19'

1323.15'

N. 1°51'00" E. 2617.50' (REC. N. 0°10' W. 2640.1')

Fd. 50" Doug. Fir
Bears WEST 66.3'
SCRIBE & B.T. TAG

Fd. 28" Hemlock
Bears N. 38°E. 12.5'
OPENED FACE TREE DEAD

SET 2"x30" GALV. I.P. & BRASS CAP
STAMPED 1/4 COR. S. 35 & T. 31 S., R. 3 W.
5, 2, T. 32 S., R. 3 W. O.L.S. 530, 1969

SCRIBED 18" Doug. Fir
Bears N. 40°30'E. 27.7'
WITH B.T. TAG

Fd. 52" Pine
Bears N. 42°W. 75.9'
SCRIBE VISIBLE

Fd. 6" LABEL
Bears N. 68°E. 5.2'
SCRIBE VISIBLE

3 2 N. 89°22'37"E. 2609.00' (REC. WEST 2619.54') 2

Cor. N. 89°22'37"E. 2620.12' (REC. WEST 2630.10') 2

2 1

Fd. 28" W. Fir Snags
Bears S. 31°W. 14.5'
Fd. 10" Hemlock
Bears S. 9°W. 27'
SCRIBE & B.T. TAGS
BOTH TREES

Fd. 1" Galv. I.P. With Brass Cap
Marked County Surveyors Office
3/4 Cor. S. 34, 35, T. 31 S., R. 3 W. 1966

SCRIBED 10" Doug. Fir
Bears S. 20°E. 45.1'
WITH B.T. TAG

Fd. 31" Pine
Bears S. 31°W. 105.6'
SCRIBE VISIBLE

Fd. 38" Pine
Bears S. 12°E. 178.2'
SCABS

Fd. 1" Galv. I.P. With Brass Cap
Marked County Surveyors Office
S. 35, 36, T. 31 S., R. 3 W. 1966
B.T. TAGS ON ALL BEARING TREES

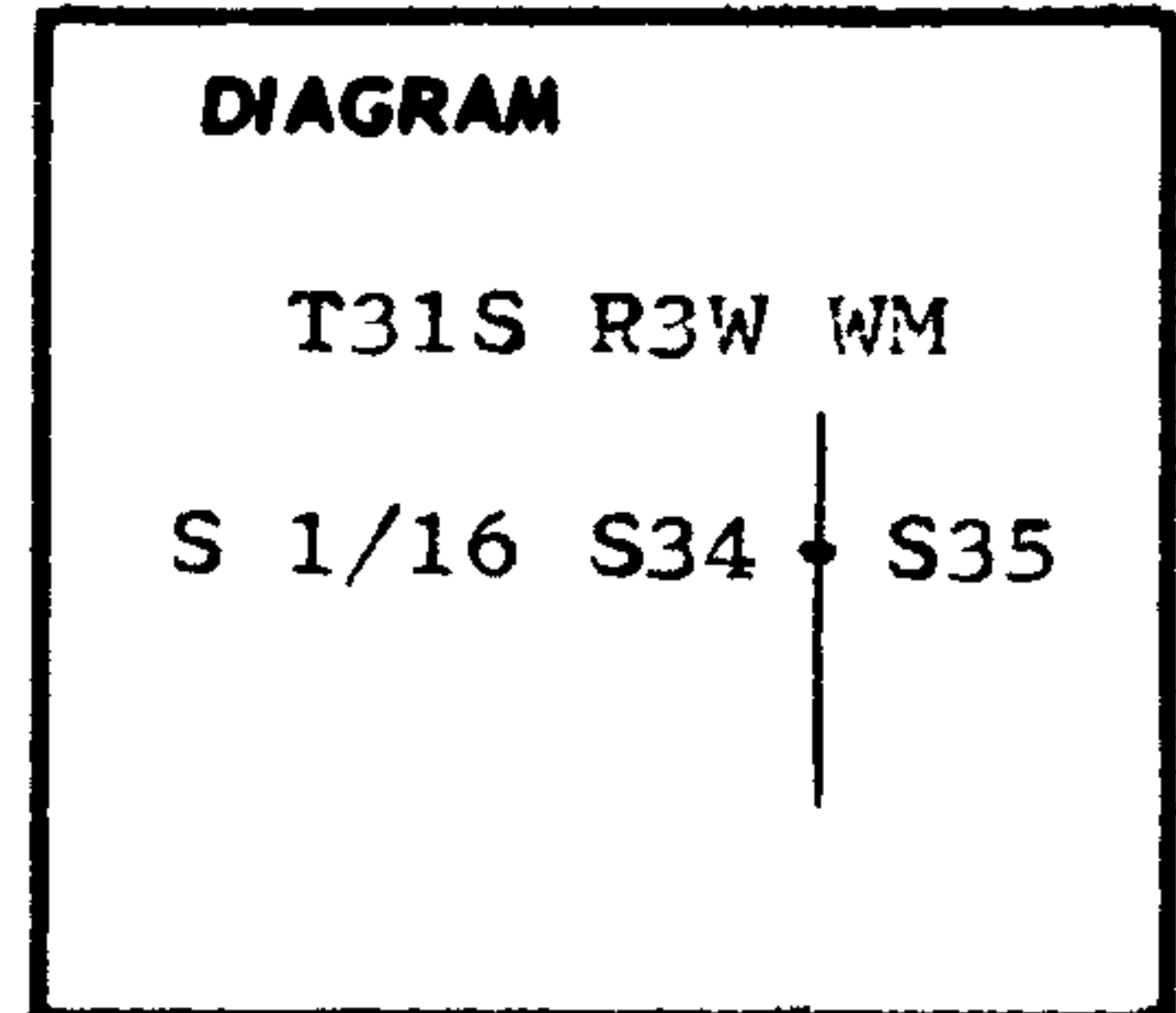
LEGEND:

- SET BRASS CAP
 - FOUND AS SHOWN
- SCALE 1" = 400'

CERTIFIED RECORD OF LAND CORNER MONUMENT AT 5N

History of original corner establishment:

None



Description of corner evidence found:

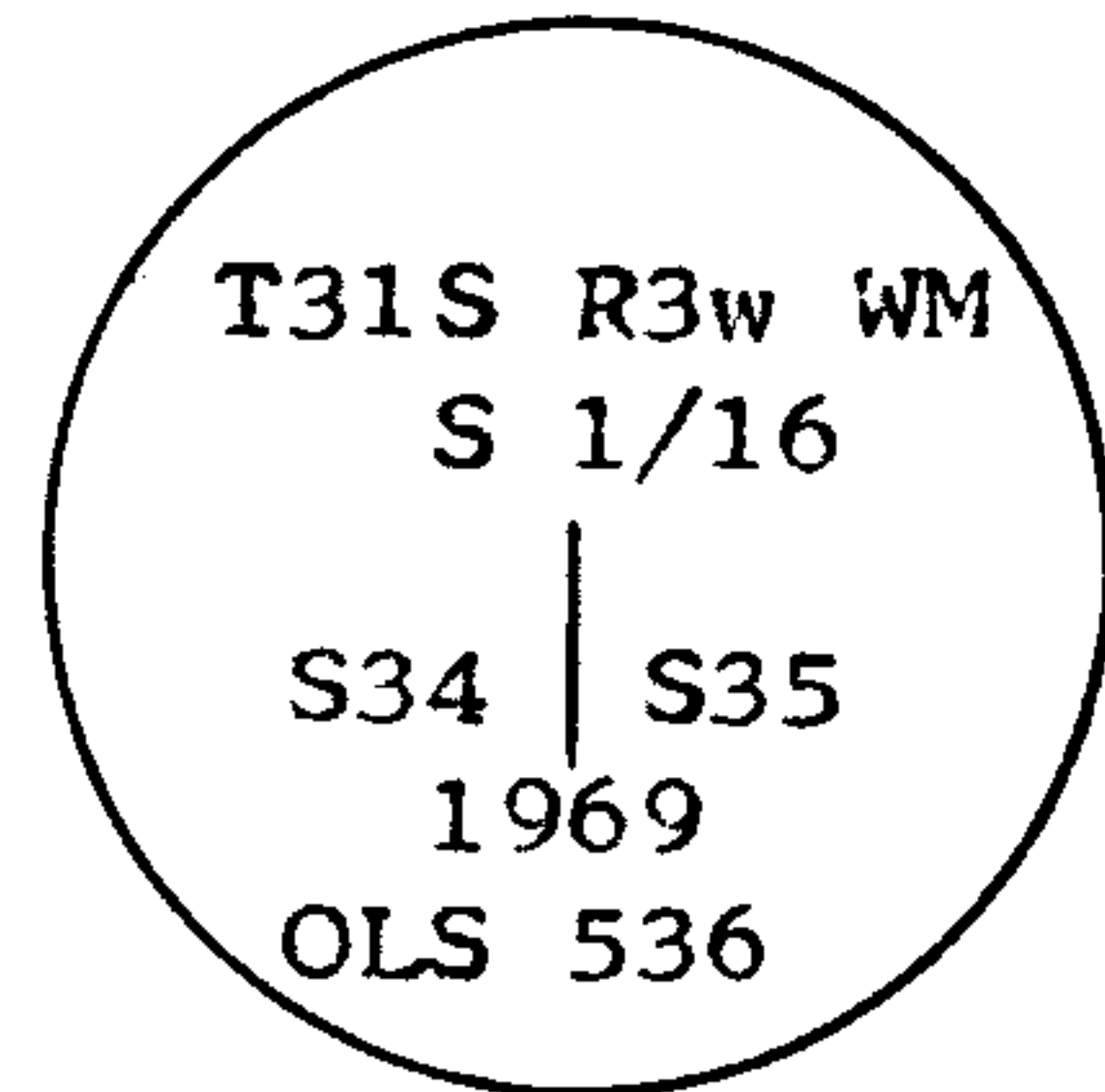
None

Description of monument and accessories I established to perpetuate the original location of this corner

I set a 2 inch by 30 inch galvanized iron pipe with brass cap, 26 inches in the ground.

I scribed a 7" Doug Fir: "S 1/16 S34 BT" which bears N52 1/2°W 16.3 ft. Placed BT tags
I scribed a 7" Laurel : "S1/16 S34 BT" which bears N43 1/2°E 37.0 ft. Placed BT tags.

I marked the disk



REGISTERED
OREGON
LAND SURVEYOR

Glenn S. Baughman

JULY 14 1961
GLENN S. BAUGHMAN
536

Office of SURVEYOR County of DOUGLAS
State of OREGON

I hereby certify that the within instrument was filed in this office for record on the 29 day of APRIL, 1969, at 4 o'clock P.m., (signed)

John W. ... (COUNTY OFFICIAL) by *Glenn S. Baughman* (DEPUTY)

CERTIFIED RECORD OF LAND CORNER MONUMENTATION

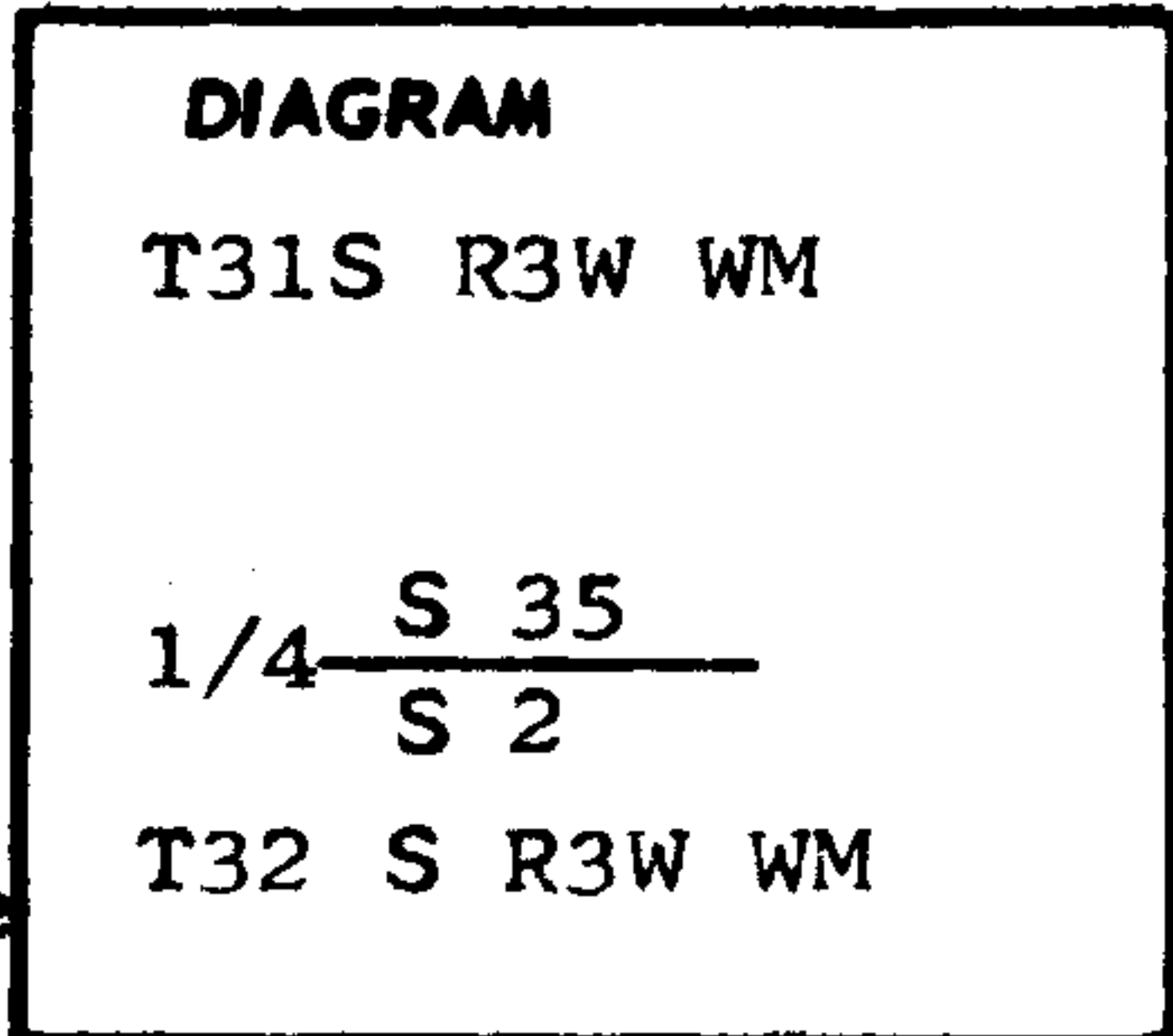
History of original corner establishment:

Original Survey by W.H. Byars, Deputy Surveyor under contract No. 152, dated June 3, 1871

Resurveyed by William M. Bushey under contract No. 620, dated June 17, 1893. Resurvey states:

Set Stone 12 x 9 x 8 inches, marked 1/4 on North face

Marked: 8" Laurel, North 3 lks Scribed 1/4 S
5" Laurel, South 3 lks Scribed 1/4 S



Description of corner evidence found:

No Evidence Found

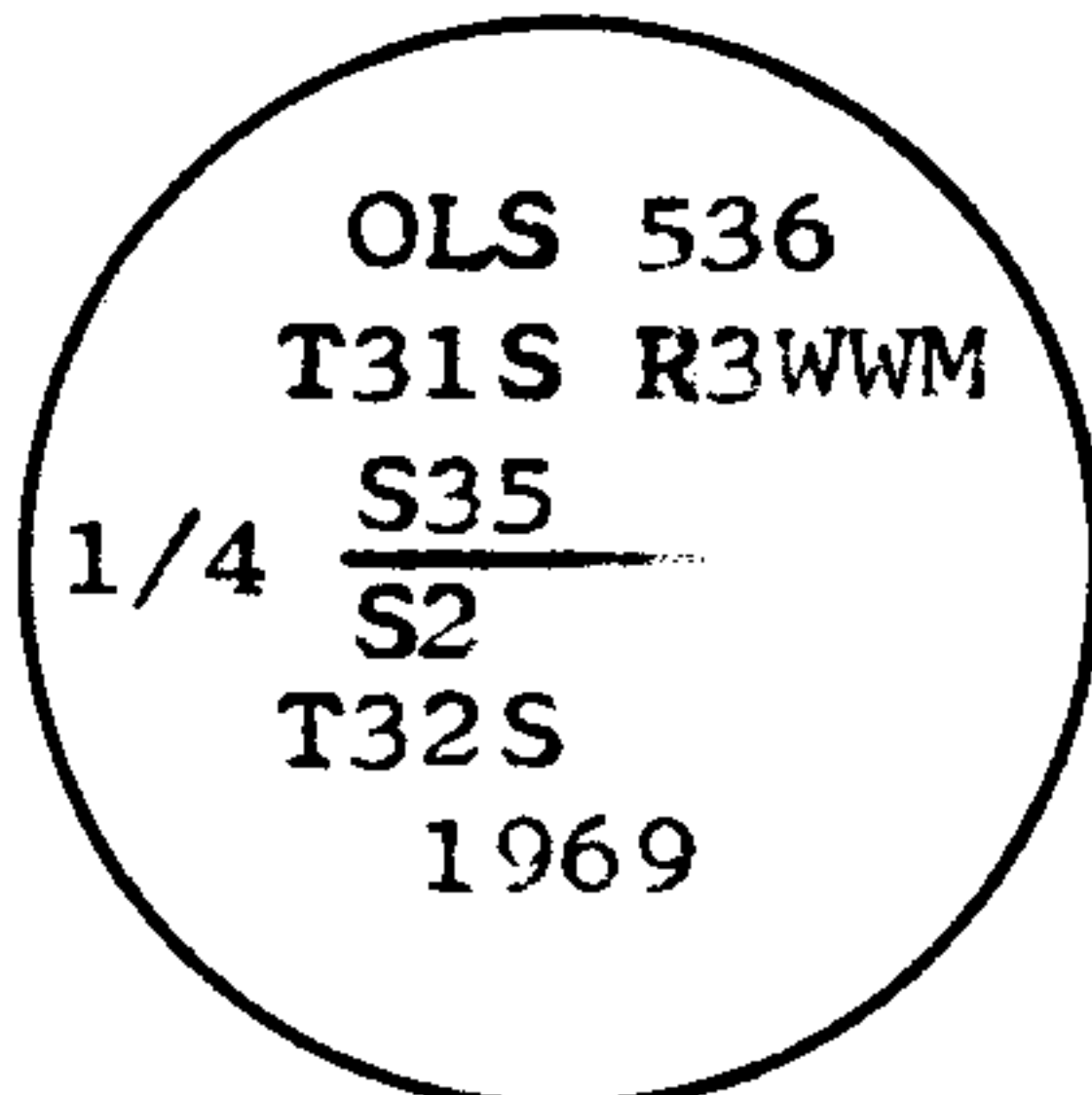
Description of monument and accessories I established to perpetuate the original location of this corner

I set a 2 inch by 30 inch galvanized iron pipe with brass cap, 26 inches in the ground.

I scribed a 18" Doug. Fir: "1/4 S 35 BT" which bears N46 1/2°E 27.7 ft. Placed BT tag.

I scribed a 10" Doug. Fir "1/4 S 2 BT" which bears S20°E 45.1 ft. Placed BT tag

I stamped the disk



REGISTERED
OREGON
LAND SURVEYOR
Glenn S. Baughman
JULY 14, 1961
GLENN S. BAUGHMAN
536

Office of SURVEYOR County of DOUGLAS
State of OREGON, I hereby certify that the within instrument was filed in this office for record on the 29 day of April, 1969, at 4 o'clock P.m., (signed)
James W. Byers (COUNTY OFFICIAL) by _____ (DEPUTY)

#147 T32-3

#195

Form R6-7100-57 (9/66)

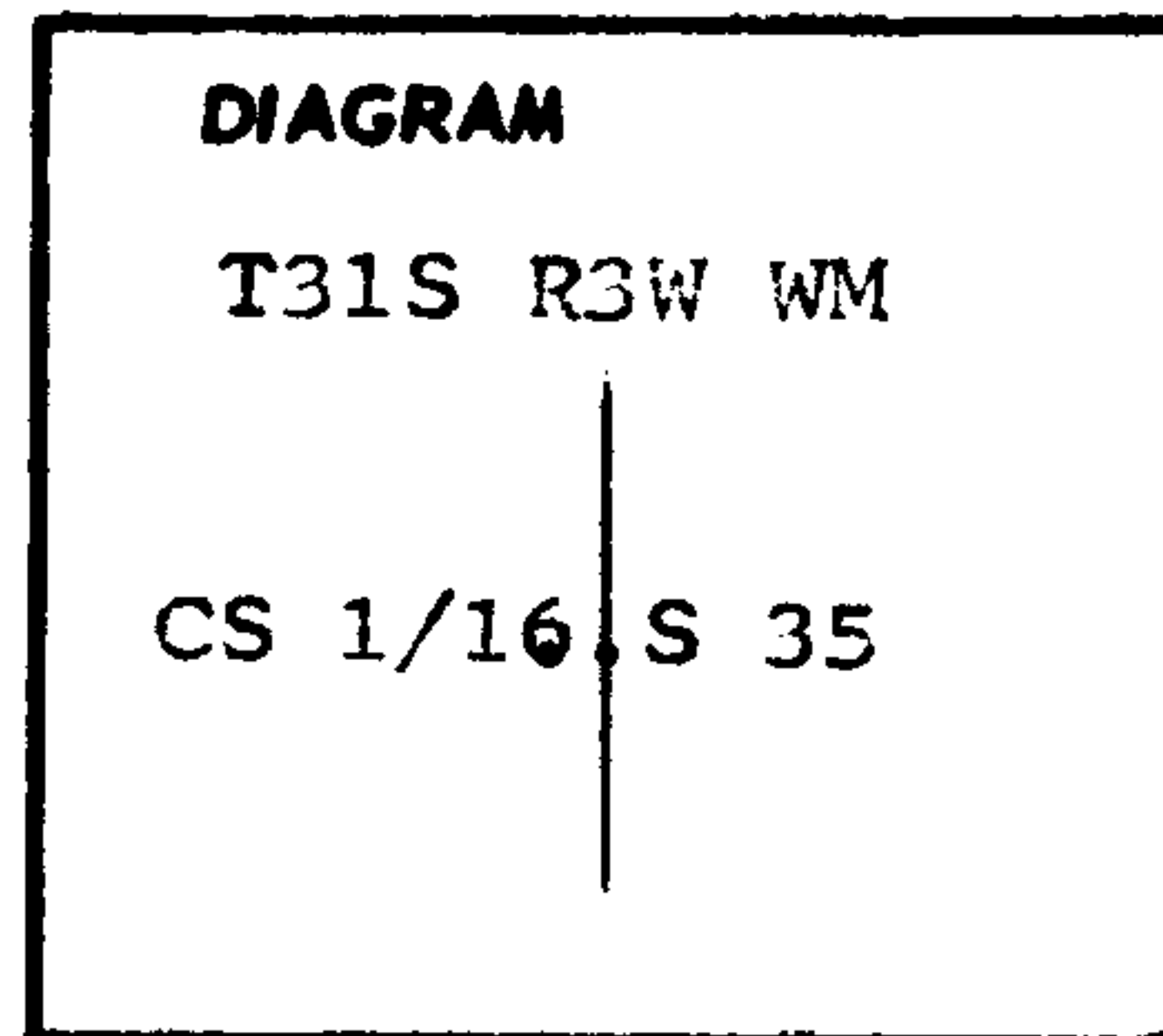
C.S File 55 / 114

Map File M.37-60

CERTIFIED RECORD OF LAND CORNER MONUMENTATION

History of original corner establishment:

None



Description of corner evidence found:

None

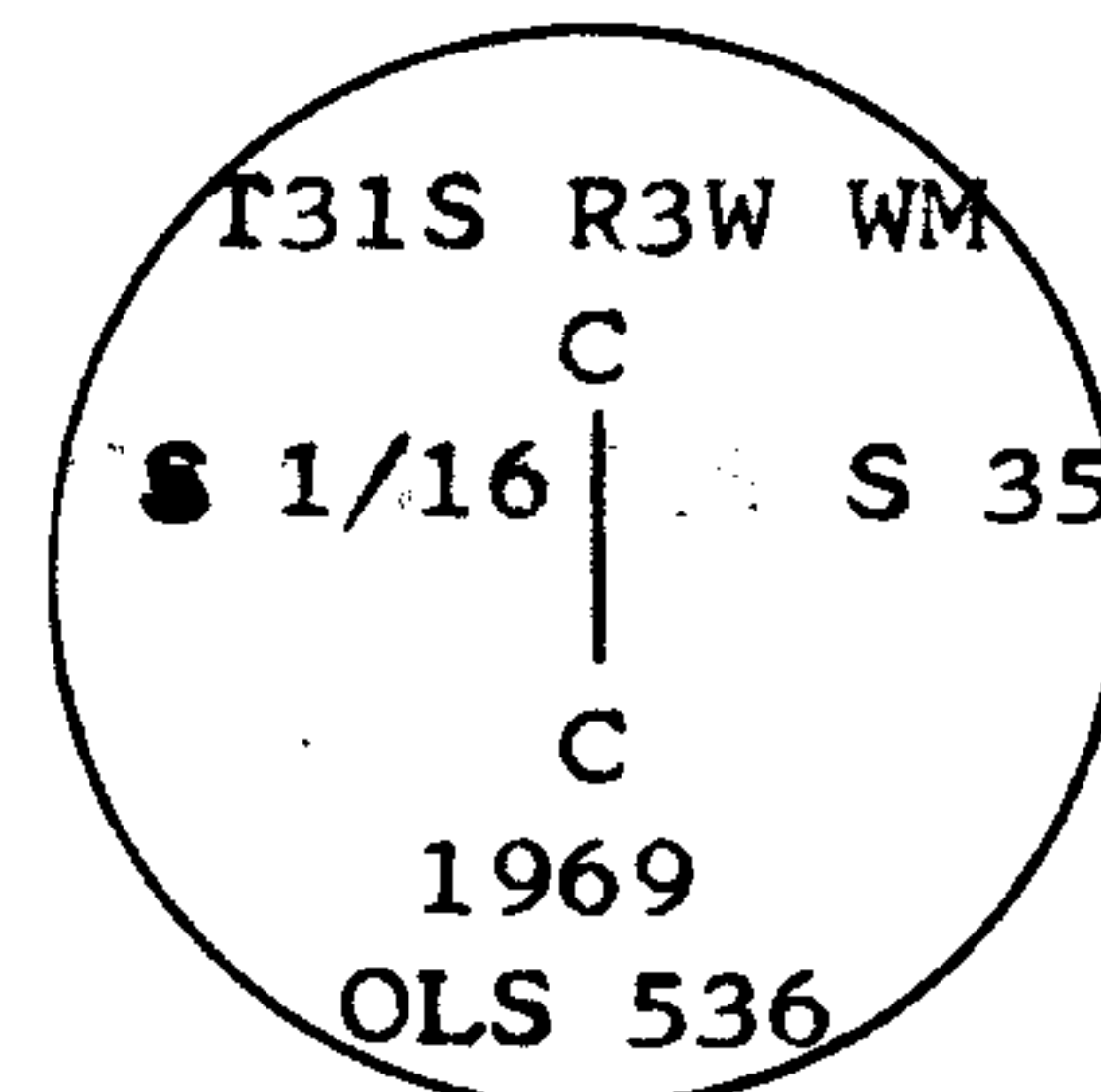
Description of monument and accessories I established to perpetuate the original location of this corner

I set a 2 inch by 30 inch galvanized iron pipe with brass cap, 26 inches in the ground.

I scribed a 18" Douglas Fir: "CS 1/16 S35 BT" which bears N65°W 22.4 ft. I placed BT tag.

I scribed a 8" Douglas Fir: "CS 1/16 S35 BT" which bears S 1°E 75.3 ft. I placed BT tag.

I stamped the disk



REGISTERED
OREGON
LAND SURVEYOR

Glenn S. Baughman

JULY 14, 1961
GLENN S. BAUGHMAN
536

Office of SURVEYOR County of DOUGLAS
State of OREGON, I hereby certify that the within instrument was filed in this office
for record on the 29 day of APRIL, 1969, at 4 o'clock P.m., (signed)
James W. Byron by _____
(COUNTY OFFICIAL) (DEPUTY)

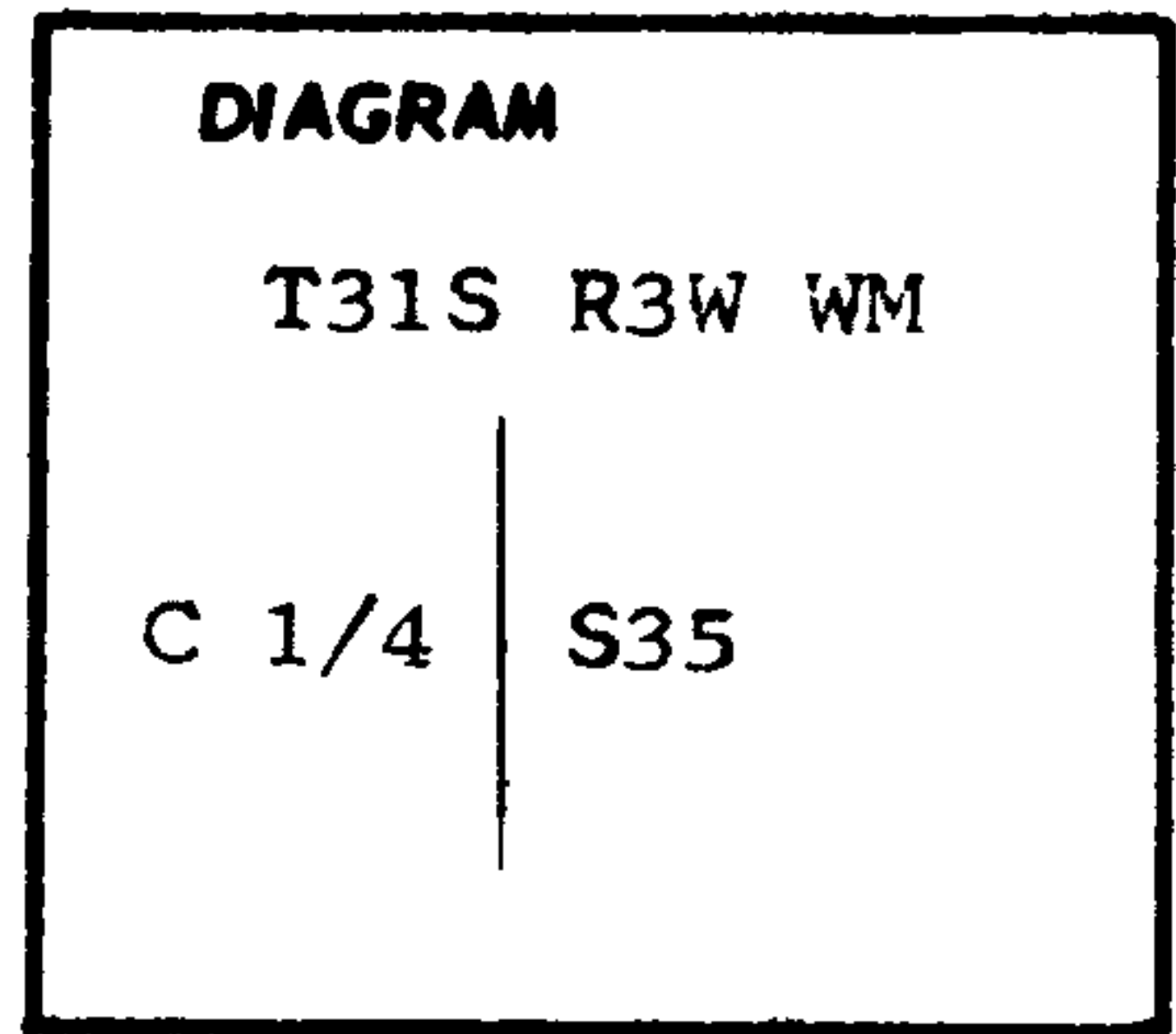
C.S File 55 / 114

Map File M 37 - 60

CERTIFIED RECORD OF LAND CORNER MONUMENTATION

History of original corner establishment:

None



Description of corner evidence found:

None

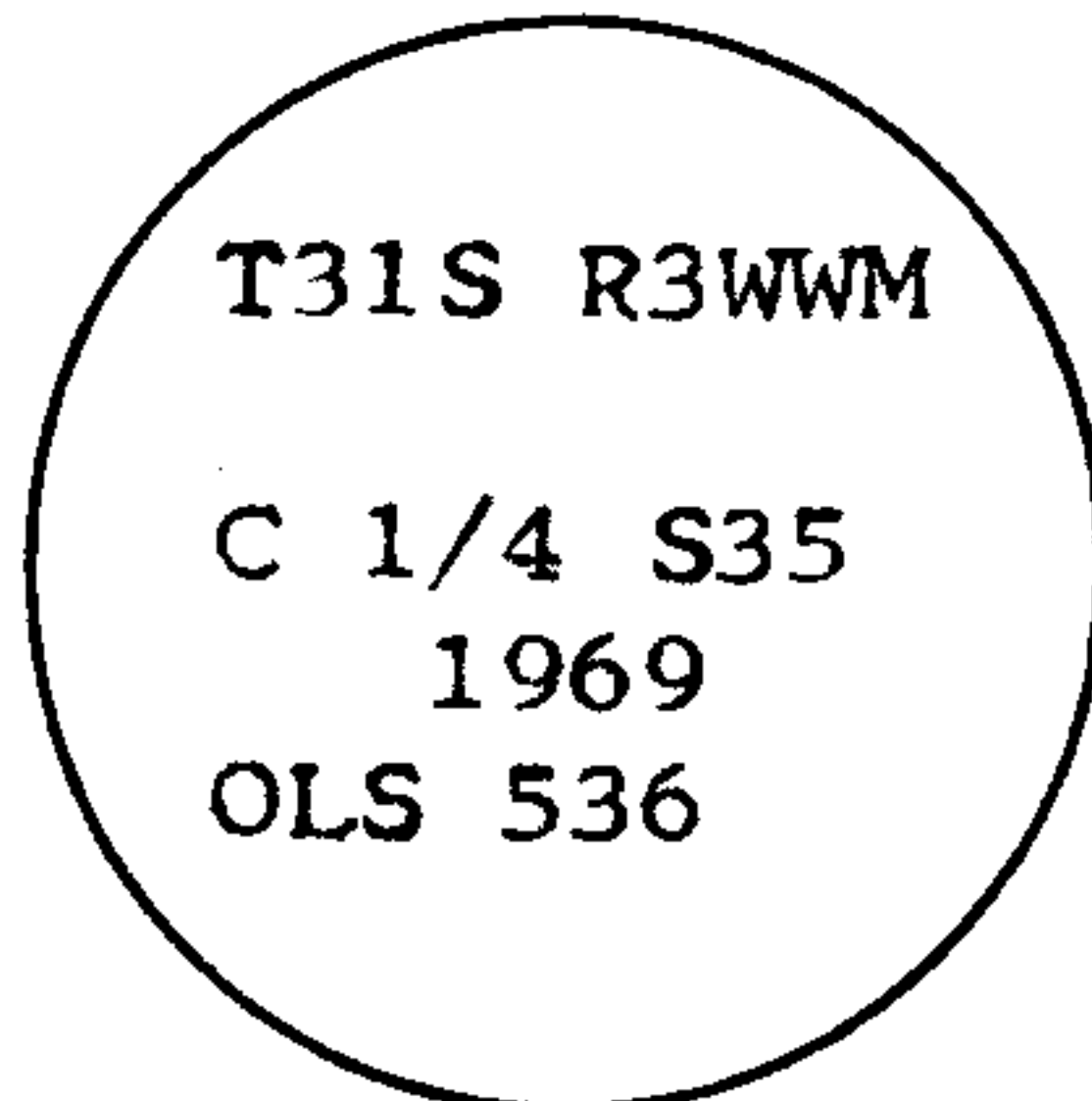
Description of monument and accessories I established to perpetuate the original location of this corner

I set a 1" by 30" galvanized iron pipe with a brass cap, 26 inches in the ground.

I scribed a 6" Hemlock: "C 1/4 S35 BT" which bears N62°E 10.9 ft. Placed BT tag.

I scribed a 15" Doug Fir "C 1/4 S35 BT" which bears N86°W 35.0 ft. Placed BT tag.

I marked the disk



REGISTERED
OREGON
LAND SURVEYOR

Glenn S. Baughman

JULY 14, 1961
GLENN S. BAUGHMAN
536

Office of SURVEYOR County of DOUGLAS
 State of OREGON, I hereby certify that the within instrument was filed in this office
 for record on the 29 day of APRIL, 1969, at 4 o'clock P.m., (signed)
James W. Cyron by _____
 (COUNTY OFFICIAL) (DEPUTY)

#196