

COUNTY SURVEYORS FILE DATA
DO NOT REMOVE FROM OFFICE

A PORTION OF LOT 2, EDEN ORCHARDS

SURVEYED FOR DICK MUSTARD

SURVEYED BY DON E. GARRETT

APRIL, 1969

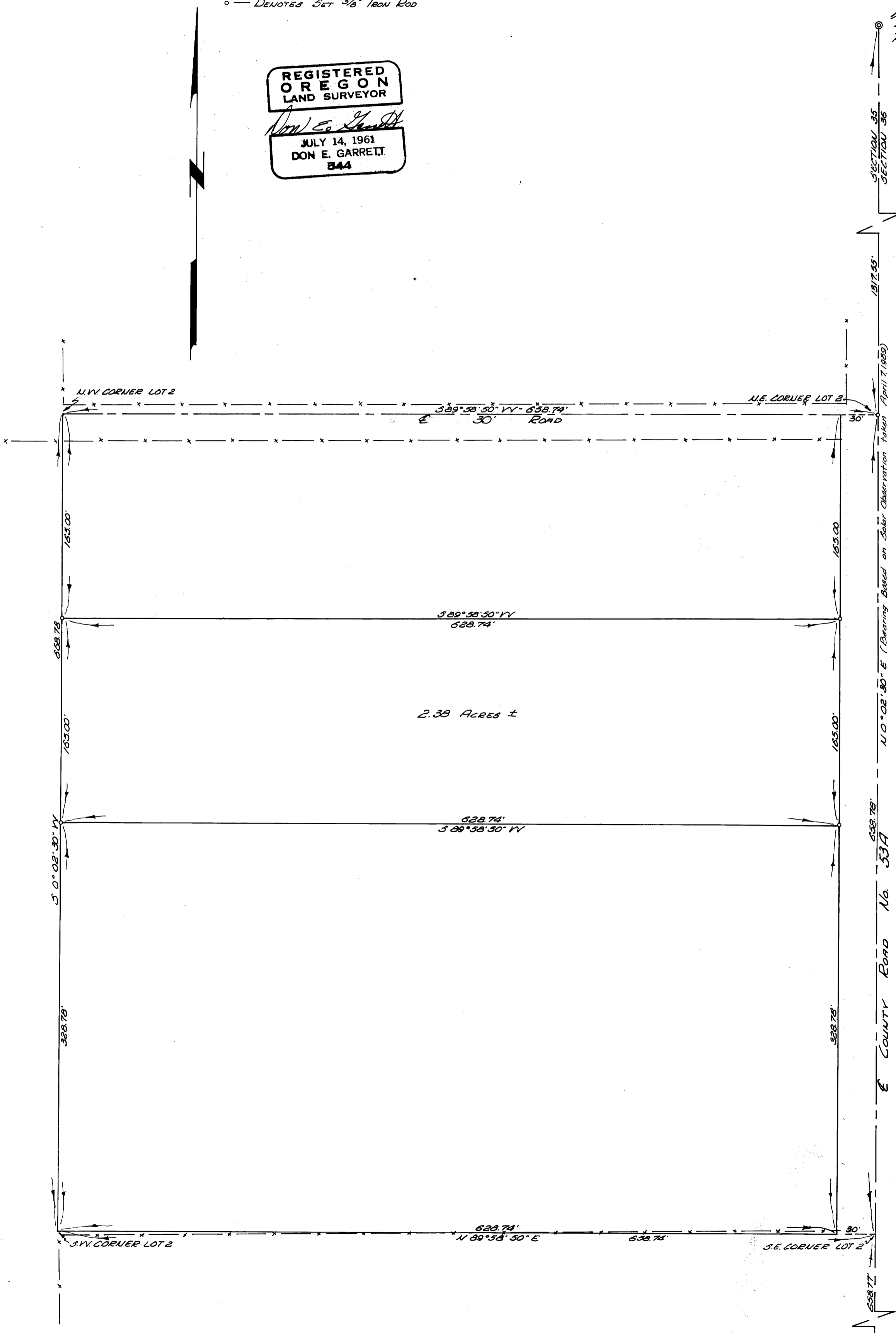
SCALE: 1" = 60'

o — DENOTES SET 3/4" IRON ROD

REGISTERED
OREGON
LAND SURVEYOR

Don E. Garrett
JULY 14, 1961
DON E. GARRETT
344

1/4 CORNER
SECTIONS 35 & 36
T28S, R7W, W.M.
P.O. 34" I. ROD
14° W. ORK - N135° E - 84.8'



FILED
RECEIVED

APR 25 1969

COUNTY SURVEYOR
DOUGLAS COUNTY, ORE.

SET 3/4" IRON ROD
@ SECTION CORNER
SECTIONS 35 & 36
T28S, R7W, W.M.
SECTIONS 1 & 2
T27S, R7W, W.M.

WITNESS CORNER
P.O. BEARS CAP
23' WEST TO CORNER
10' CEDAR - S85° W - 48.2'
10' CEDAR - N42° W - 35.0'