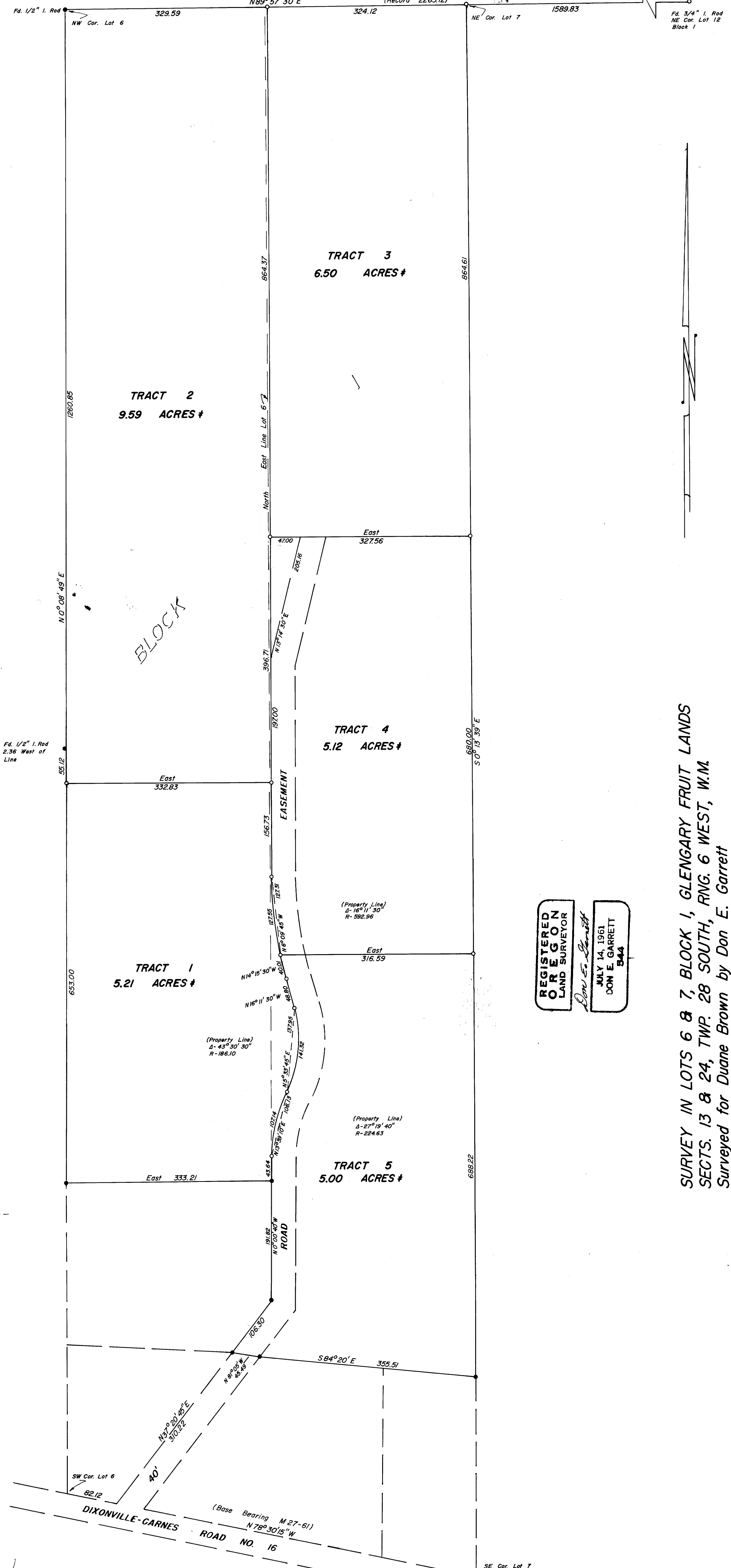


09-2E W



BLOCK

TRACT 3
6.50 ACRES ±

TRACT 2
9.59 ACRES ±

TRACT 4
5.12 ACRES ±

TRACT 1
5.21 ACRES ±

TRACT 5
5.00 ACRES ±

REGISTERED
OREGON
LAND SURVEYOR

Don E. Garrett

MAY 14, 1961
DON E. GARRETT
B44

SURVEY IN LOTS 6 & 7, BLOCK 1, GLENGARY FRUIT LANDS
SECTS. 13 & 24, TWP. 28 SOUTH, RNG. 6 WEST, W.M.
Surveyed for Duane Brown by Don E. Garrett
April 1969

Scale 1" = 100'

○ - Set 5/8" I. Rod
● - Found 5/8" I. Rod

FILED
RECEIVED
APR 25 1969
COUNTY SURVEYOR
DOUGLAS COUNTY, ORE.

COPIES OF SURVEYORS FILE DATA
DUE FOR REMOVAL FROM OFFICE

MAP FILE M.37 + 50