

ROWE STREET

DIAMOND LAKE BLVD.
NEW RE-LOCATED CENTER 1967

STREET

WINCHESTER STREET

STREET

JACKSON STREET

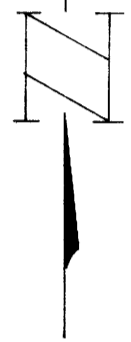
DOUGLAS STREET

FILED
RECEIVED

APR 18 1968

COUNTY SURVEYOR
DOUGLAS COUNTY, ORE.

C.S. 63/44
M37-47



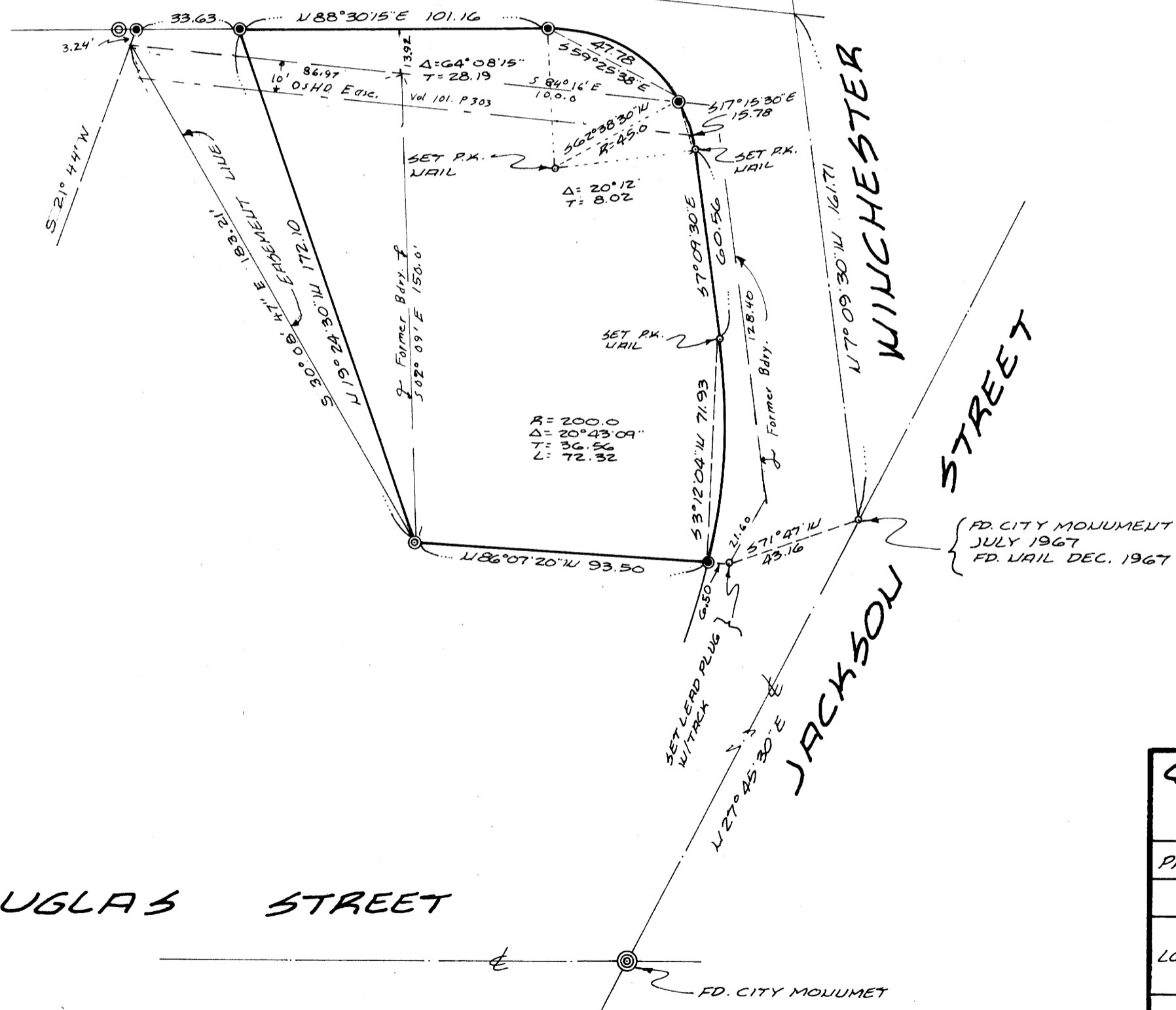
LEGEND

- ⊙ 5/8" IRON ROD SET
- ⊙ 5/8" IRON ROD FOUND
- DEVOTES AS SHOWN

NOTE:

SEE CITY'S PLANS FOR OVER ALL

COUNTY SURVEYORS FILE DATA
DO NOT REMOVE FROM OFFICE



QUILIER & BRITTON-CONSULTING ENGINEERS
751 WEST 12TH AVENUE
EUGENE, OREGON

PROJECT	PROPERTY SURVEY
FOR	STANDARD OIL CO. OF CALIFORNIA
LOCATION	1/4 W.M. PERRY D.L.C. NO. 38 T27 S. R. 5 W. W.M. ROSEBURG, DOUGLAS COUNTY, OREGON
BY L. BORUP DEC. 15, 1967 SCALE 1"=40'	Revised 9-6-68 JEB

M37-47

C.S. 63/44