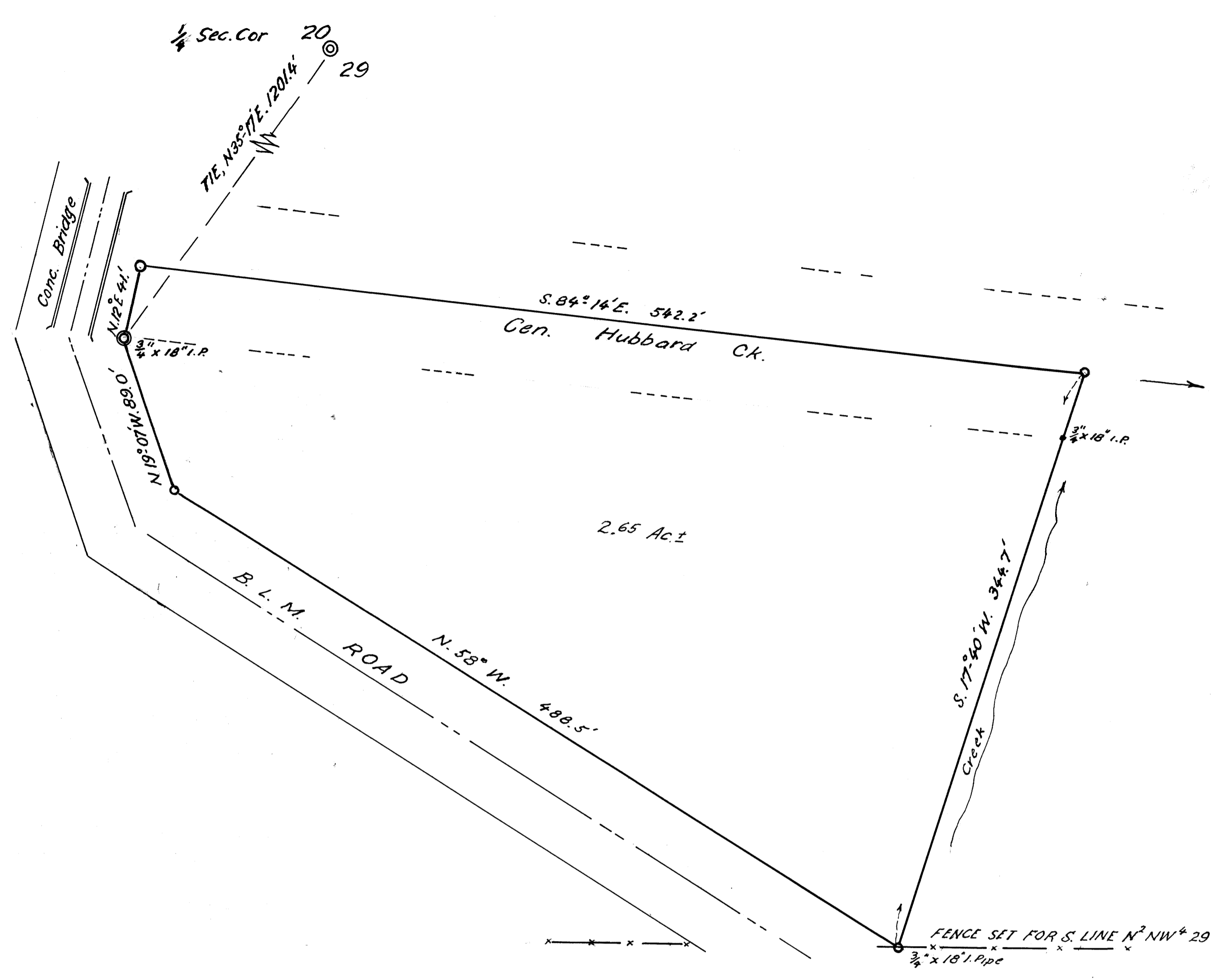


FILED
 RECEIVED
 APR 18 1969
 COUNTY SURVEYOR
 DOUGLAS COUNTY, ORE.



COUNTY SURVEYORS FILE DATA
 OR NOT REMOVE FROM OFFICE

RALPH PEERY et ux.
 ACREAGE IN N² NW⁴ SEC. 29
 T. 25 S.; R. 7 W.; WIL. MER.
 DOUGLAS COUNTY, ORE.
 APR 1969 1" = 50'

FILE M37-46

FILE M37-46