

DO NOT REMOVE FROM FILE

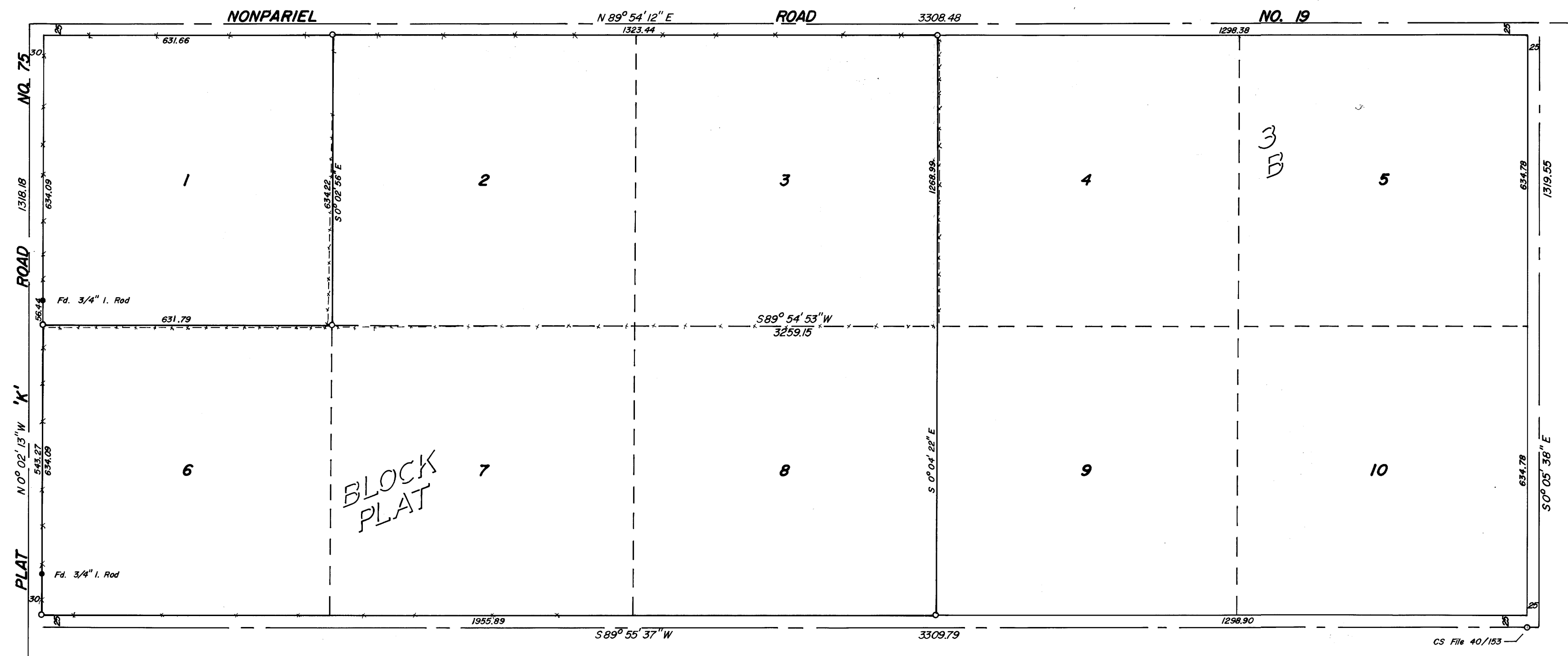
FILED
RECEIVED
APR 3 1969
COUNTY SURVEYOR
DOUGLAS COUNTY, OREG.

SURVEY IN BLOCK 3, PLAT B, SUTHERLIN LAND & WATER CO.
Surveyed for Royal Abeene by Don E. Garrett
March 1969

Scale 1" = 200'

Bearings are based on Douglas County Engineers 'L' Line on Road No. 19 West of Property Surveyed, N67°24'32" E
The exterior lines of Block 3 were determined from the location of existing roads and right-of-way fencelines.

REGISTERED
OREGON
LAND SURVEYOR
Don E. Garrett
JULY 14, 1961
DON E. GARRETT
544



MAP FILE M37-39

MAP FILE M37-39