

DO NOT REMOVE FROM OFFICE

SURVEYED TO ESTABLISH LOT COR.

IN BLOCK 36 & 37, KINNEY'S IMPROVED PLAT, SEC. 18, T. 27S. R. 5W.

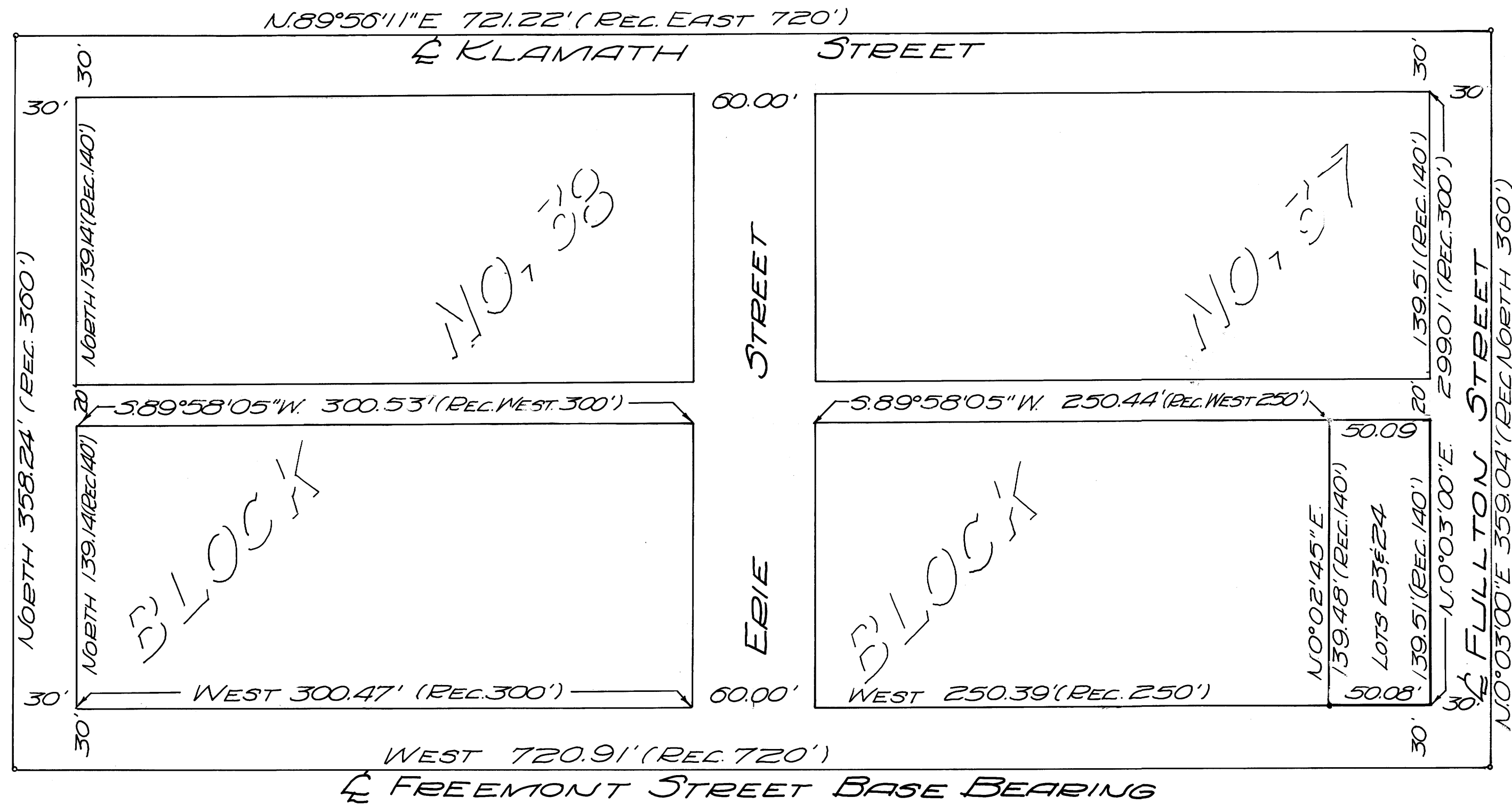
SURVEYED FOR ROY YOUNG FEB. 1969

SURVEY BY BAUGHMAN & ACKARET INC.

FILED *AS*
RECEIVED
MAR 3 1969
COUNTY SURVEYOR
DOUGLAS COUNTY, ORE.

REGISTERED
OREGON
LAND SURVEYOR

Glenn S. Baughman
JULY 14, 1961
GLENN S. BAUGHMAN
536



BASE BEARINGS KINNEY'S IMPROVED PLAT

LEGEND:

- SET 5/8" IRON ROD
 - FOUND STREET MONUMENT
- SCALE 1" = 50'