

SURVEY OF BLOCK 12 AMENDED MAP OF JONES ADDITION TO ROSEBURG, OREGON. SEC. 13, T. 27S, R. 6W.

SURVEYED FOR THE ARTIC CIRCLE DEC. 1968

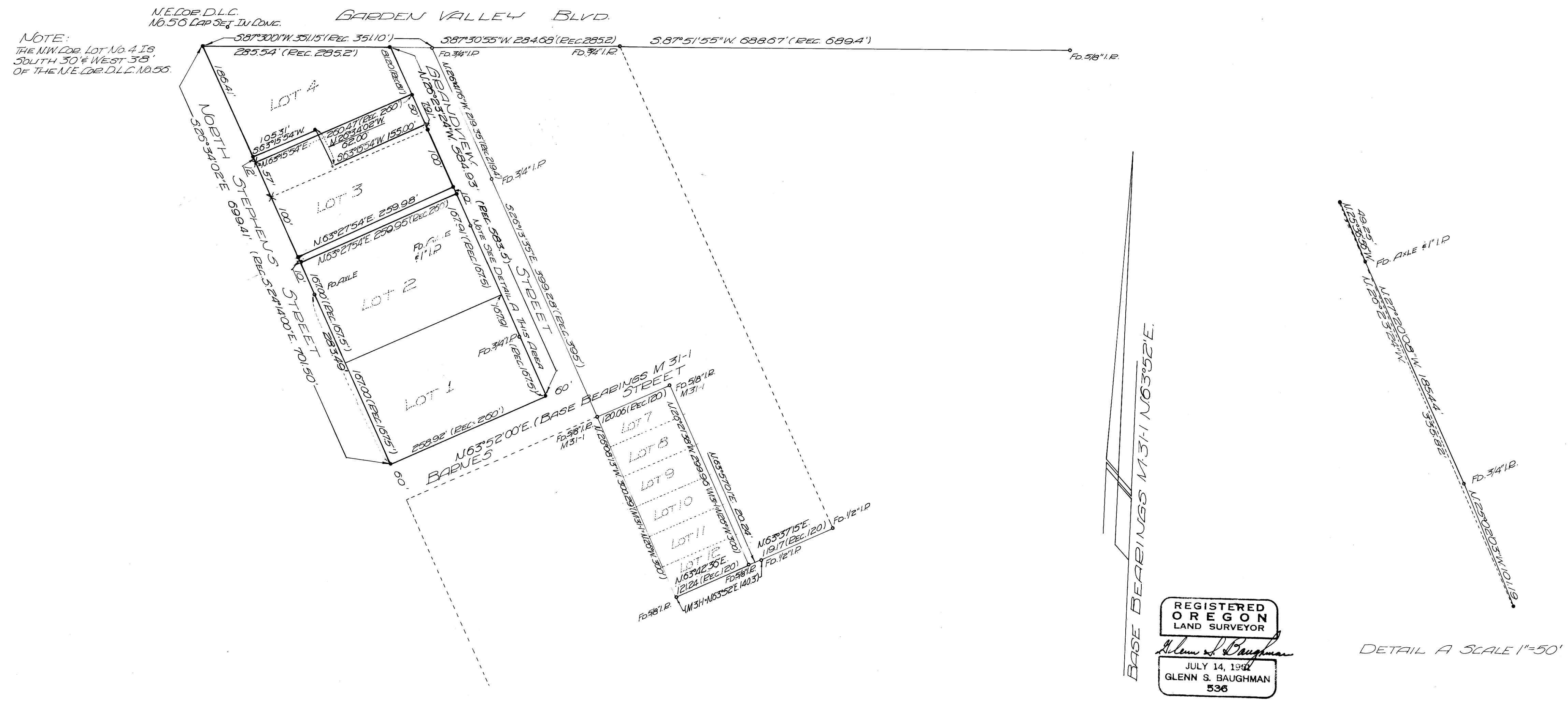
BY BAUGHMAN & ACKARET INC.

COUNTY SURVEYORS FILE DATA
DO NOT REMOVE FROM OFFICE

SCALE 1" = 100'

- AS SHOWN
- SET 5/8" IRON ROD
- SCRIBED x IN CONCRETE

Handwritten initials



M 37 + 3

M 37 + 3