

COURT RECORDS FILE DATA
DO NOT REMOVE FROM OFFICE

SURVEY IN BLOCK 9,
FIRST ADD. KINNEY'S IMPROVED PLAT.
ROSEBURG, ORE.

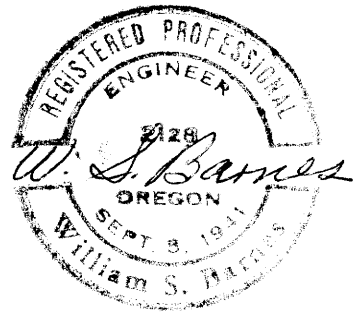
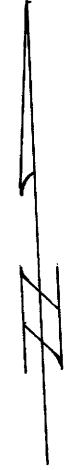
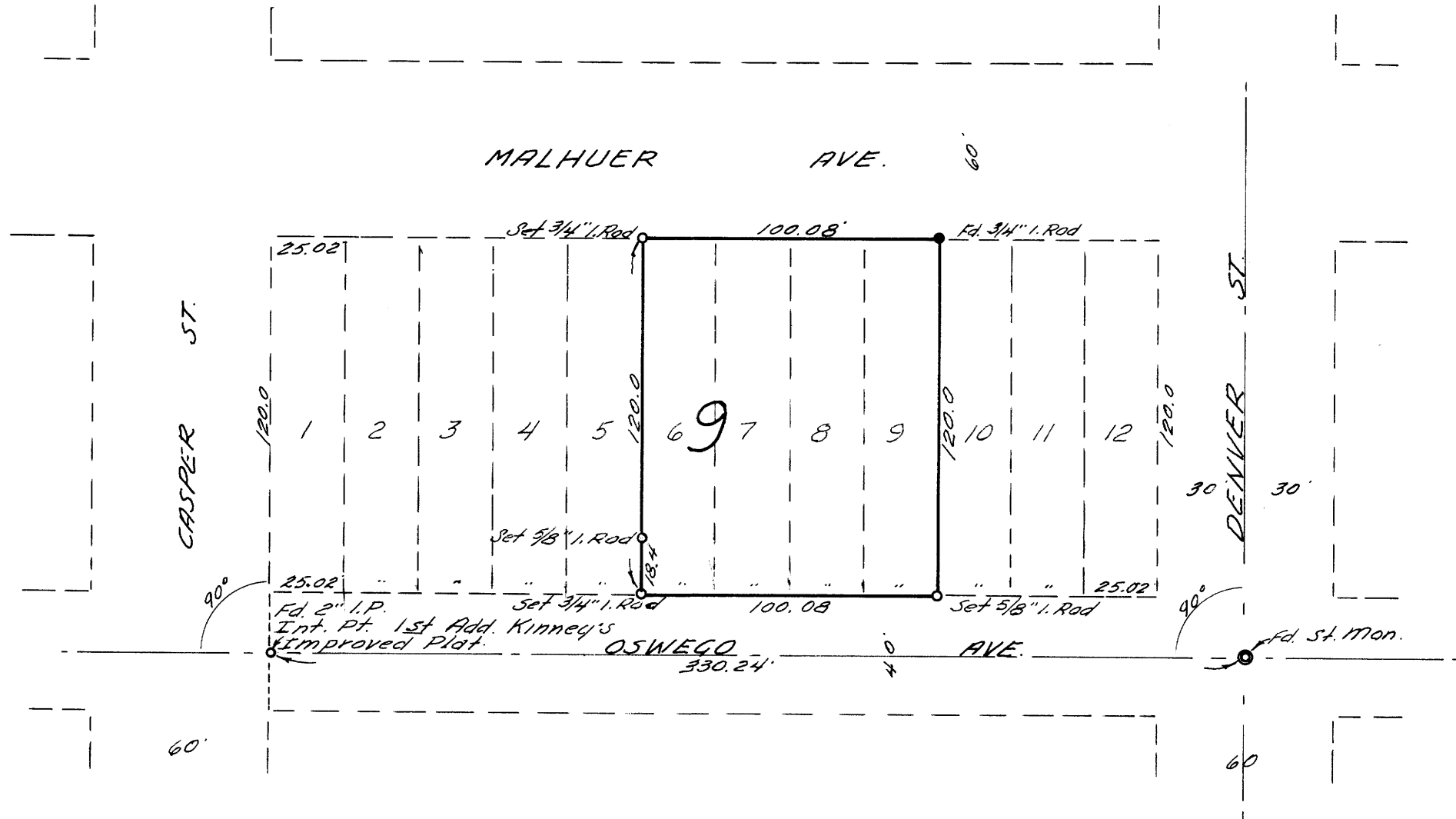
SURVEYED FOR - MR. STONE
SURVEYED BY - W. S. BARNES

MAR. 1969
SCALE - 1" = 50'

FILED
RECEIVED

MAR 13 1969

COUNTY SURVEYOR
DOUGLAS COUNTY, ORE.



MAP FILE M37 - 27

MAP FILE M37 - 27