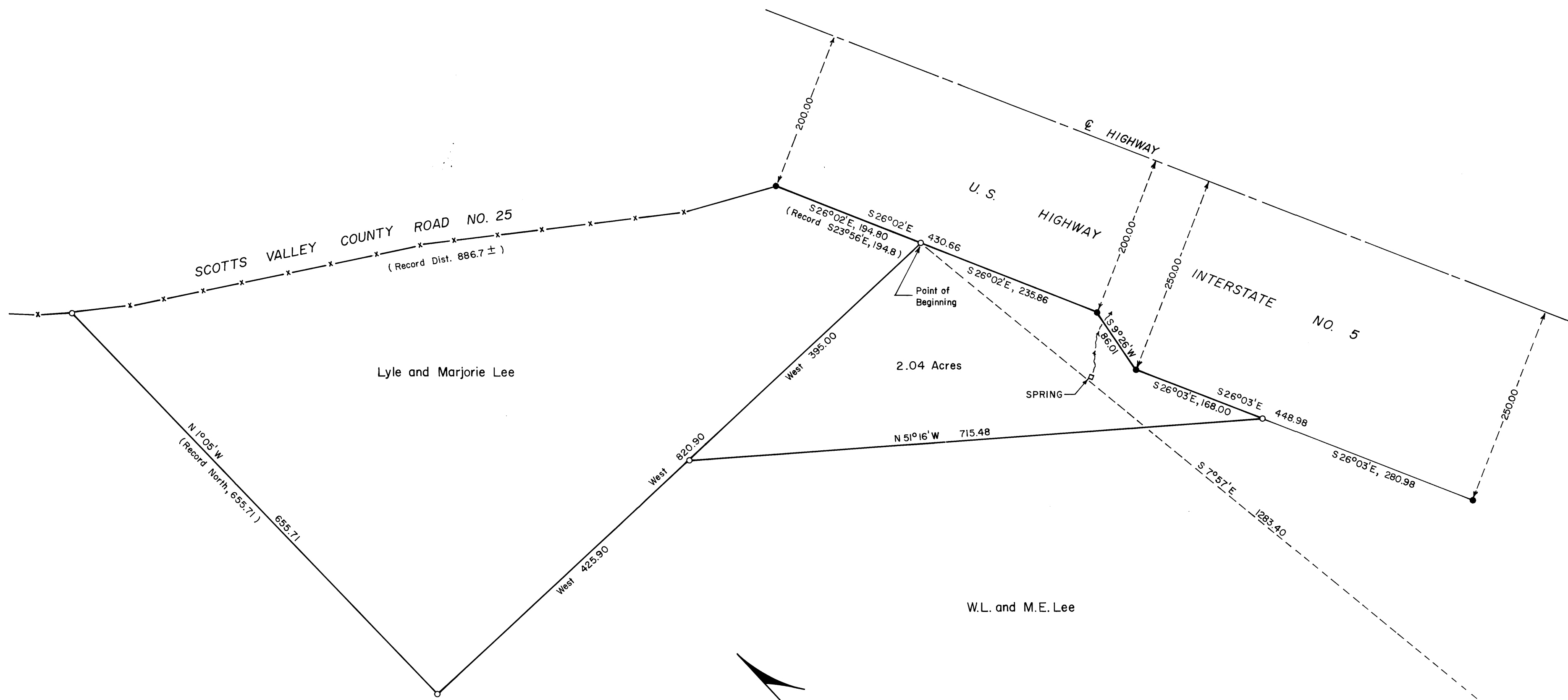


M 37 - 26



1/4 Section Corner Between Sections 30 and 31, T22S, R4W
 Found Brass Cap set by County Surveyor, from which a:
 36" D. Fir BT, scribes visible, bears S 63° E, 17.2 ft.
 43" D. Fir BT bears N 77° E, 58.7 ft.
 9" D. Fir BT, scribes visible, bears N 62° W, 7.6 ft.
 16" W. Fir BT, scribes visible, bears S 52° W, 16.2 ft.
 East and West fence is 4 ft. South of Corner
 Westerly boundary of Interstate 5 is approx. 400 ft. East

DO NOT REMOVE FROM OFFICE



SCALE: 1" = 100'

- LEGEND:
- Corner Found (5/8" Iron Rod)
 - Corner Set (5/8" Iron Rod)



LYLE LEE PROPERTY SURVEY
 FOR MT. BALDY LUMBER CO.
 In the SW 1/4 Sec. 30, T22S, R4W, W.M.
 Douglas County, Oregon
 Bruce A. Shaner, Engineer
 March 7, 1969

M 37 - 26