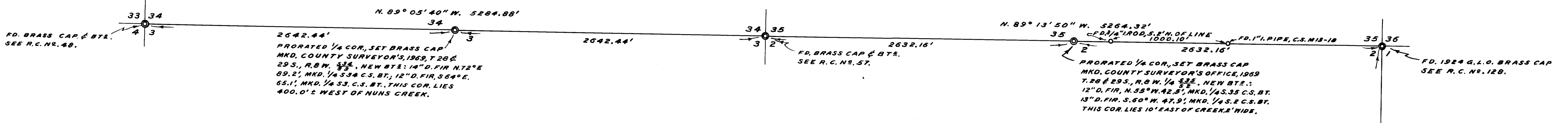
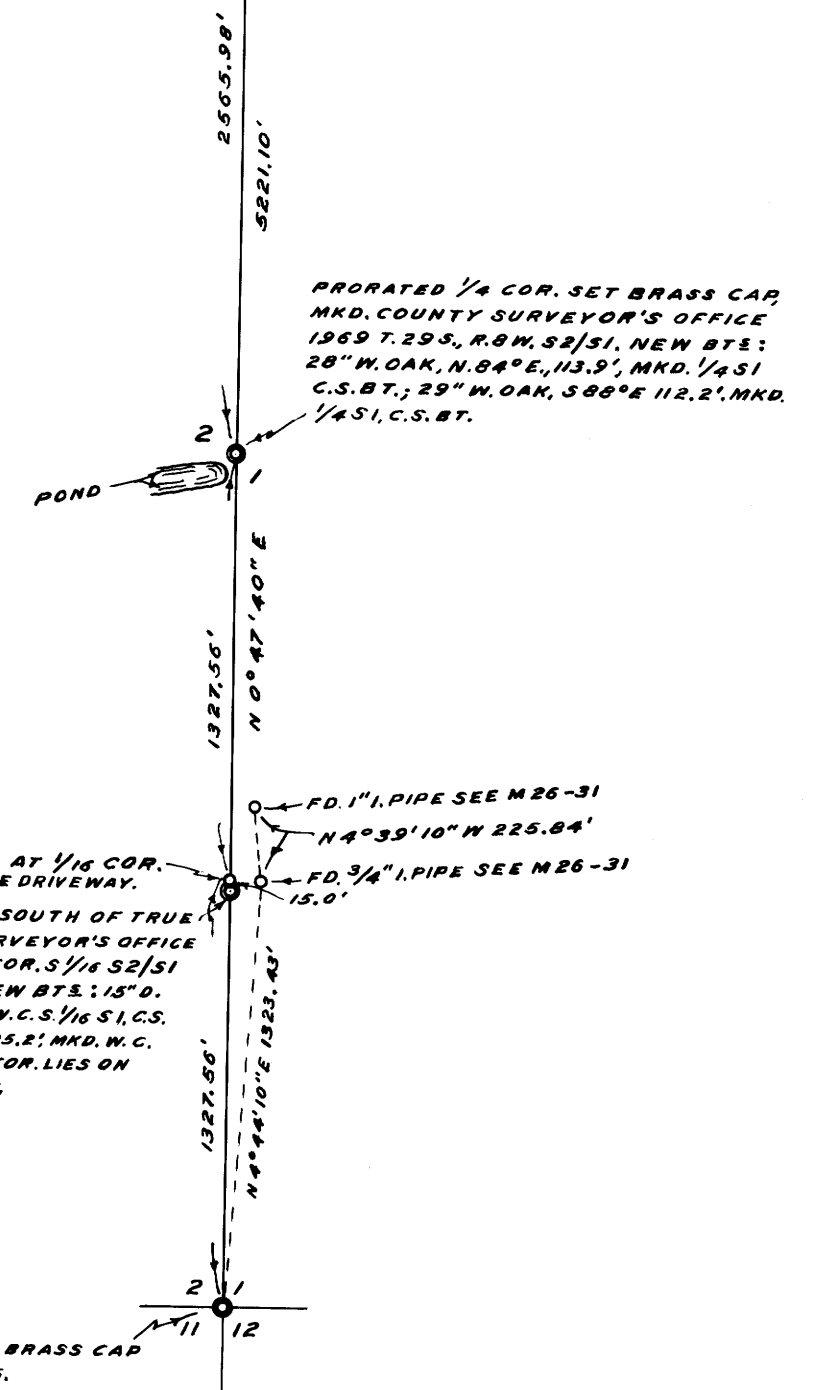


T. 28 S., R. 8 W.



T. 29 S., R. 8 W.

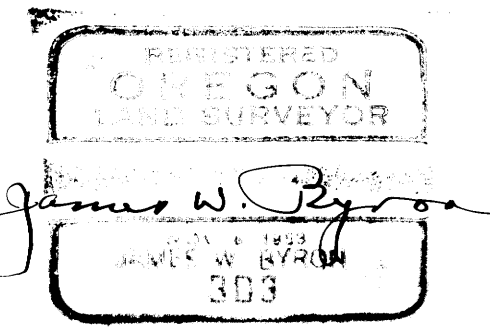


NOTE: BEARINGS ARE MAGNETIC, WITH A VAR. OF 20° 00'.

COUNTY SURVEYOR'S OFFICE
DOUGLAS COUNTY, OREGON

SURVEY TO SET SECTION CORNERS,
FOR T. 28 & 29 S., R. 8 W., W. M.

JAMES W. BYRON COUNTY SURVEYOR
SURVEYED JAN. 1969 SCALE 1" = 600'
SURVEYED FOR DOUGLAS CO.



DO NOT REMOVE FROM OFFICE