

PROPERTY SURVEY FILE DATA
DO NOT REMOVE FROM OFFICE


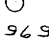
FILED
RECEIVED

MAR 3 1969

COUNTY SURVEYOR
DOUGLAS COUNTY, ORE.

SURVEY OF A PORTION OF GOVERNMENT LOT 1, SECTION 7,
T. 22 S., R. 12 W., W.M., DOUGLAS COUNTY, OREGON

for: NEIL SPENCER

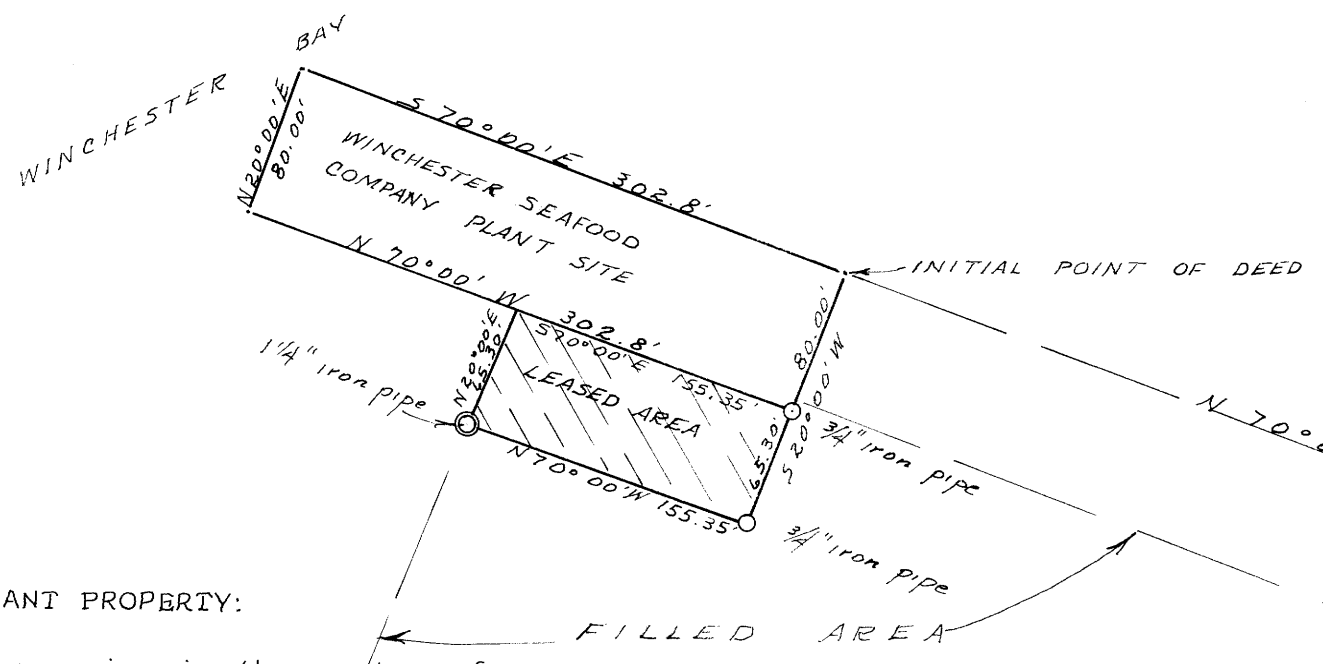
Scale: 1" = 100'
Corners found: 
Corners set: 
February 14, 1969

REGISTERED
OREGON
LAND SURVEYOR

Warren D. Hootman

MAY 10, 1957
WARREN D. HOOTMAN
300

North

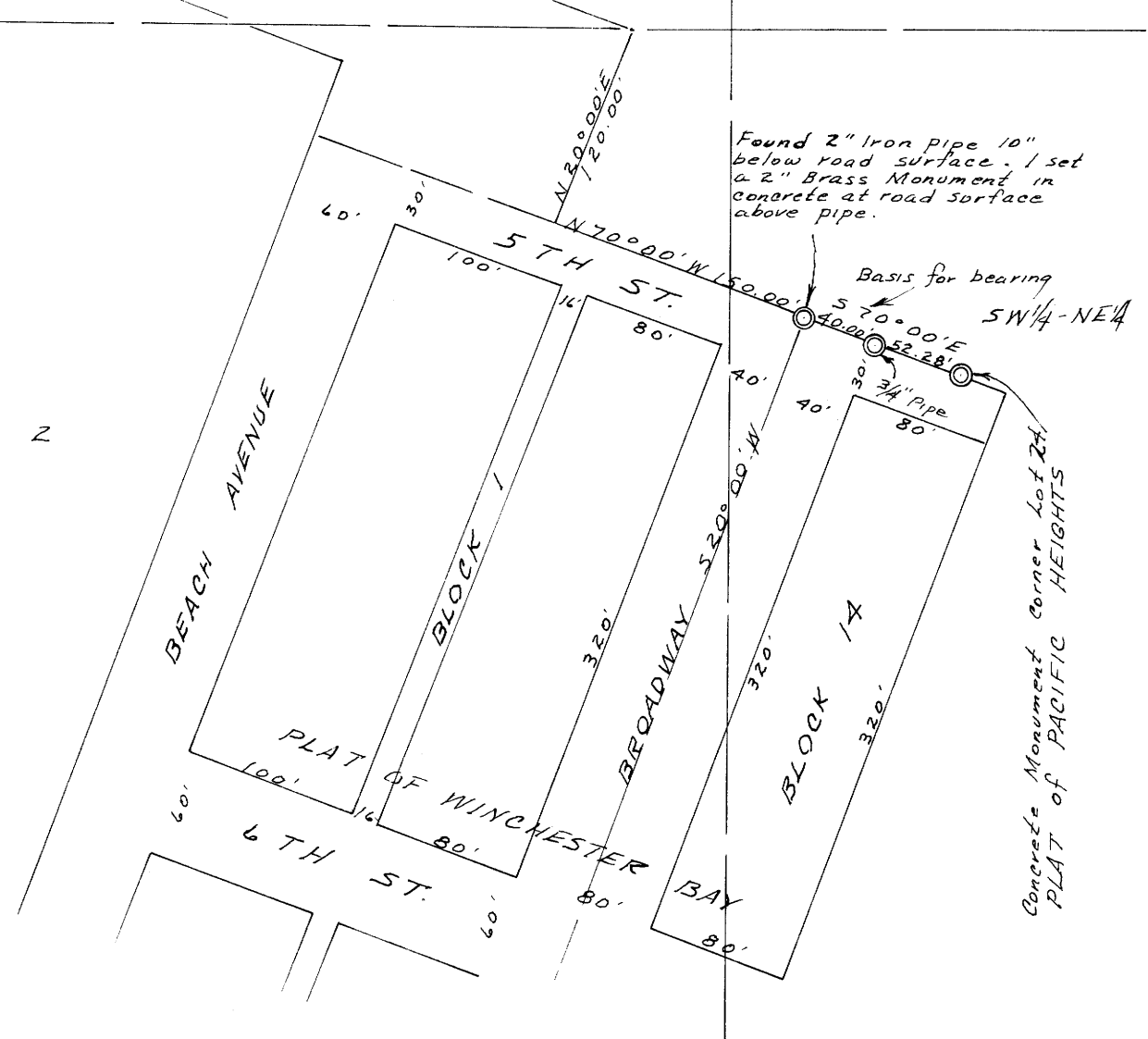


DESCRIPTION OF PLANT PROPERTY:

Beginning at an iron pipe in the center of
Broadway Avenue at the North edge of the
Townsite of Winchester Bay, Oregon;
thence N 70° W a distance of 150.0 ft. to an
iron rod;
thence N 20° E a distance of 120.0 ft;
thence N 70° W a distance of 700.6 ft. to
the true point of beginning;
thence S 20° W a distance of 80.0 ft;
thence N 70° W a distance of 302.8 ft;
thence N 20° E a distance of 80.0 ft;
thence S 70° E a distance of 302.8 ft. to the
place of beginning.

DESCRIPTION OF LEASE AREA:

Beginning at an iron pipe in the center of
Broadway Avenue at the North edge of the
Townsite of Winchester Bay, Oregon;
thence N 70° W a distance of 150.0 ft. to an
iron rod;
thence N 20° E a distance of 120.0 ft;
thence N 70° W a distance of 700.6 ft;
thence S 20° W a distance of 80.0 ft. to
the true point of beginning;
thence continuing S 20° W a distance of
65.30 ft;
thence N 70° W a distance of 155.35 ft;
thence N 20° E a distance of 65.30 ft;
thence S 70° E a distance of 155.35 ft.
to the place of beginning.



MAP FILE M 37 & 22

M 37 & 22