

COUNTY SURVEYORS FILE DATA
DO NOT REMOVE FROM OFFICE

SURVEY FOR DEED DESCRIPTION
IN SECTIONS 16 & 21, T25S, R7W, W.M.
DOUGLAS COUNTY, ORE.

SURVEYED FOR - E.H. BRANTON
SURVEYED BY - W.S. BARNES

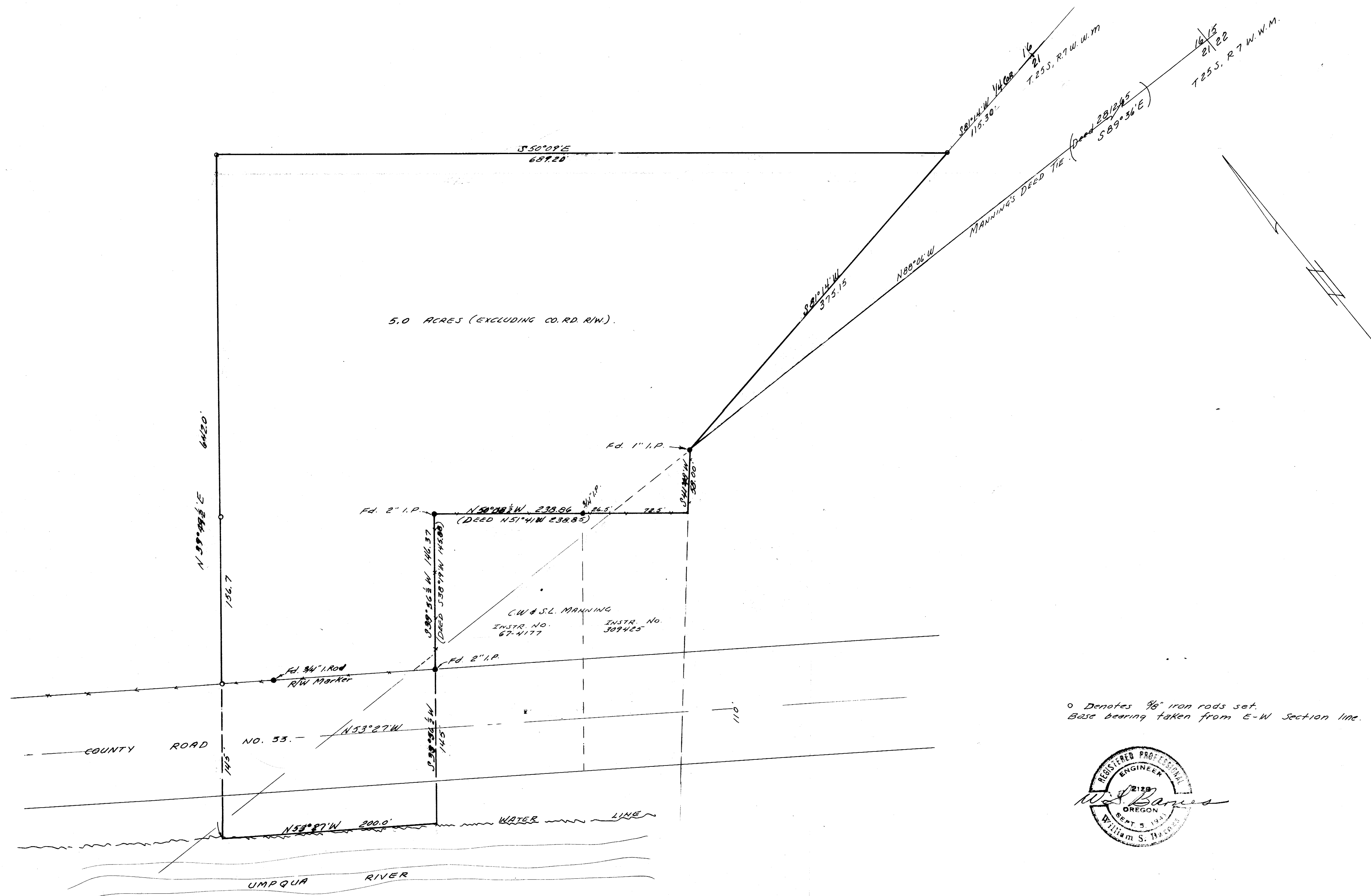
FEB. 1969
SCALE - 1" = 60'

FILED
RECEIVED

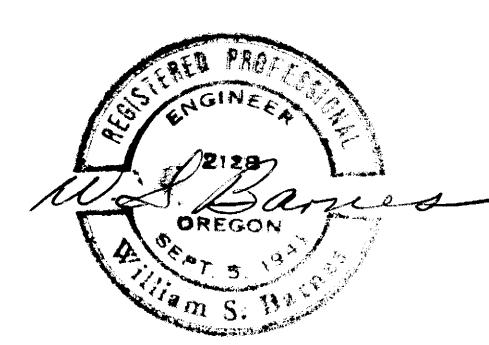
FEB 24 1969

COUNTY SURVEYOR
DOUGLAS COUNTY, ORE.

M.P. FILE M.37 F.19



o Denotes 3/8" iron rods set.
Base bearing taken from E-W section line.



MAP FILE M.37 F.19