

COUNTY SURVEYORS FILE DATA  
DO NOT REMOVE FROM OFFICE

FILED  
RECEIVED

FEB 19 1969

COUNTY SURVEYOR  
DOUGLAS COUNTY, ORE.

# SURVEY OF SECTION 11, T.27 S., R.2 W., W.M.

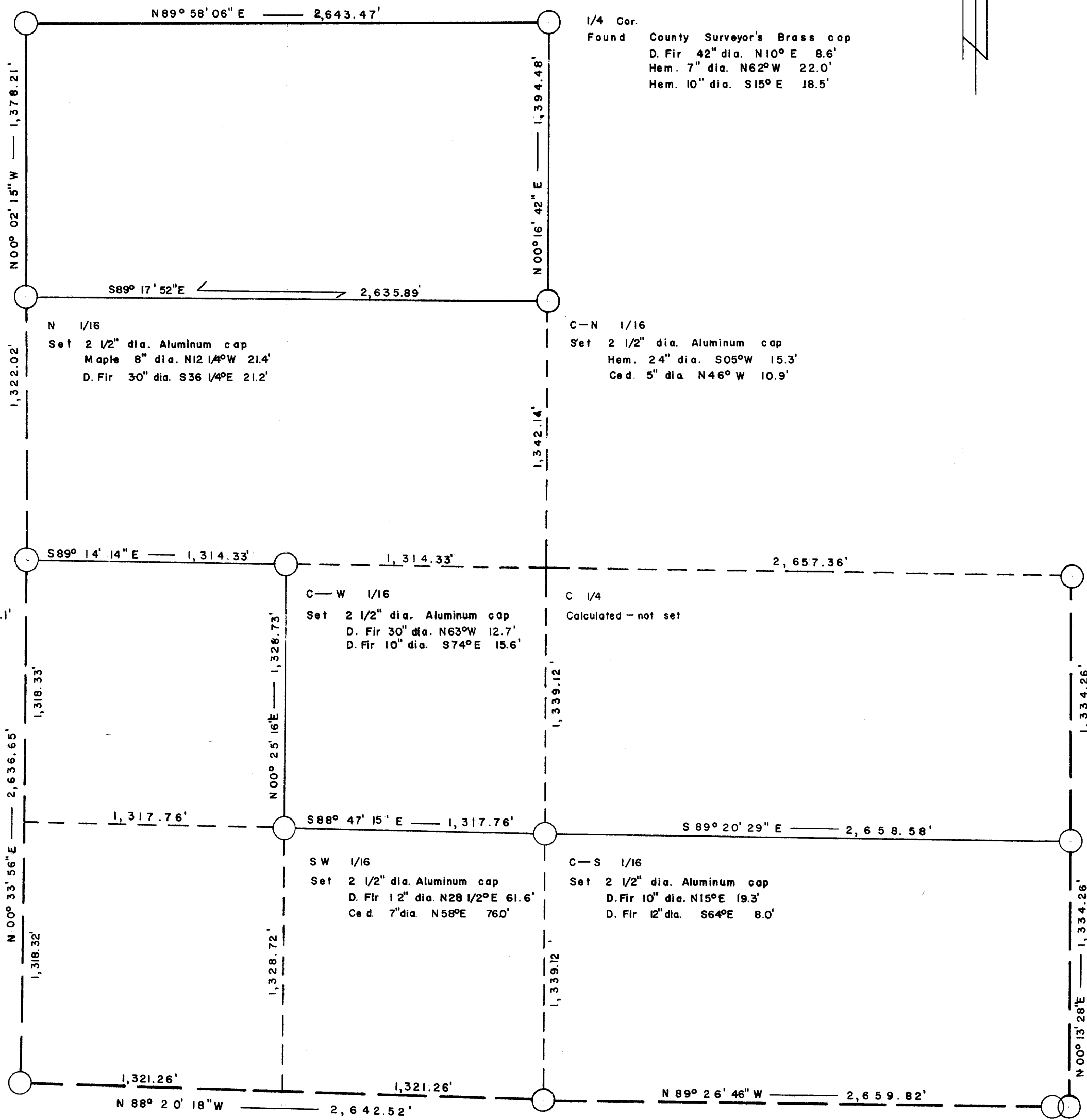
SURVEYED FOR U.S. PLYWOOD CORP.  
SURVEYED BY T.E. SHRUM, JR.

DECEMBER, 1968  
SCALE 1" = 500'

*Thomas E. Shrum, Jr.*

Sec. Cor. S 2, 3, 10, & 11  
Found G.L.O. Brass cap  
D. Fir 6" dia. N60°E 57.4'  
Ced. 5" dia. S28 1/2°E 19.8'  
D. Fir 8" dia. N57 1/2°W 21.8'  
Ced. 24" dia. N59°W 49.5'  
Pine snag 5" dia. S27°W 18.5'  
Hem. 9" dia. S22°W 29.7'

1/4 Cor.  
Found County Surveyor's Brass cap  
D. Fir 42" dia. N10°E 8.6'  
Hem. 7" dia. N62°W 22.0'  
Hem. 10" dia. S15°E 18.5'



1/4 Cor.  
Found D. Fir snag 30" dia. N13 1/2°W 12.1'  
Set 2 1/2" dia. Aluminum cap  
Hem. 7" dia. N31 1/2°W 27.3'  
W. Fir 7" dia. S50°E 38.6'

C-W 1/16  
Set 2 1/2" dia. Aluminum cap  
D. Fir 30" dia. N63°W 12.7'  
D. Fir 10" dia. S74°E 15.6'

C 1/4  
Calculated - not set

1/4 Cor.  
Found Original stone  
D. Fir 10" dia. S72°E 34.3'  
Set 2 1/2" dia. Aluminum cap  
Hem. 8" dia. S30°W 26.3'

Sec. Cor. S 10, 11, 14, & 15  
Found Original stone  
D. Fir 9" dia. S40°E 35.0'  
D. Fir 15" dia. S28°W 33.0'

Set 2 1/2" dia. Aluminum cap  
D. Fir 9" dia. N19°W 34.1'  
Madrone 6" dia. N26°E 24.6'

S 1/4 Sec. 11 only  
Found 2 1/2" dia. C.S. Brass cap  
W. Fir 36" dia. S23°E 17.2' (stump)  
Cedar 10" dia. S44°E 51.0'  
Cedar 10" dia. S50°W 53.2'

Sec. Cor. S 11 & 12  
Found County Surveyor's Brass Cap  
W. Fir stump 16" dia. N23°W 27.1'  
W. Fir stump 14" dia. N28°E 46.9'  
Hem. 38" dia. S35°W 24.4'  
D. Fir stump 52" dia. N57 1/2°W 38.0'  
D. Fir 58" dia. N26°E 113.7'

*Remains of N 22-24*