

COUNTY SURVEYORS FILE DATA
DO NOT REMOVE FROM OFFICE

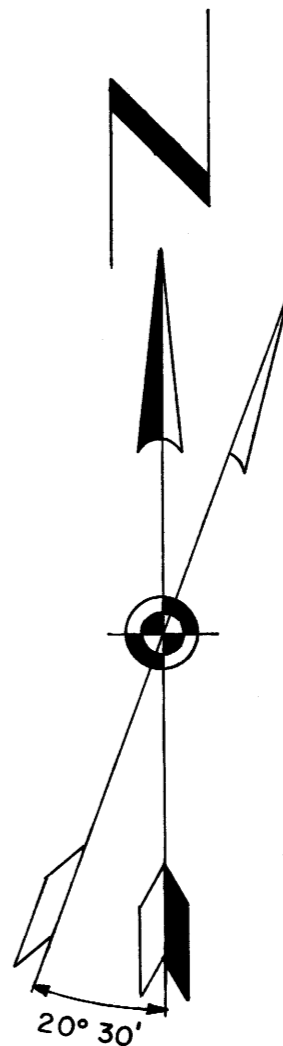
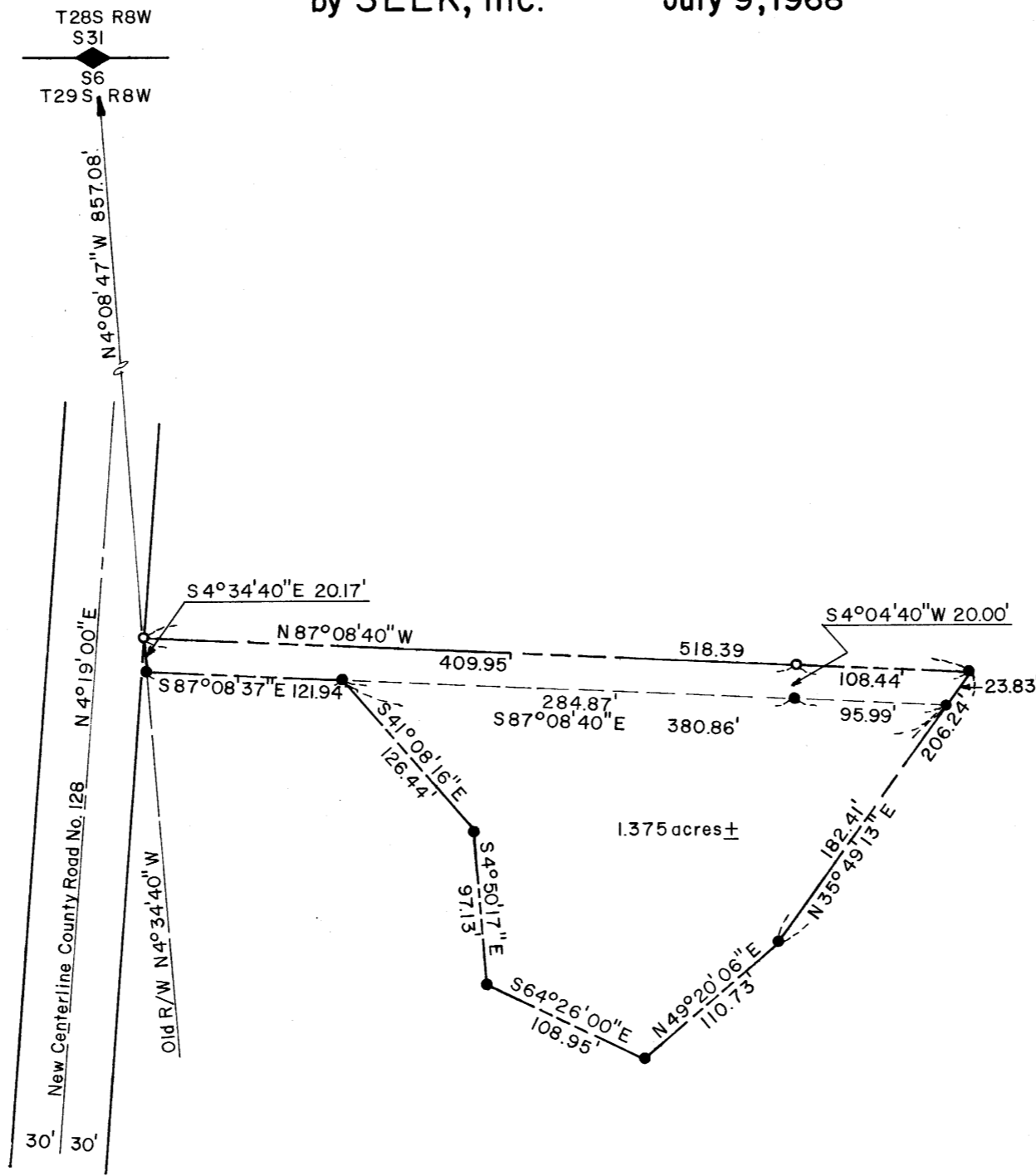
Survey for Frank Kinnan
Located in Section 6, T29S, R8W, W. M.
Douglas County, Oregon

by SEEK, Inc. July 9, 1968

FILED
RECEIVED

JUL 9 1968

COUNTY SURVEYOR
DOUGLAS COUNTY, ORE.



Scale: 1" = 100'

- 5/8" iron bar found
- 5/8" iron bar set

Bearings from a survey by B. Rogers
Douglas County Surveyor's File M 35-32

REGISTERED
OREGON
LAND SURVEYOR
William C. Stiles
OCT. 4, 1957
WILLIAM C. STILES
432

MAP FILE M 36-1-9