

**SURVEY IN BLOCK 38, CITY OF ROSEBURG, OREGON**  
 Surveyed For The 1st. National Bank Of Oregon By Don E. Garrett  
 December 1968

Bearings are based on the Centerline of Jackson Street. M36-64

**COUNTY SURVEYORS FILE DATA**  
 DO NOT REMOVE FROM OFFICE

Scale 1" = 20'

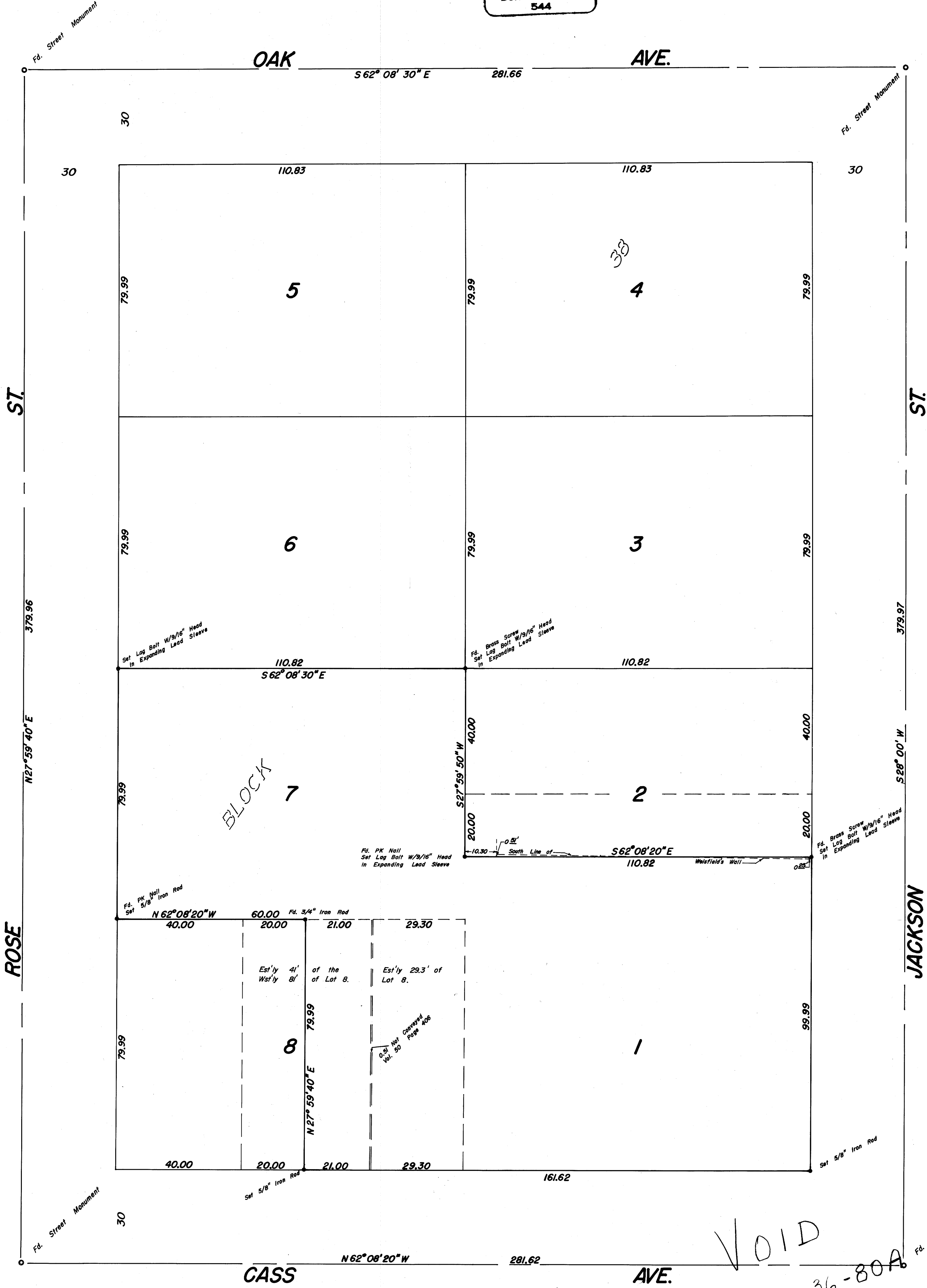
FILED  
 RECEIVED

JAN 31 1969

COUNTY SURVEYOR  
 DEUCALIA COUNTY, ORE.

VOID SEE M 36-80A

REGISTERED  
 OREGON  
 LAND SURVEYOR  
 Don E. Garrett  
 JULY 14, 1961  
 DON E. GARRETT  
 544



VOID

SEE M 36-80A