

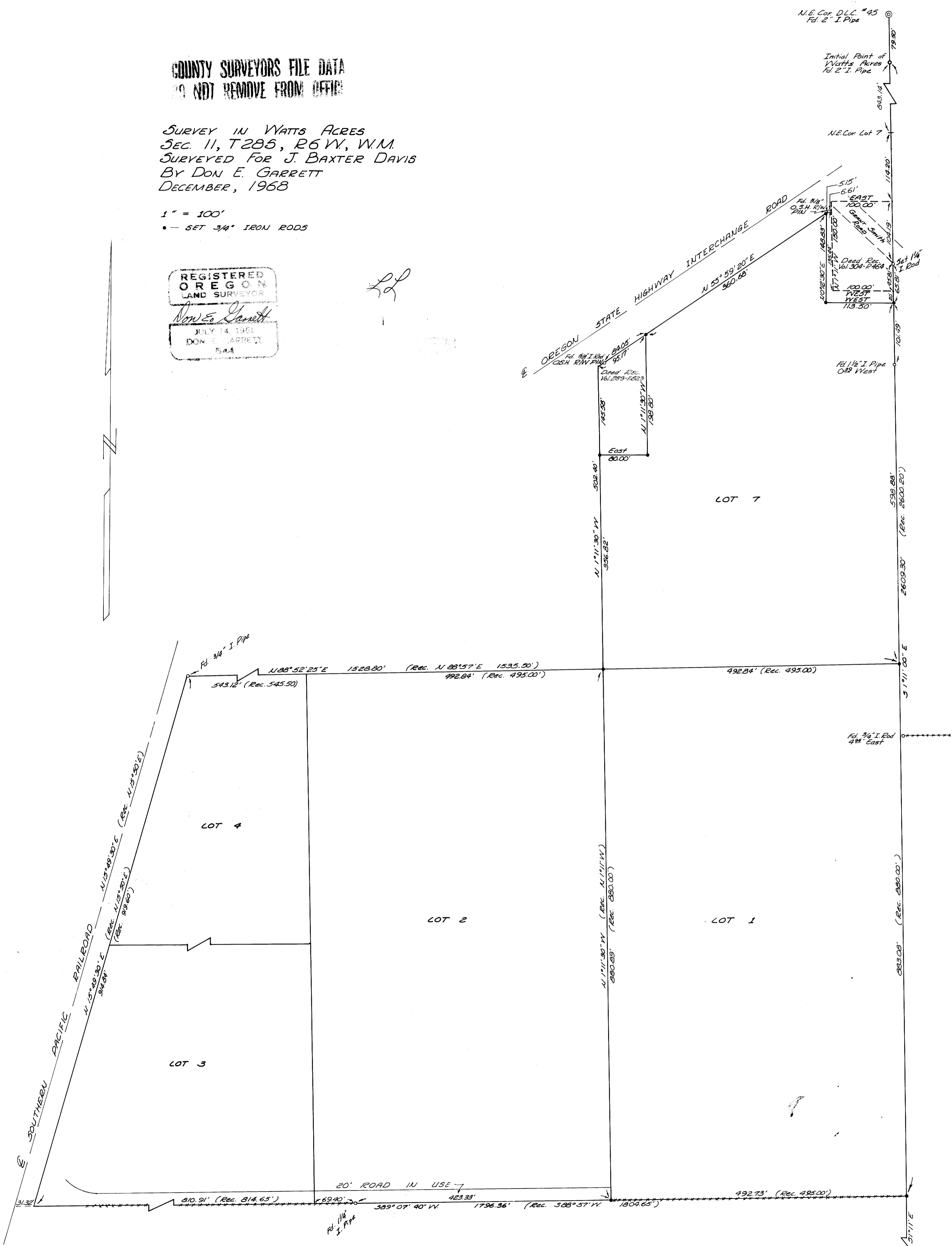
COUNTY SURVEYORS FILE DATA
DO NOT REMOVE FROM OFFICE

SURVEY IN WATTS ACRES
SEC. 11, T28S, R6W, W.M.
SURVEYED FOR J. BAXTER DAVIS
BY DON E. GARRETT
DECEMBER, 1968

1" = 100'
• - SET 3/4" IRON RODS

REGISTERED
OREGON
LAND SURVEYOR
Don E. Garrett
JULY 14, 1961
DON E. GARRETT
544

LD



N.E. Cor. D.L.C. #45
Fd. 2" I. Pipe

Initial Point of
Watts Acres
Fd. 2" I. Pipe

N.E. Cor. Lot 7

5.15'
6.61'
EAST
100.00'
SOUTH
100.00'
WEST
113.50'

Deed Rec.
Vol. 304-P-464
1777

100.00'
WEST
113.50'

101.49'

101.49'

Fd. 1/2" I. Pipe
0.25 West

101.49'

101.49'

101.49'

538.88'
(Rec. 2600.20')

2609.30'

538.88'

538.88'

538.88'

538.88'

538.88'

538.88'

538.88'

538.88'

538.88'

538.88'

538.88'

538.88'

538.88'

538.88'

538.88'

538.88'

538.88'

538.88'

538.88'

538.88'

538.88'

538.88'

538.88'

538.88'

538.88'

538.88'

Fd. Brass Cap
Marked
S.W. Cor. D.L.C. #23
T28S, R6W