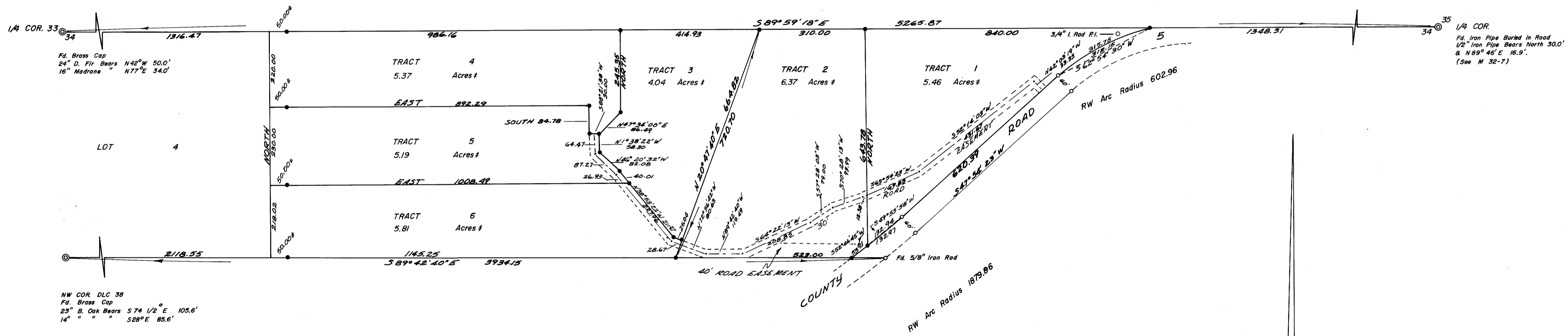


SURVEY IN SECTION 34, TWP. 27 SOUTH, RNG. 7 WEST, W.M.
 Surveyed for Victor Jasper by Don E. Garrett
 December 1968

Scale 1" = 200'

● - Set 5/8" Iron Rod
 ○ - Fd. 3/4" Iron Rod
 Bearings are True, Based on a "P" Line Survey of Road 5 by the Douglas County Engineer.



REGISTERED
 OREGON
 LAND SURVEYOR
 Don E. Garrett
 JULY 14, 1961
 DON E. GARRETT
 341

M 36 + 71

M 36 + 71