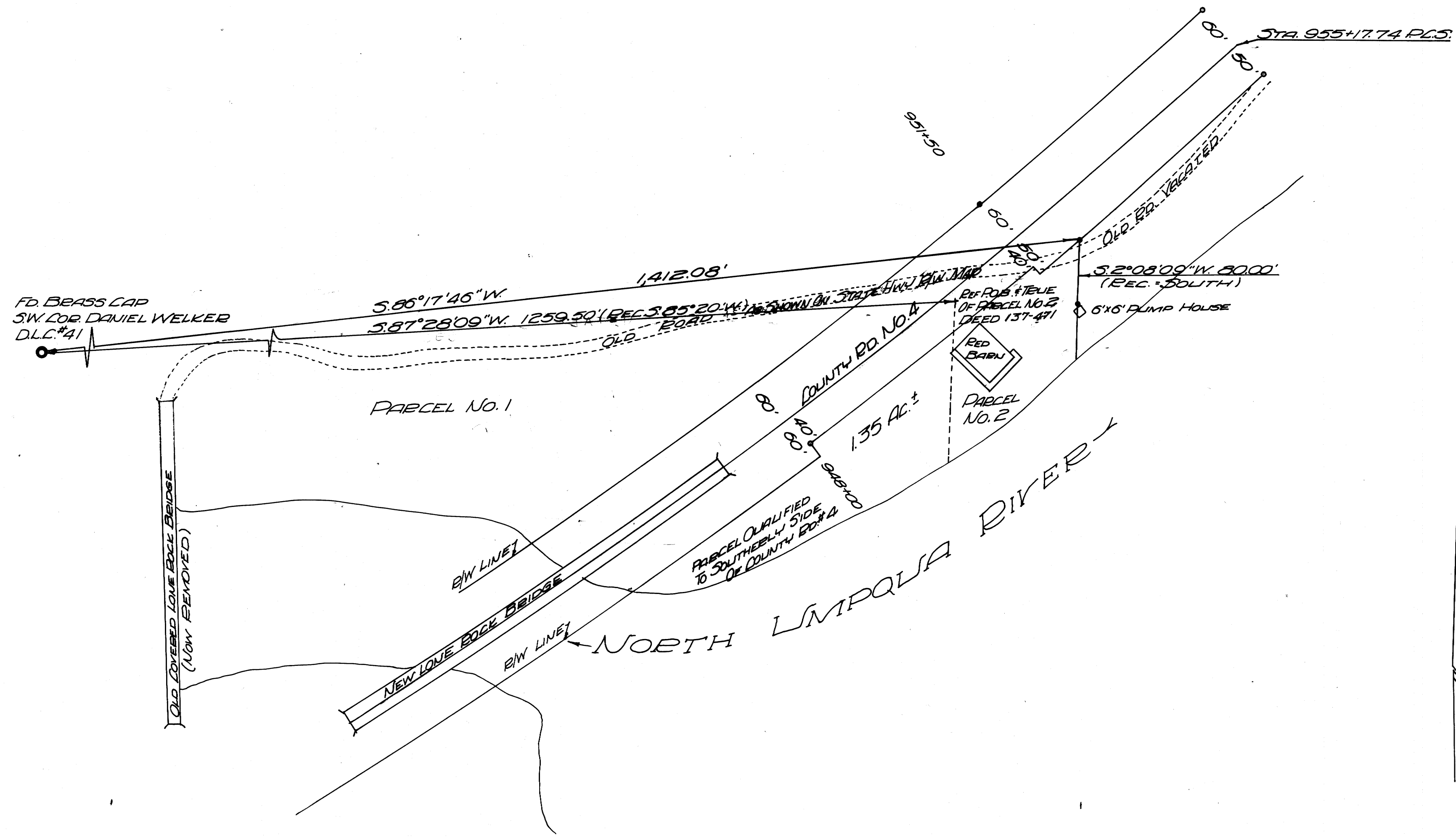


RECEIVED  
 NOV 26 1968  
 COUNTY SURVEYOR  
 DOUGLAS COUNTY, ORE.



LEGEND:  
 ● SET 5/8" IRON ROD  
 ○ FOUND 3/4" IRON ROD R/W PIN  
 ○ FOUND BRASS CAP

REGISTERED  
 OREGON  
 LAND SURVEYOR  
 JULY 14, 1961  
 GLENN S. BAUGHMAN  
 536

COUNTY SURVEYORS FILE DATA  
 DO NOT REMOVE FROM OFFICE

**SURVEYED TO ESTABLISH PROPERTY LINE**  
 LOCATED IN SEC. 17, T. 26S, R. 3W.W.M.  
 FOR DOUGLAS COUNTY TITLE CO.  
 BY BAUGHMAN & ACKERET INC.  
 SCALE 1"=100  
 Nov. 1968

MAP FILE M. 36. 7. 67

MAP FILE M. 36. 7. 67