

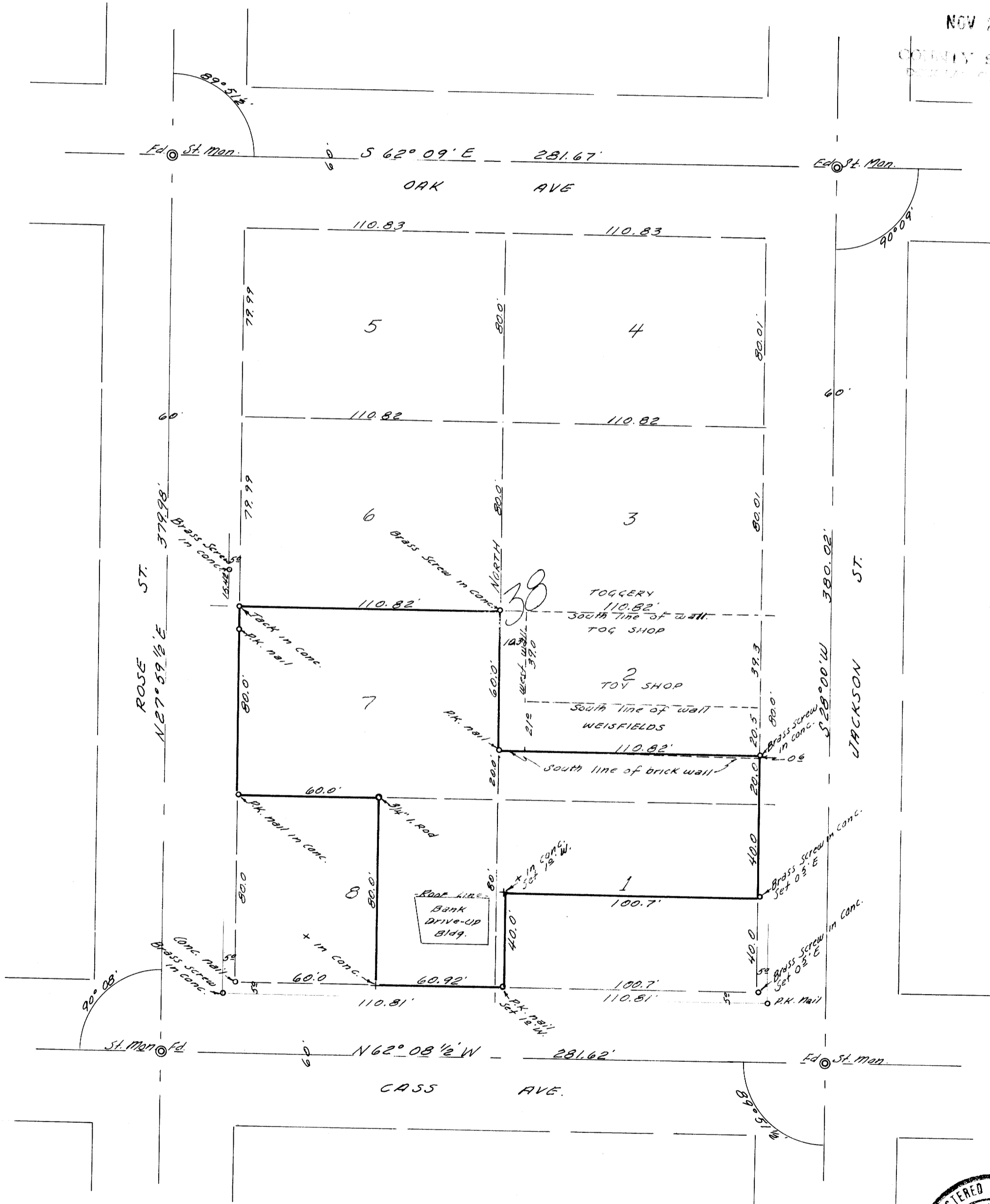
COUNTY SURVEYORS FILE MAP  
DO NOT REMOVE FROM OFFICE

SURVEY IN BLOCK 38, CITY OF ROSEBURG SUB.  
DOUGLAS COUNTY, ORE.

SURVEYED FOR - CRAIG E. MARSTERS  
ENGINEER - W. S. BARNES

NOV. 1968  
SCALE 1" = 40'

NOV 2 1968  
COUNTY SURVEYOR  
DOUGLAS COUNTY, ORE.



o Denotes monuments set.  
Base bearing taken from Jackson St.  
Note: This map is in error in that Jackson St. has a record width of 60.5 ft. instead of 60.0 ft. as shown; therefore the westerly line of Jackson St., as shown, is 0.25 ft. too far east and all lots, as shown are 0.125 ft. too long, east and west.  
W.S. Barnes

