

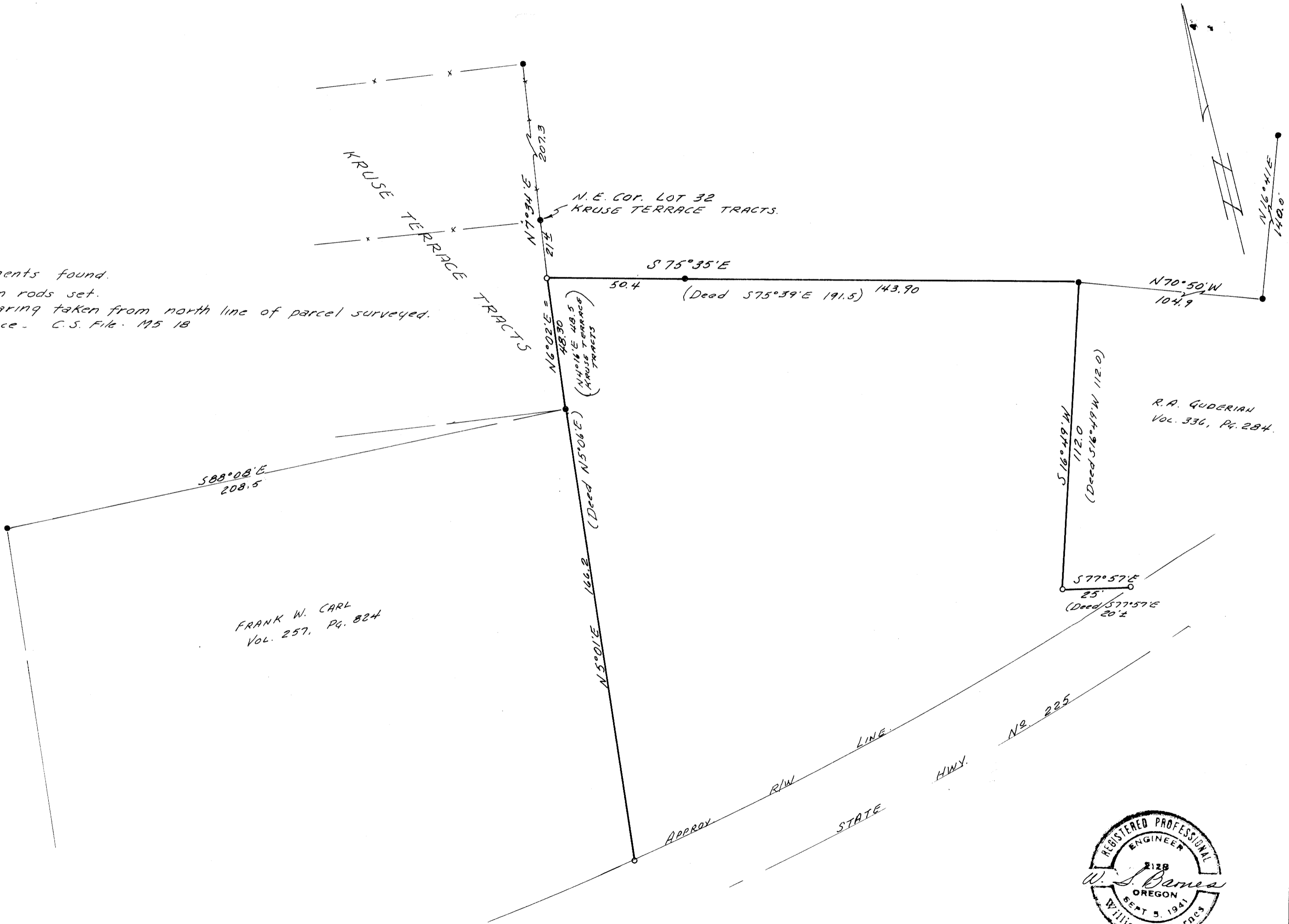
COUNTY SURVEYORS FILE DATA
DO NOT REMOVE FROM OFFICE

SURVEY TO ESTABLISH PROPERTY CORNERS
IN SEC. 19, T 25 S, R 5 W. W.M.
DOUGLAS COUNTY, ORE.

SURVEYED FOR - VERN LEISENGER
SURVEYED BY - W. S. BARNES

NOV. 1968
SCALE 1" = 30'

FILED
RECEIVED
NOV 18 1968
COUNTY SURVEYOR
DOUGLAS COUNTY, OREGON



FILED M 36 + 62

M 36 + 62