

COUNTY SURVEYORS FILE DATA
DO NOT REMOVE FROM OFFICE

Handwritten initials

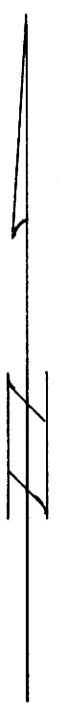
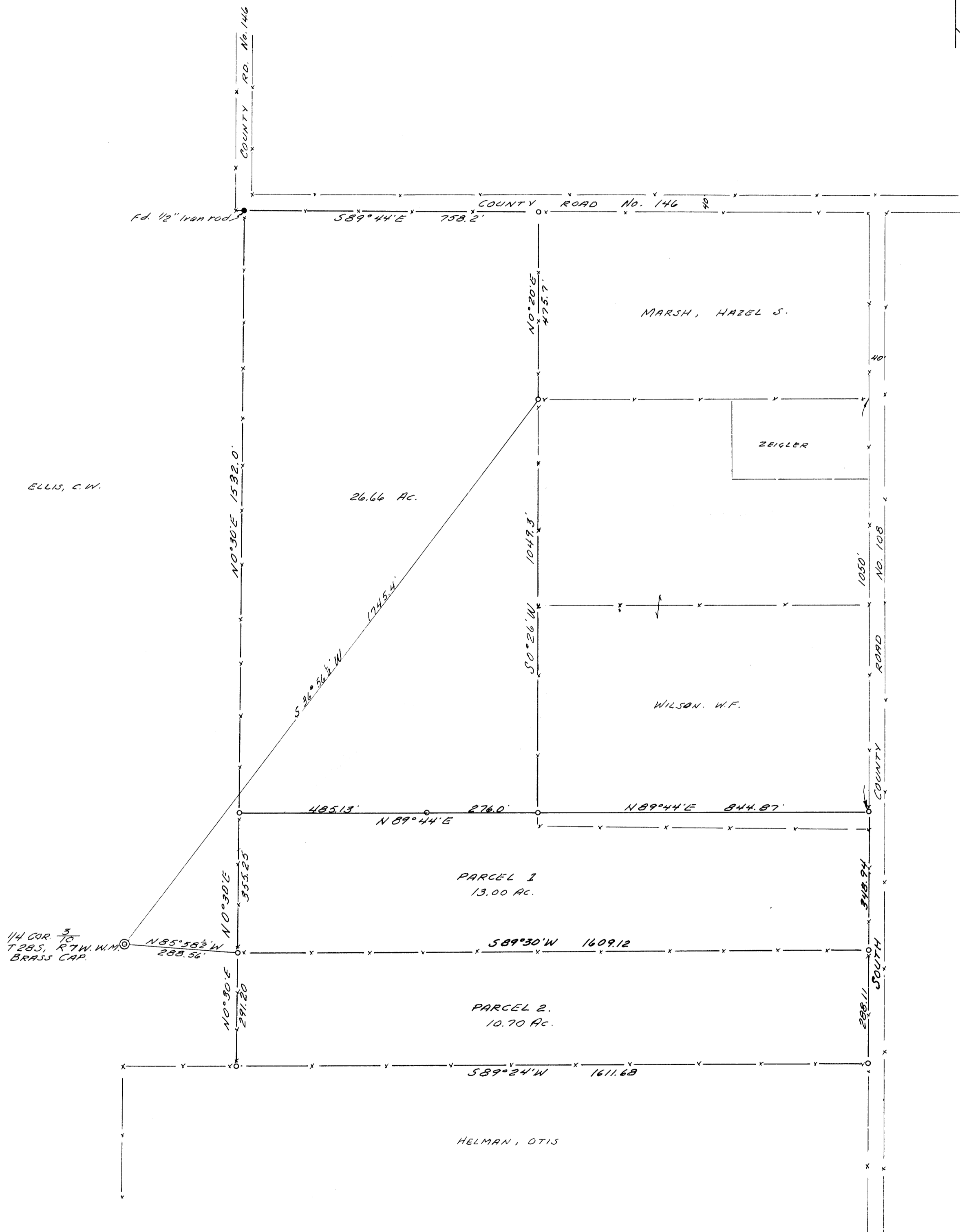
OCT 24 1968

COUNTY SURVEYOR
DOUGLAS COUNTY, ORE.

SURVEY FOR DEED DESCRIPTION
IN SEC. 3, T28S, R7W, W.M.
& SEC. 10,
DOUGLAS COUNTY, ORE.

SURVEYED FOR - ORVILLE CORNETT
SURVEYED BY - W.S. BARNES

OCT. 1968
SCALE 1"=200'



- Denotes Mon.s found.
- " " 5/8" iron rods set.
- Base bearing taken from R/W line of County Road No. 108.

