

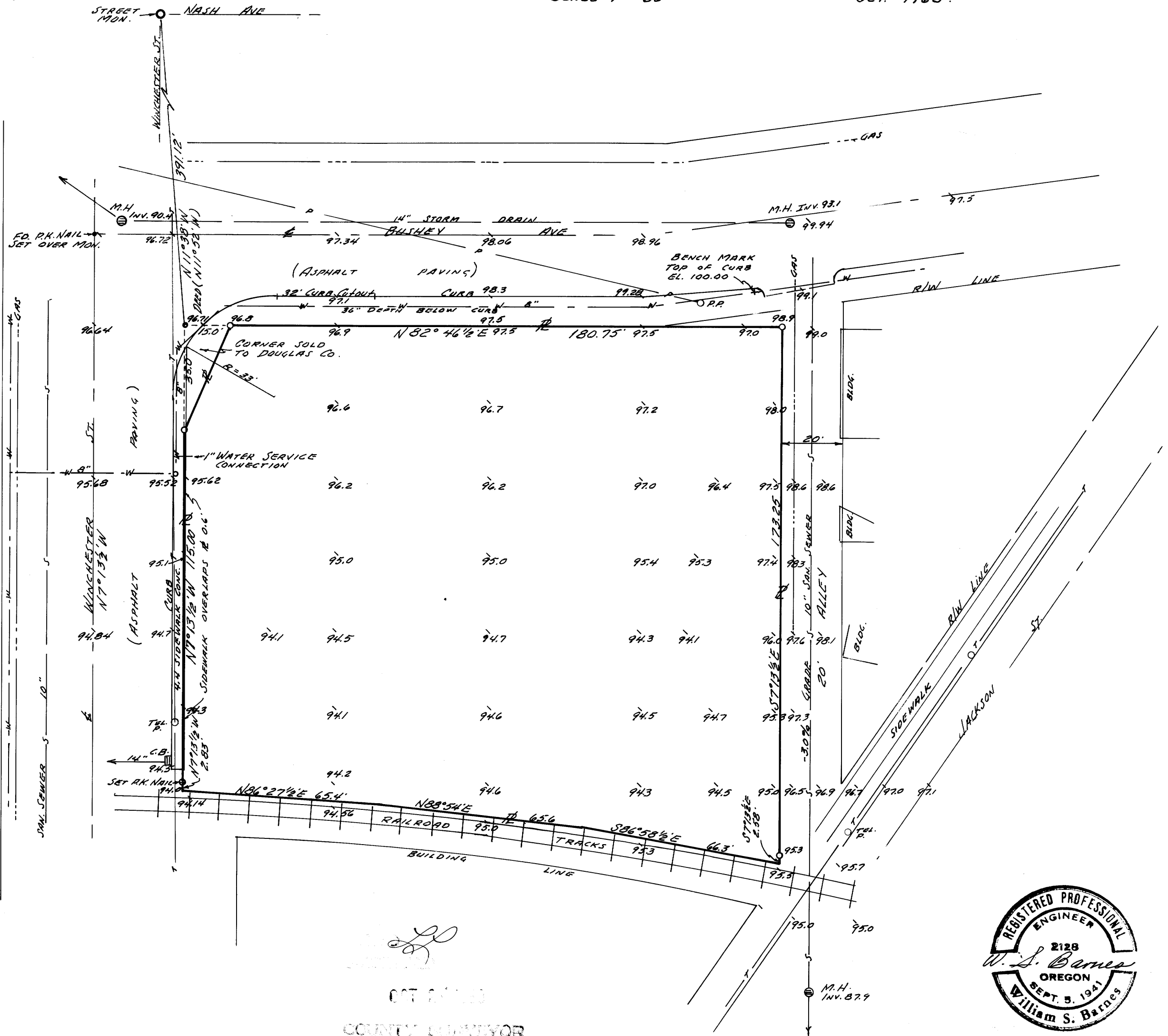
SURVEY FOR PROPERTY CORNERS AND TOPOG.
 IN SEC. 18, TWP. 27 S, RQ. 5 W. W.M., ROSEBURG, ORE.
 NEWS REVIEW BLDG. SITE.

COUNTY SURVEYORS FILE DATA
 DO NOT REMOVE FROM OFFICE

SURVEYED FOR - NEWS REVIEW
 ENGINEER - W.S. BARNES

SCALE 1" = 30'

OCT. 1968.



○ DENOTES 5/8" IRON RODS SET.
 BASE BEARING - E WINCHESTER ST. - N 7° 13 1/2' W.

[Signature]
 COUNTY SURVEYOR
 ROSEBURG, ORE.



MAP FILE M 36 54

MAP FILE M 36 54