

COUNTY SURVEYORS FILE DATA
DO NOT REMOVE FROM OFFICE

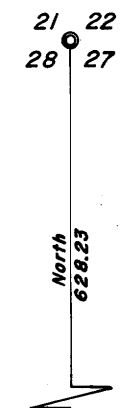
SURVEY IN SECT. 27, TWP. 27 SOUTH, RNG. 6 WEST, W.M.
Surveyed for S&S Builders Inc. by Don E. Garrett
October 1968
Scale 1" = 50'

o - Set 5/8" Iron Rod

RECEIVED
OCT 22 1968
COUNTY SURVEYOR
DOUGLAS COUNTY, ORE.

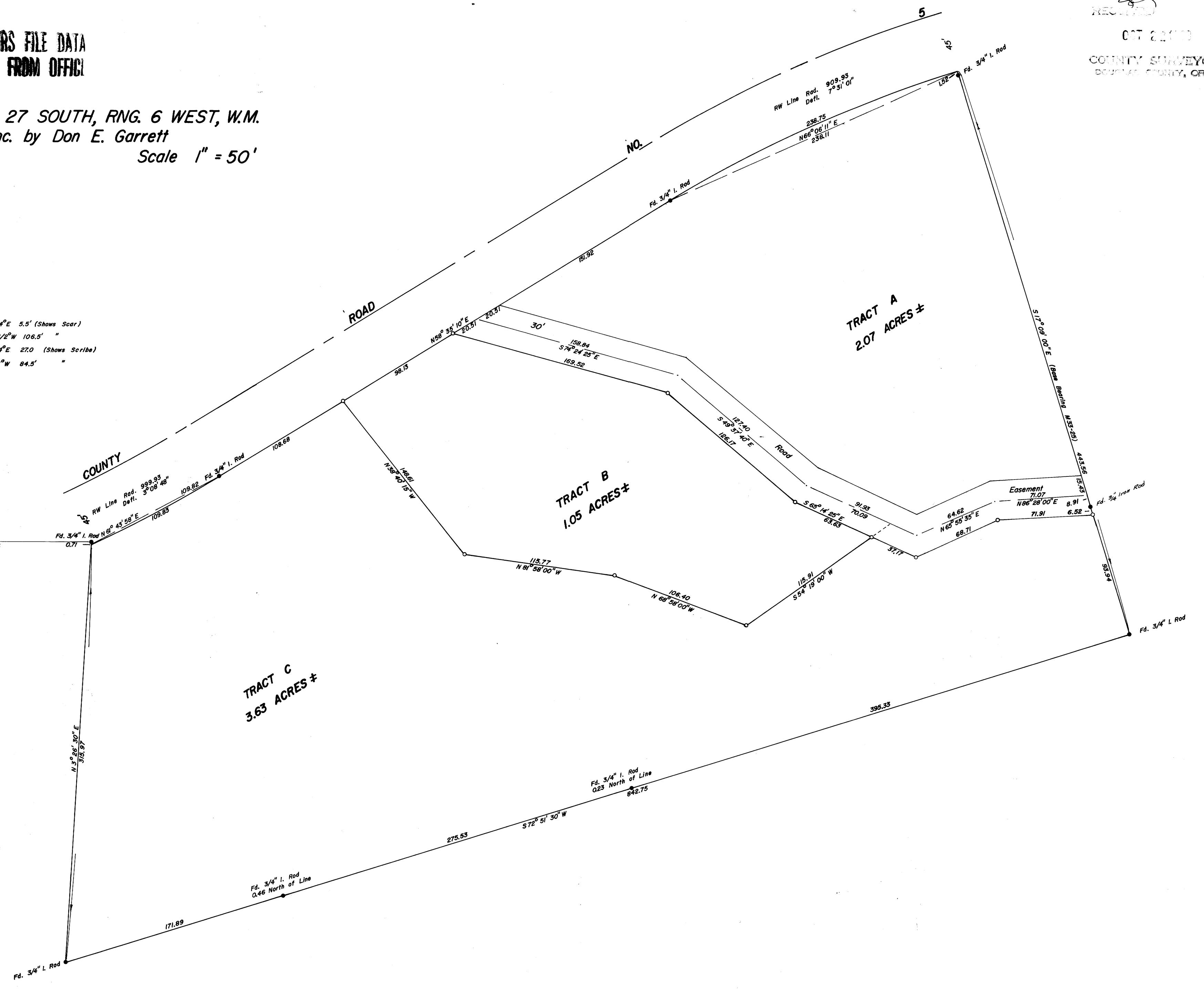
MAP FILE M 36-7-53

- Fd. 2" I. Pipe
- 10" W. Oak Bears N54°E 5.5' (Shows Scar)
- 15" W. Oak " N62 1/2°W 106.5' "
- 14" Madrone " S64°E 27.0 (Shows Scribe)
- 21" B. Oak " S17°W 84.5' "



West 983.24

REGISTERED
OREGON
LAND SURVEYOR
Don E. Garrett
JULY 14, 1961
DON E. GARRETT
544



M 36-7-53