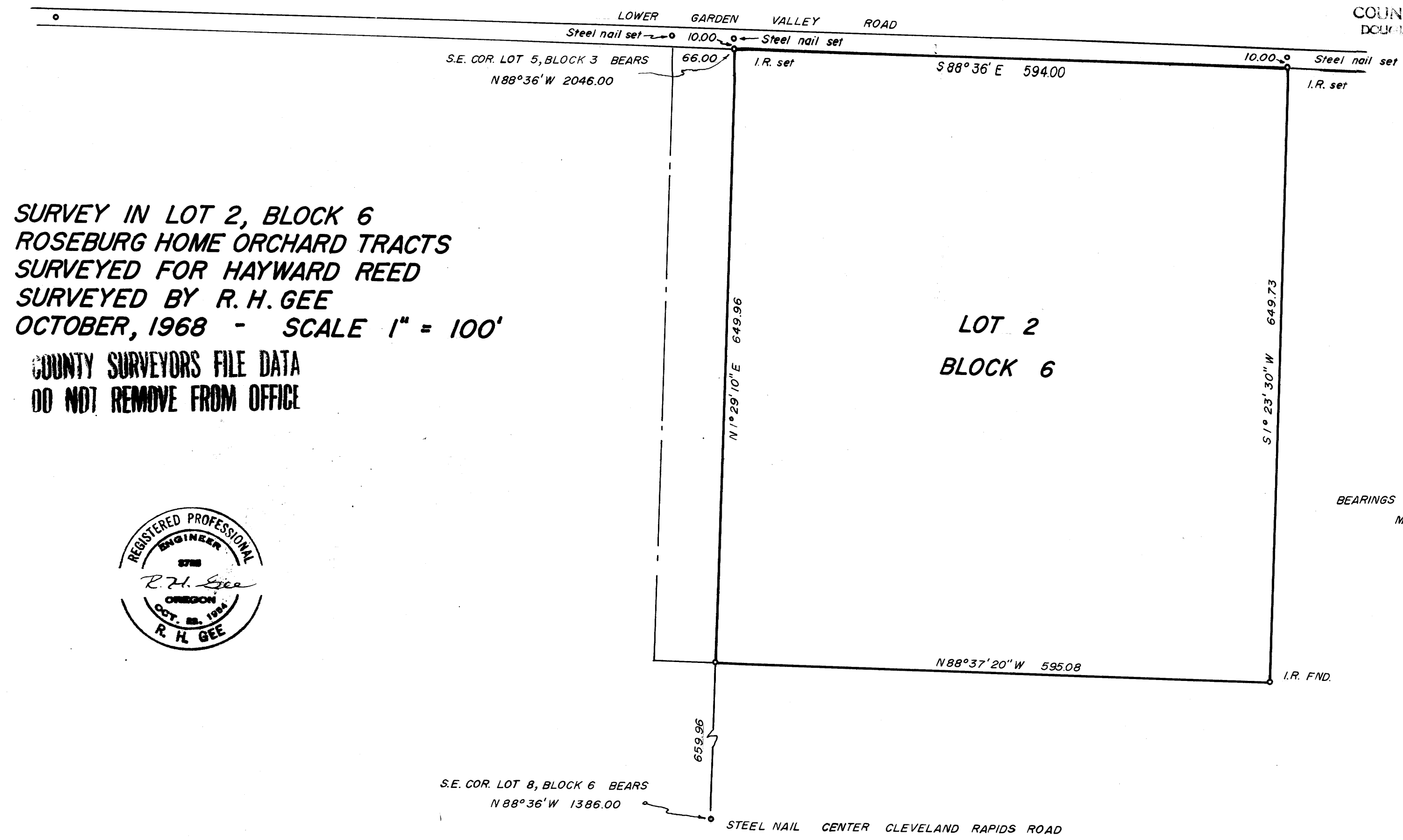


FILED
RECEIVED

OCT 17 1968

COUNTY SURVEYOR
DOUGLAS COUNTY, ORE.



SURVEY IN LOT 2, BLOCK 6
 ROSEBURG HOME ORCHARD TRACTS
 SURVEYED FOR HAYWARD REED
 SURVEYED BY R. H. GEE
 OCTOBER, 1968 - SCALE 1" = 100'

COUNTY SURVEYORS FILE DATA
 DO NOT REMOVE FROM OFFICE



BEARINGS BASED ON C.S. MAP
 M 21 - 60

M.D. FILE M 367-52