

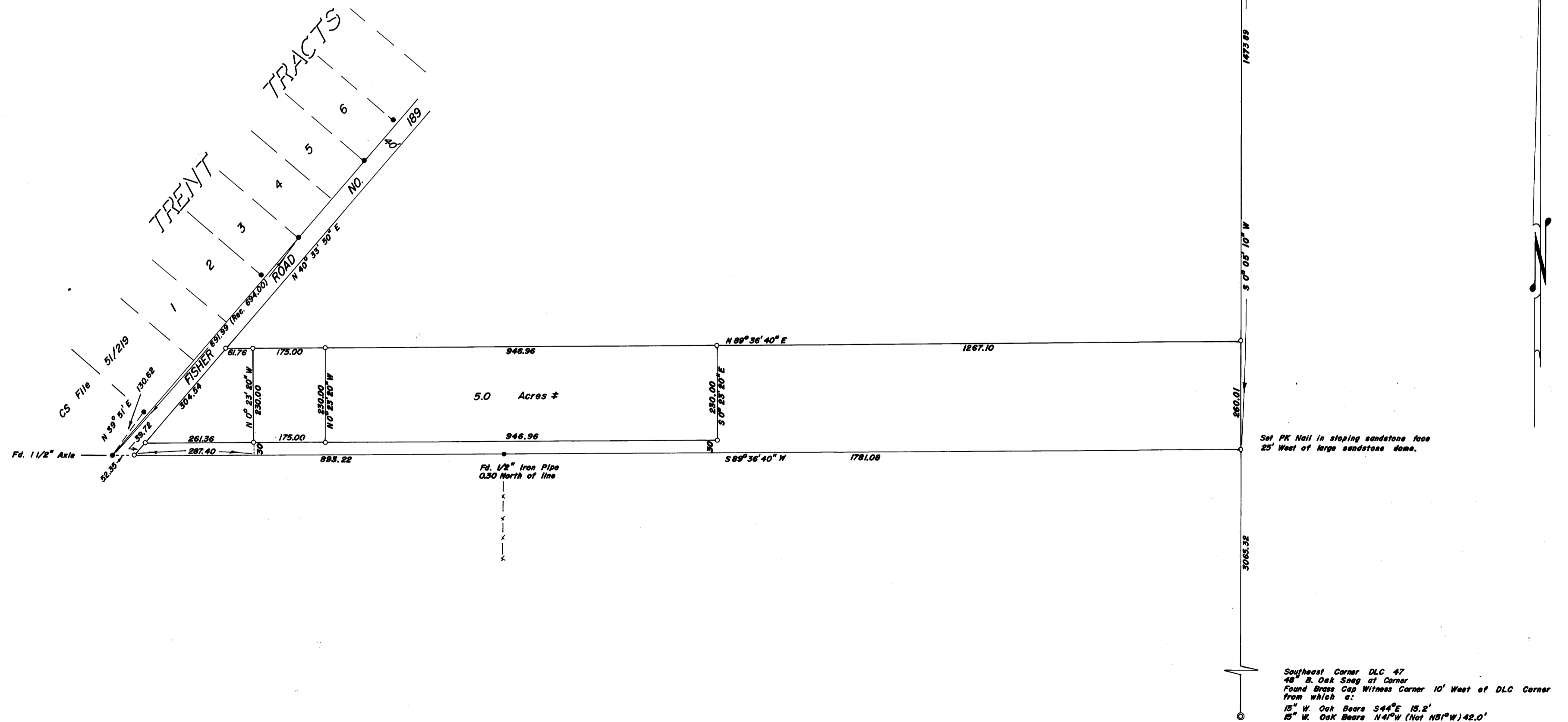
SURVEY IN SECTIONS 26,27, DLC 47, TWP. 26 SOUTH, RNG. 6 WEST, W.M.
Surveyed for Bob Cameron by Don E. Garrett
October 1968
Scale 1" = 200'

•— Found 1/2" Iron Rod
○— Set 5/8" Iron Rod
Bearings are based on a solar observation taken September 26, 1968.

[Signature]
OCT 9 1968
COUNTY SURVEYOR
BENTON COUNTY, OREGON

MAP FILE M-36-1-49

See M 4-23 for 1936 Survey.



REGISTERED
OREGON
LAND SURVEYOR
Don E. Garrett
JULY 14, 1961
DON E. GARRETT
544

MAP FILE M-36-1-49