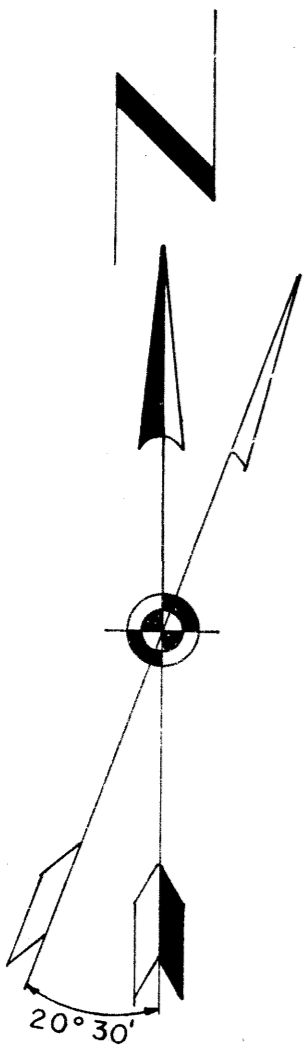
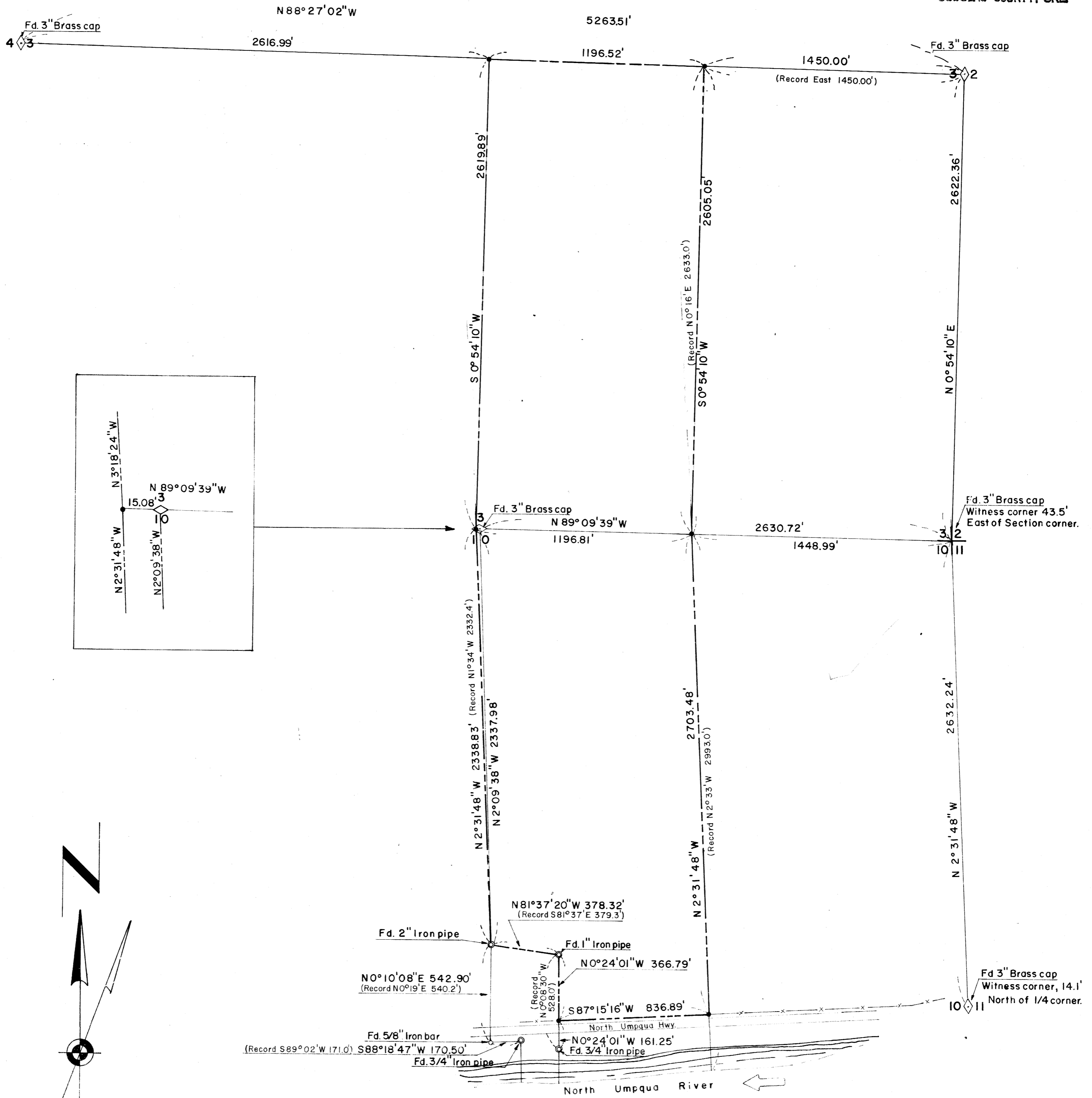


MAP FILE M 36-41A
COUNTY SURVEYORS FILE DATA
DO NOT REMOVE FROM OFFICE

FILED
RECEIVED

APR 15 1970

COUNTY SURVEYOR
DOUGLAS COUNTY, ORE.



Scale: 1" = 400'
Bearings based on Solar Observations.
Records shown based on Douglas County
Deed Records, Vol. 93, Page 188.

• = 5/8" Iron bar set.

Survey for Ralph De Moisy
Located in Sections 3 & 10, T26S, R3W, W.M.
Douglas County, Oregon

by SEEK, INC.

Sept., 1968
Revised: April, 1970

