

COUNTY SURVEYORS FILE DATA
DO NOT REMOVE FROM OFFICE

SURVEY FOR DEED DESCRIPTIONS
IN PORTION OF T. J. GILLHAM D.L.C. NO. 46
SEC. 24, T. 26 S., R. 7 W. W.M.

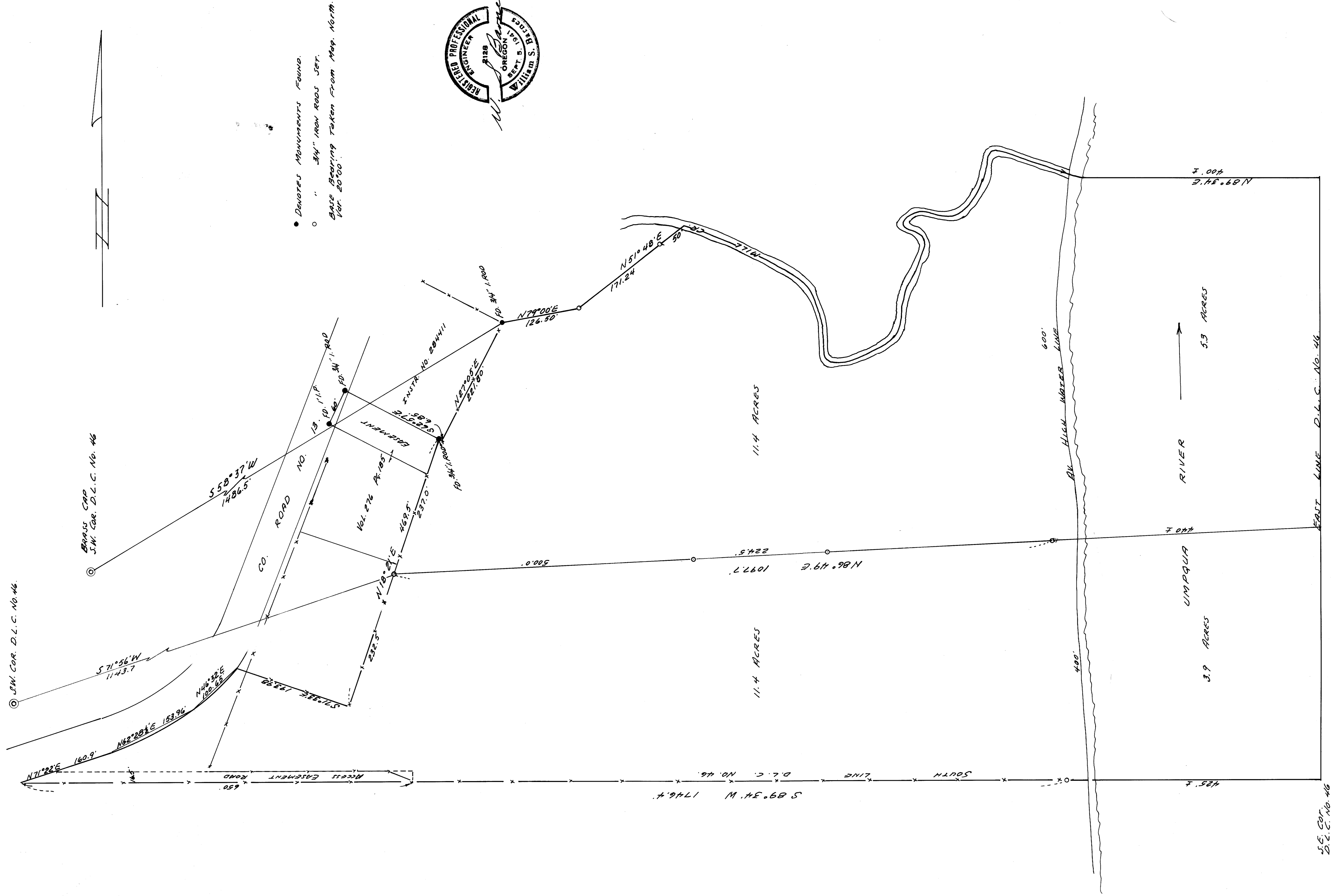
SURVEYED FOR - E.R. LUTMAN & ALL POINTS REALTY
DOUGLAS COUNTY, ORE.
SURVEYED BY - W.S. BARNES

SEPT. 1968
SCALE 1" = 100'

FILED
RECEIVED

SEP 13 1968

COUNTY SURVEYOR
DOUGLAS COUNTY, ORE.



• Denotes Monuments Found.
○ " 3/4" IRON ROD SET.
BASE BEARING TAKEN FROM MAG. NORTH
FOR 20°00'

