

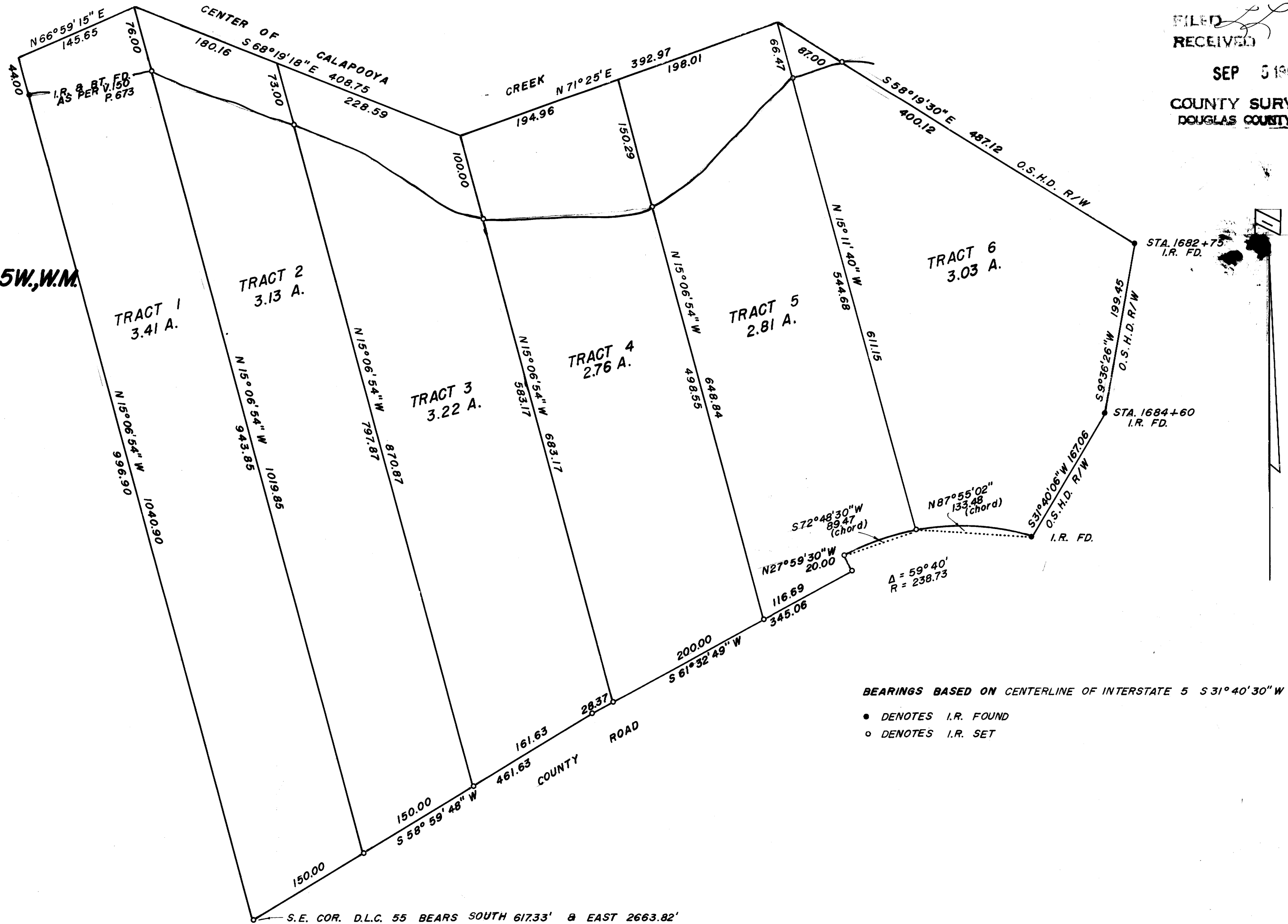
FILED
RECEIVED

SEP 5 1968

COUNTY SURVEYOR
DOUGLAS COUNTY, ORE

COUNTY SURVEYORS FILE DATA
DO NOT REMOVE FROM OFFICE

SURVEY IN SOLOMAN WILLIAMSON D.L.C. 55, T.25 S., R.5 W., W.M.
SURVEYED FOR HARRY J. POTTS
SURVEYED BY R. H. GEE AUGUST, 1968
SCALE 1" = 100'



BEARINGS BASED ON CENTERLINE OF INTERSTATE 5 S 31° 40' 30" W

- DENOTES I.R. FOUND
- DENOTES I.R. SET

S.E. COR. D.L.C. 55 BEARS SOUTH 617.33' & EAST 2663.82'

D NE 1/4 57

MAP FILE M 36-1-33

M 36-33