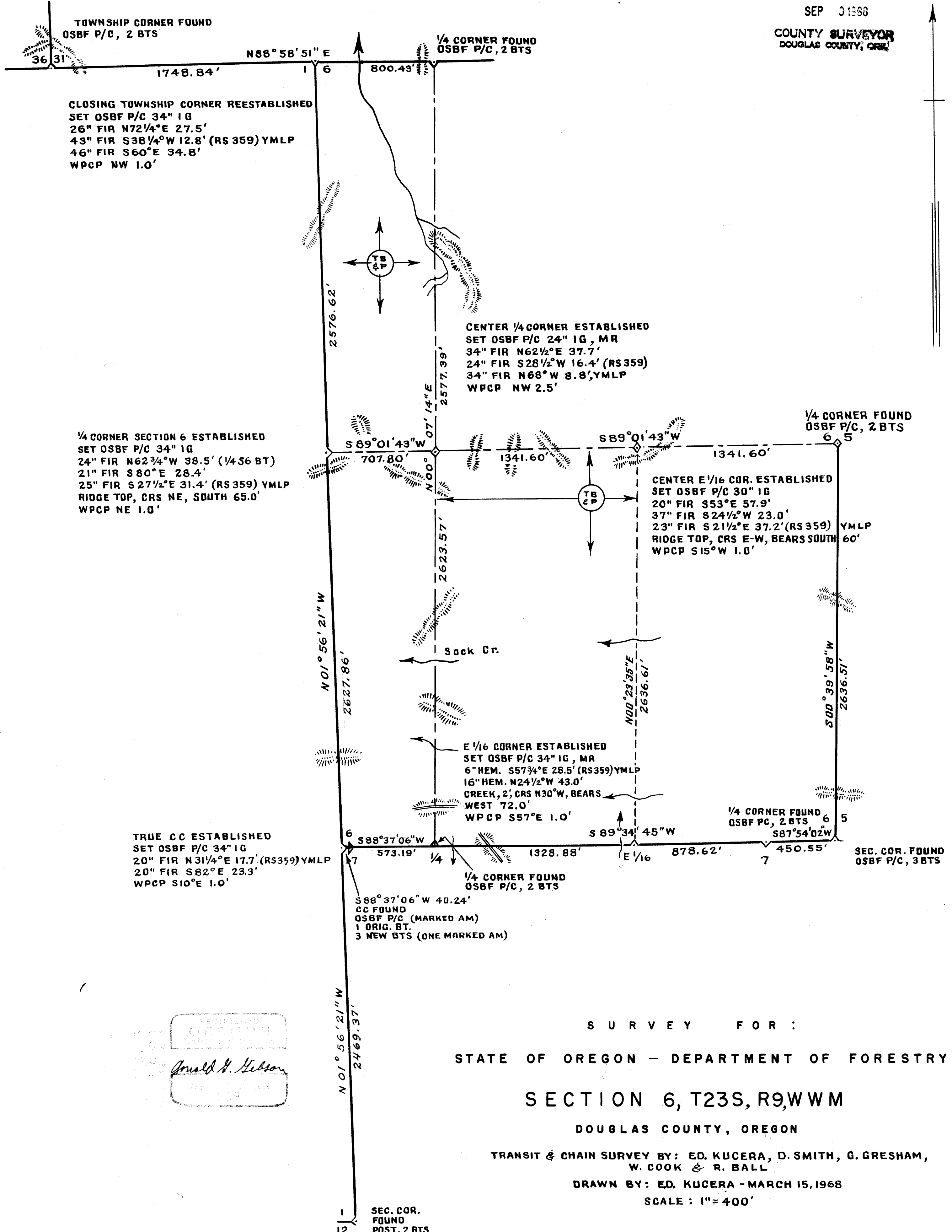


FILED
RECEIVED

SEP 3 1968

COUNTY SURVEYOR
DOUGLAS COUNTY, OREGON



TRUE CC ESTABLISHED
SET OSBF P/C 34" IG
20" FIR N31 1/4° E 17.7' (RS359) YMLP
20" FIR S82° E 23.3'
WPCP S10° E 1.0'

1/4 CORNER SECTION 6 ESTABLISHED
SET OSBF P/C 34" IG
24" FIR N62 3/4° W 38.5' (1/4 S6 BT)
21" FIR S80° E 28.4'
25" FIR S27 1/2° E 31.4' (RS359) YMLP
RIDGE TOP, CRS NE, SOUTH 65.0'
WPCP NE 1.0'

CENTER 1/4 CORNER ESTABLISHED
SET OSBF P/C 24" IG, MR
34" FIR N62 1/2° E 37.7'
24" FIR S28 1/2° W 16.4' (RS359)
34" FIR N68° W 8.8', YMLP
WPCP NW 2.5'

CENTER E 1/16 COR. ESTABLISHED
SET OSBF P/C 30" IG
20" FIR S53° E 57.9'
37" FIR S24 1/2° W 23.0'
23" FIR S21 1/2° E 37.2' (RS359) YMLP
RIDGE TOP, CRS E-W, BEARS SOUTH 60'
WPCP S15° W 1.0'

E 1/16 CORNER ESTABLISHED
SET OSBF P/C 34" IG, MR
6" HEM. S57 3/4° E 28.5' (RS359) YMLP
16" HEM. N24 1/2° W 43.0'
CREEK, 2', CRS N30° W, BEARS
WEST 72.0'
WPCP S57° E 1.0'

S88°37'06" W 40.24'
CC FOUND
OSBF P/C (MARKED AM)
1 ORIG. BT.
3 NEW BTS (ONE MARKED AM)

REGISTERED
GEOLOGICAL SURVEYOR
Douglas County, Oregon
Arnold H. Gibson
RECEIVED

SURVEY FOR:
STATE OF OREGON - DEPARTMENT OF FORESTRY
SECTION 6, T23S, R9W, W
DOUGLAS COUNTY, OREGON

TRANSIT & CHAIN SURVEY BY: ED. KUCERA, D. SMITH, G. GRESHAM,
W. COOK & R. BALL
DRAWN BY: ED. KUCERA - MARCH 15, 1968
SCALE: 1" = 400'

SOLAR OBSERVATION

| | |
|-------------------------|-----------------------|
| MAGNETIC VARIATION | 18° 55' |
| DATE | JULY 18, 1967 |
| STANDARD TIME | 8:55:06 |
| LOCAL | 8:39:54 |
| REF. & PARR. CORRECTION | -0.93' |
| TRUE ALTITUDE | 41° 40' 04" |
| LATITUDE | 43° 36' 42" |
| SUN'S DECLINATION | N 21° 18' 47" |
| PLACE OF OBSERVATION | N35°47'20" W |
| | 714.61' FROM CC 1 & 6 |

- LEGEND
- OSBF P/C = OREGON STATE BOARD OF FORESTRY 1/2" x 3/8" GALV. IRON PIPE WITH 3" BRONZE CAP
 - WPCP = WHITE PAINTED CEDAR POST 4" x 4" x 72"
 - YMLP = YELLOW METAL LOCATION POSTER
 - IG = IN GROUND
 - CRS = COURSE
 - TB & P = TRUE BLAZED & POSTED
 - MR = MOUND OF ROCKS
 - BTS = BEARING TREES

FOR DETAILED REPORT ON RESTORED CORNERS SEE COUNTY RECORDS. NEW CORNERS AND ACCESSORIES MARKED ACCORDING TO "MANUAL OF INSTRUCTIONS FOR THE SURVEY OF THE PUBLIC LANDS OF THE U. S." OTHER MARKINGS AS INDICATED (---) ESTABLISHED = NEW CORNER SET BY OSBF REESTABLISHED = LOST GLO, CADASTRAL OR OTHER CORNER SET BY PROPORTIONATE MEASUREMENT OR AS NOTED.

COUNTY SURVEYORS FILE DATA
DO NOT REMOVE FROM OFFICE