

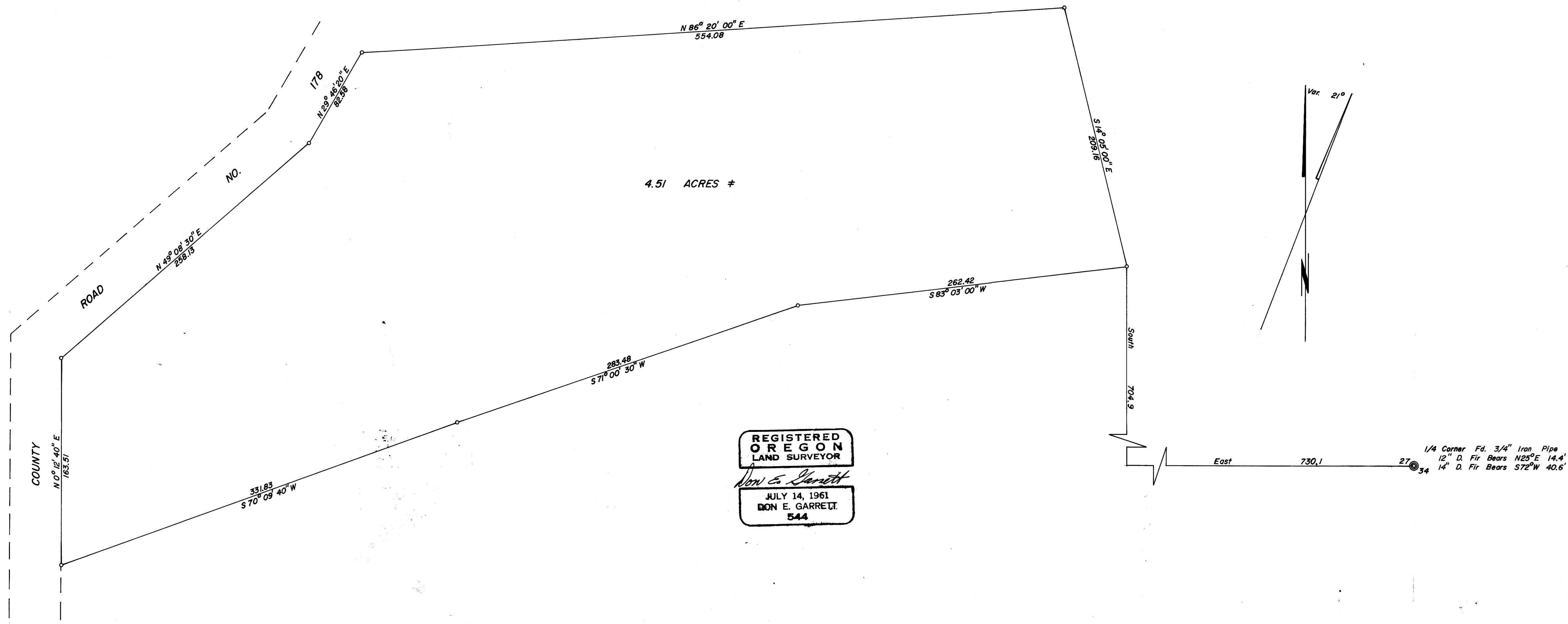
COUNTY SURVEYORS FILE DATA
DO NOT REMOVE FROM OFFICE

FILED
RECEIVED
AUG 2 1968
COUNTY SURVEYOR
DOUGLAS COUNTY, ORE.

MAP FILE M.36.7.28

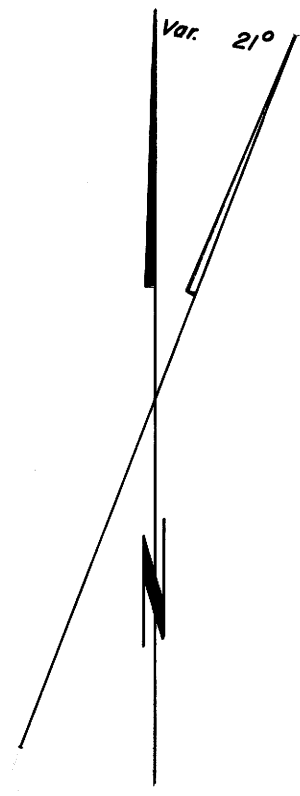
PROPERTY SURVEY IN SEC. 27, TWP. 21 SOUTH, RNG. 5 WEST, W.M.
Surveyed for Keith Roberts by Don E. Garrett
August 1968
o - Set 5/8" Iron Rod.
Bearings are based on a magnetic observation with a 21° 00' East Declination.

Scale 1" = 50'



4.51 ACRES ±

REGISTERED
OREGON
LAND SURVEYOR
Don E. Garrett
JULY 14, 1961
DON E. GARRETT
544



1/4 Corner Fd. 3/4" Iron Pipe
12" D. Fir Bears N25°E 14.4'
14" D. Fir Bears S72°W 40.6'

MAP FILE M.36.7.28