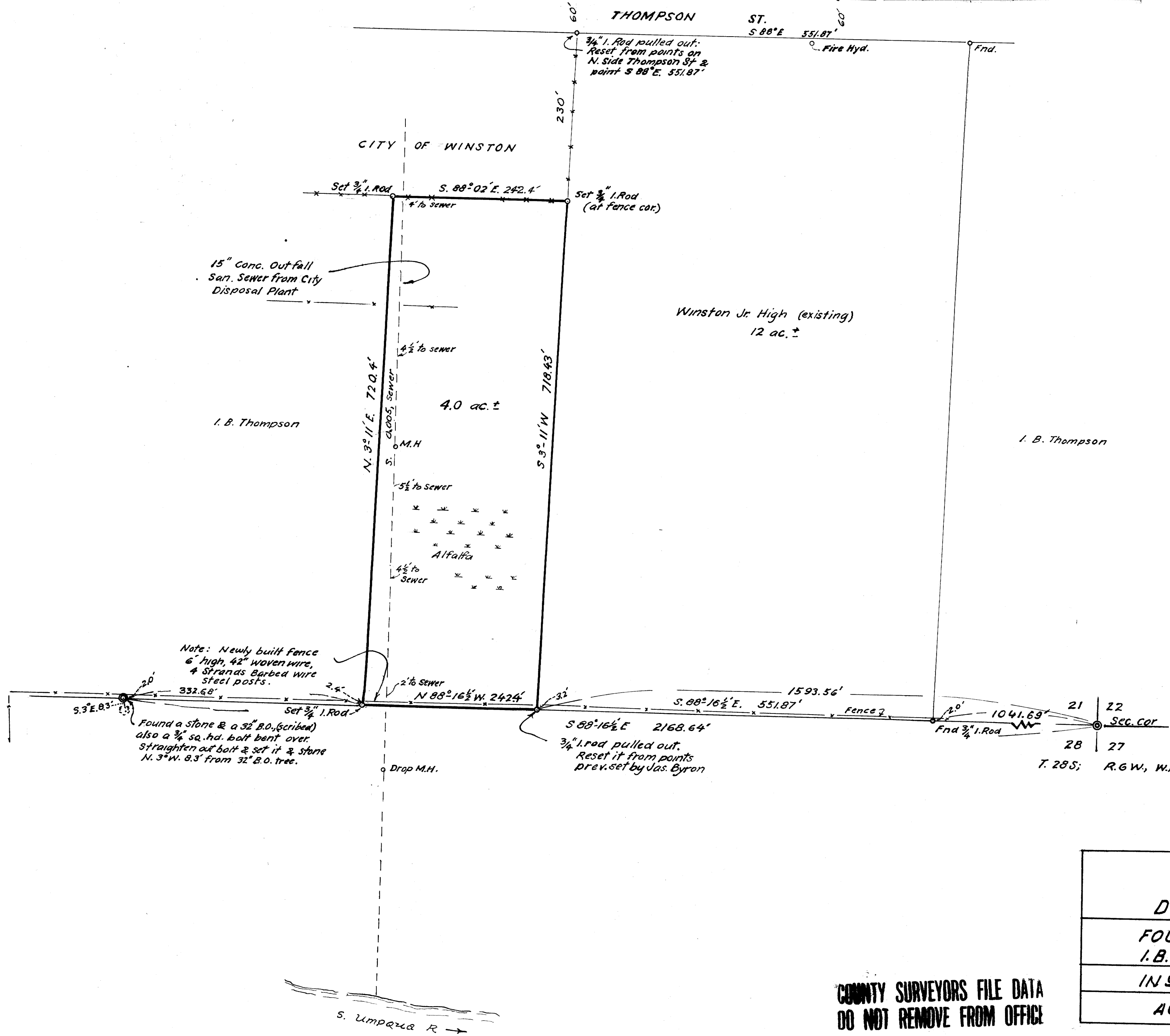
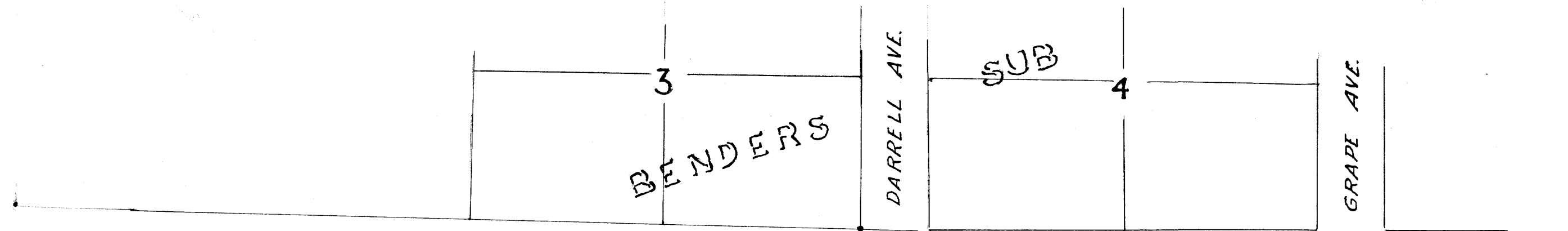


MAP FILE M36 + 28

FILED  
RECEIVED  
AUG 2 11 1968  
COUNTY SURVEYOR  
DOUGLAS COUNTY, ORE.



SCHOOL DIST 116,  
DOUGLAS COUNTY, ORE;  
FOUR ACRE TRACT FROM  
I. B. THOMPSON, WINSTON, ORE.  
IN SW\*SE\*SEC. 21, T.28S; R.6W; W.M.  
AUG. 1968 AB. 1"=100'

COUNTY SURVEYORS FILE DATA  
DO NOT REMOVE FROM OFFICE

MAP FILE M36 + 28