

COUNTY SURVEYORS FILE DATA
DO NOT REMOVE FROM OFFICE

FILED
RECEIVED

JUL 3 1968

COUNTY SURVEYOR
DOUGLAS COUNTY, ORE.

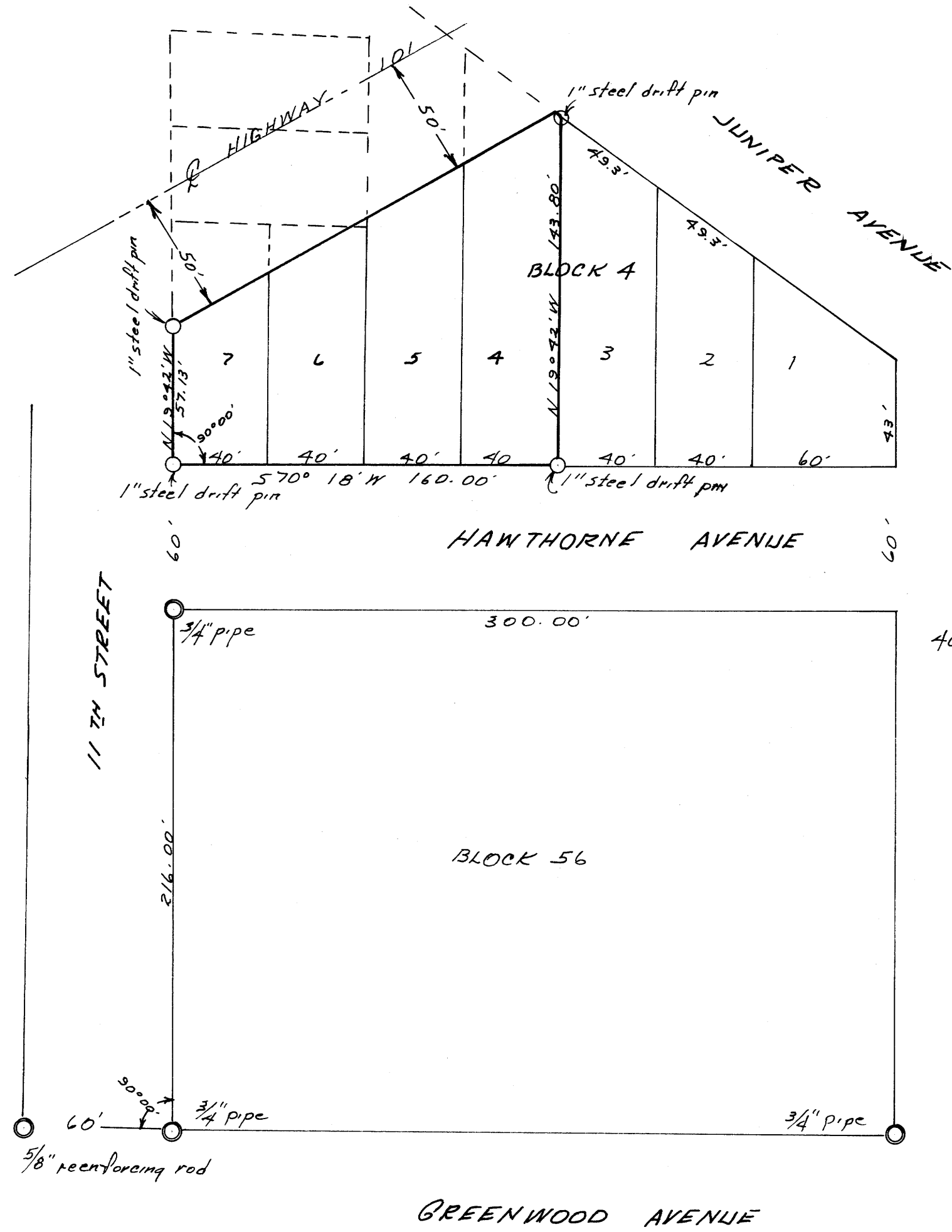
SURVEY OF LOTS 4, 5, 6 & 7,
BLOCK 4, RAINBOW ADDITION 2,
REEDSPORT, DOUGLAS COUNTY, ORE.

T. 21 S., R. 12 W. SEC. 34 DA

for: GROVER WOODS

Scale: 1" = 50'
Corners found: ○
Corners set: ○

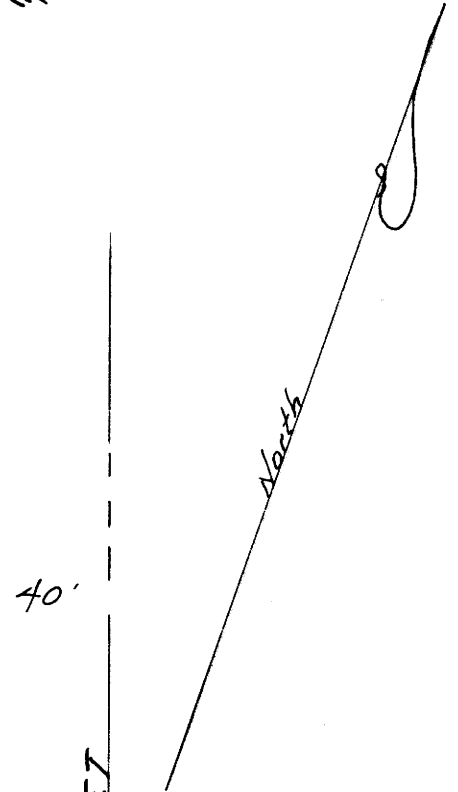
June 25, 1968



REGISTERED
OREGON
LAND SURVEYOR

Warren D. Hootman

MAY 10, 1957
WARREN D. HOOTMAN
399



FILE M 36 7 22