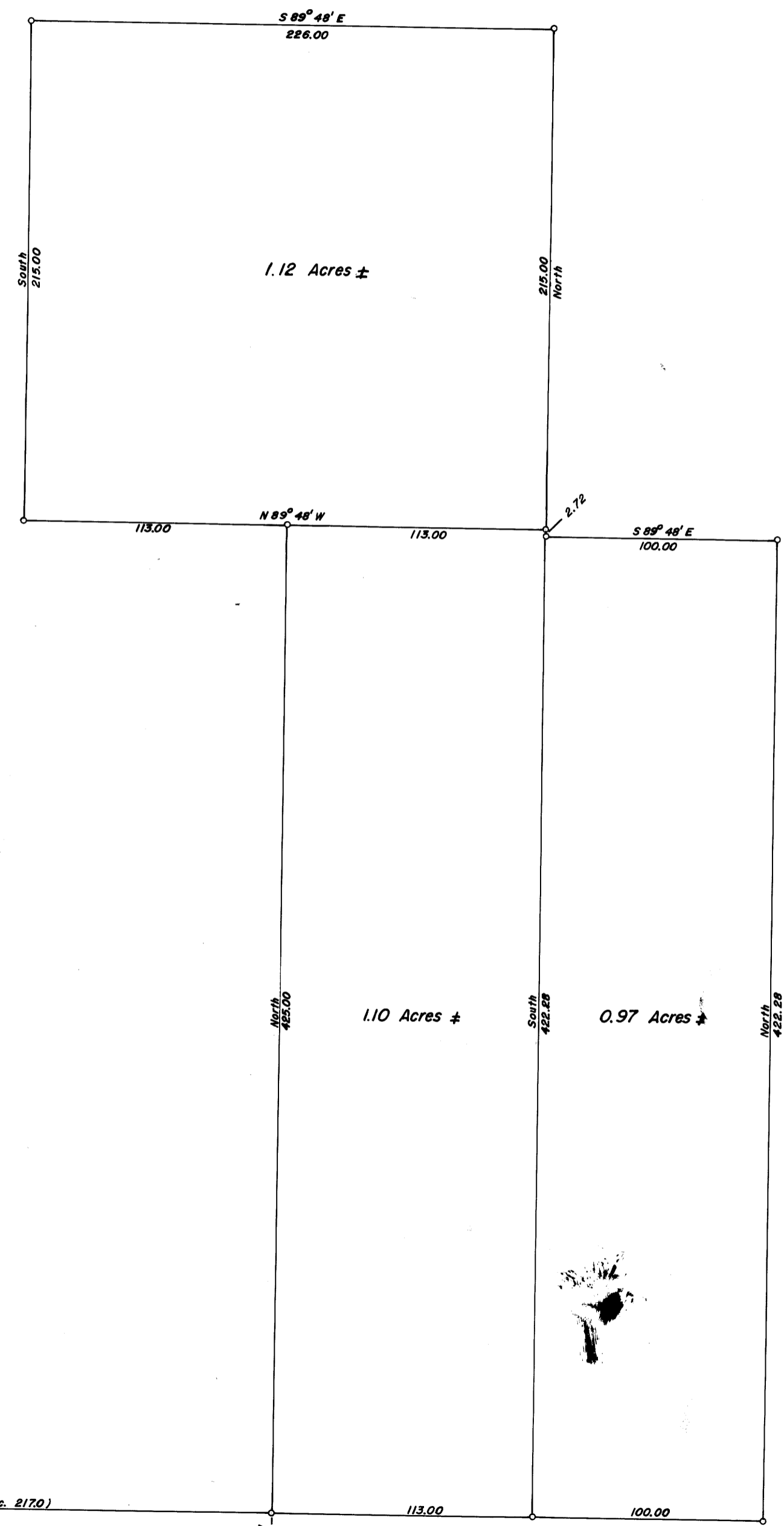


FILED
 RECEIVED
 AUG 5 1968
 COUNTY SURVEYOR
 DOUGLAS COUNTY, ORE.

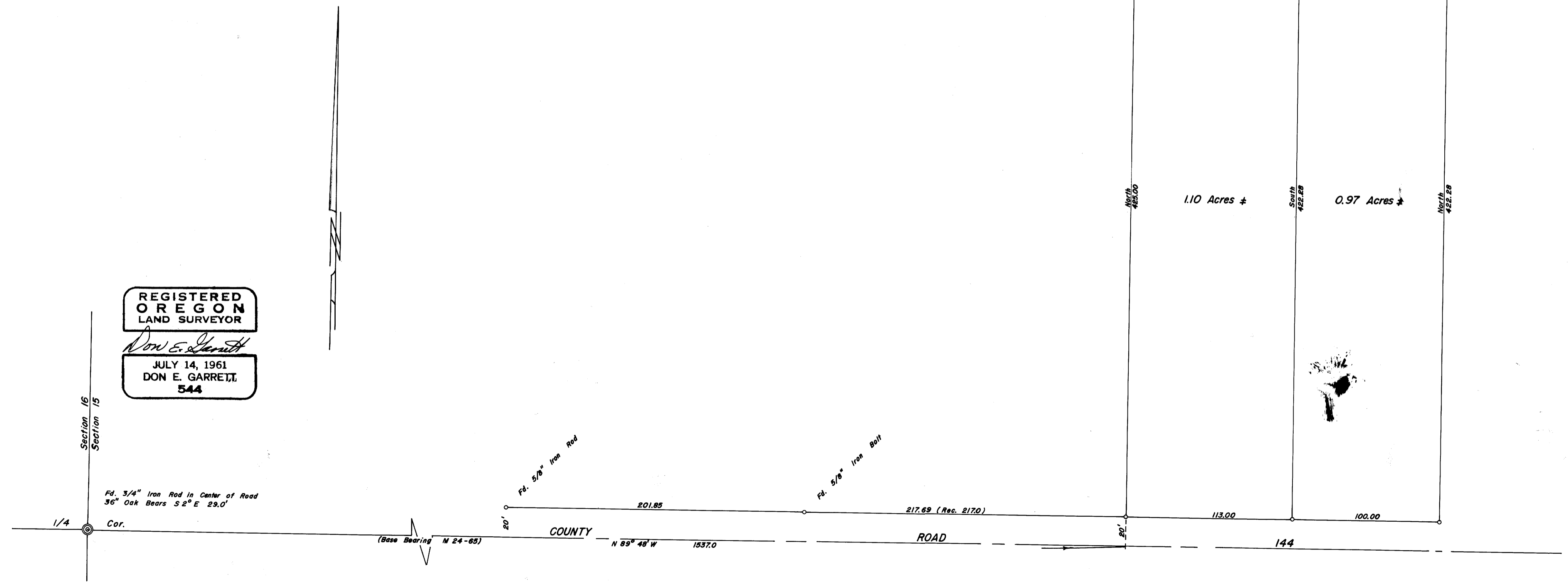
COUNTY SURVEYORS FILE DATA
 DO NOT REMOVE FROM OFFICE

SURVEY IN SECTION 15, TWP. 27 S, RNG. 6 W, W.M.
 Surveyed for Oliver Durand
 Surveyed by Don E. Garrett
 August 1, 1968
 0- Set 5/8" Iron Rod

Scale 1" = 50'



REGISTERED
 OREGON
 LAND SURVEYOR
 Don E. Garrett
 JULY 14, 1961
 DON E. GARRETT,
 544



MAP FILE M36719

MAP FILE M36719