

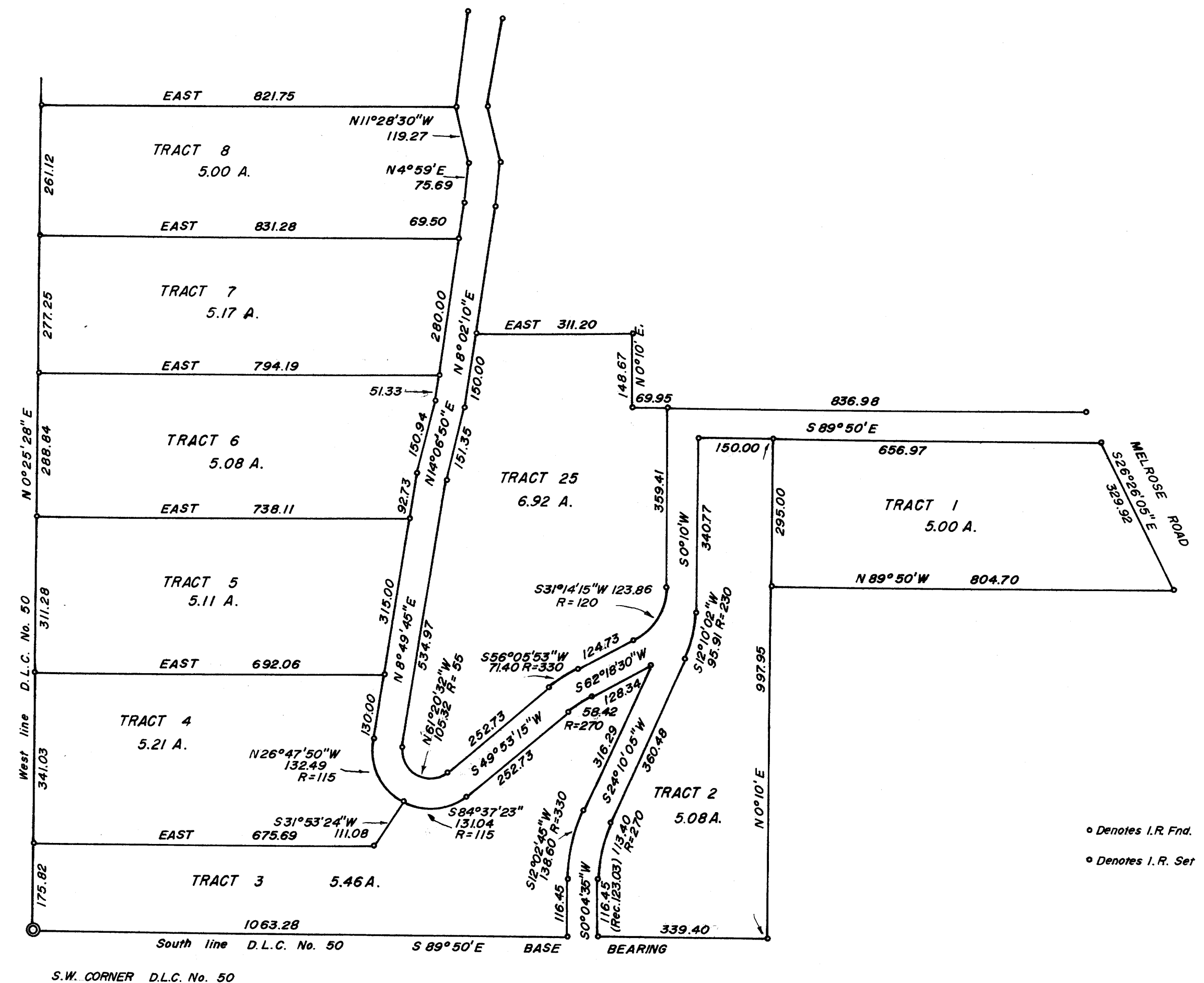
FILED
RECEIVED

JUL 25 1968

COUNTY SURVEYOR
DOUGLAS COUNTY, ORE.

COUNTY SURVEYORS FILE DATA
DO NOT REMOVE FROM OFFICE

SURVEY IN WM.MC KINNEY D.L.C. No. 50, T.27 S., R. 6 W., W.M.
SURVEYED FOR RAY GRAVES
SURVEYED BY R. H. GEE JULY, 1968
SCALE 1" = 200'



- o Denotes I.R. Fnd.
- o Denotes I.R. Set

S.W. CORNER D.L.C. No. 50

MAP FILE M.36 P.17

FILE M.36 P.17