

COUNTY SURVEYORS FILE DATA
DO NOT REMOVE FROM OFFICE

Survey for GARDEN HILLS DEVELOPMENT CO.

Located in Section 12, T27S, R6W, W.M.

Douglas County, Oregon.

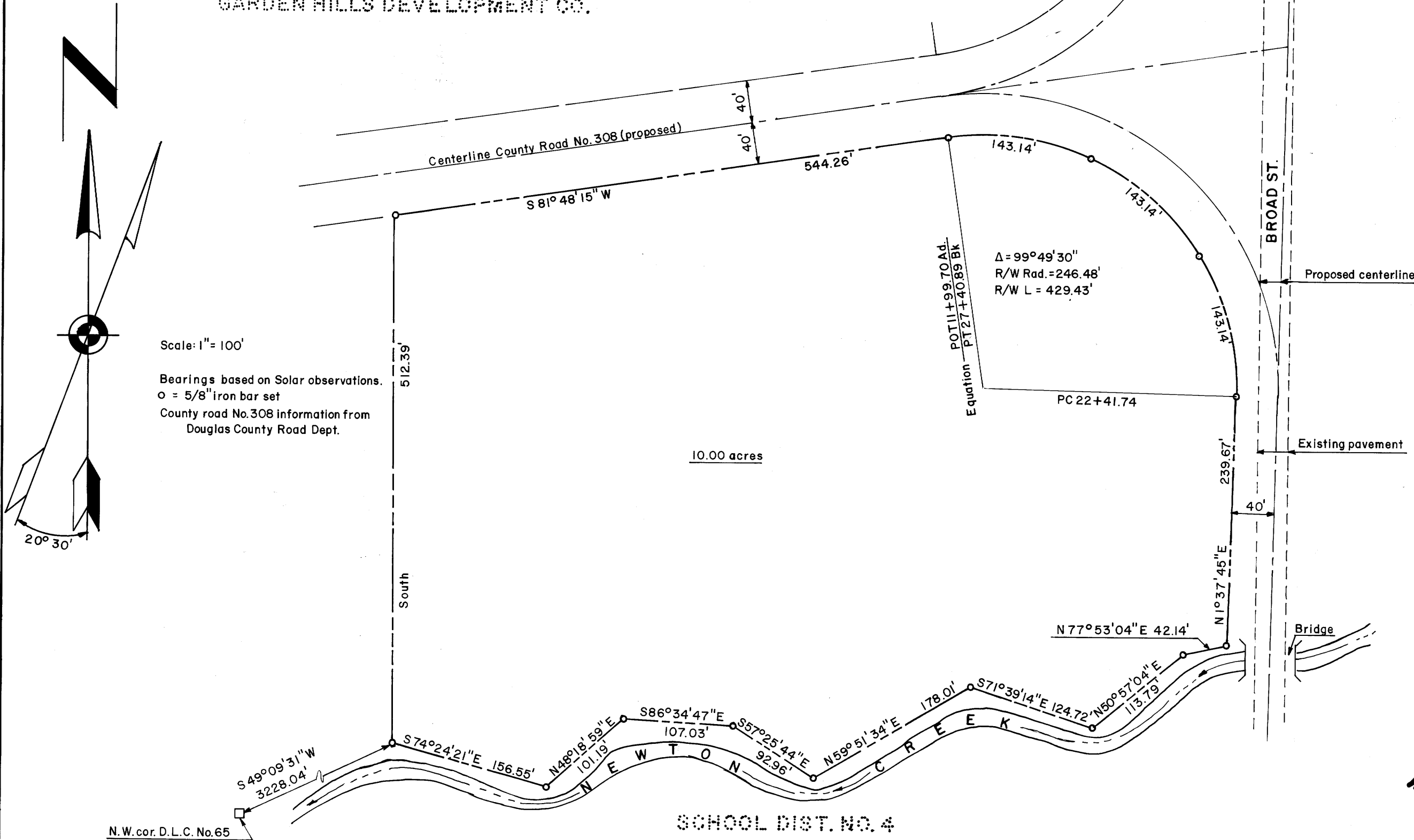
by SEEK, INC. Roseburg, Oregon July 22, 1968

FILED
RECEIVED

JUL 24 1968

COUNTY SURVEYOR
DOUGLAS COUNTY, OREGON

GARDEN HILLS DEVELOPMENT CO.



Scale: 1" = 100'

Bearings based on Solar observations.
o = 5/8" iron bar set
County road No. 308 information from
Douglas County Road Dept.

10.00 acres

REGISTERED
OREGON
LAND SURVEYOR

William C. Stiles

OCT. 4, 1957
WILLIAM C. STILES
432

SCHOOL DIST. NO. 4

N.W. cor. D.L.C. No. 65

FILE M-36 P-15

MAP FILE M-36 P-15