

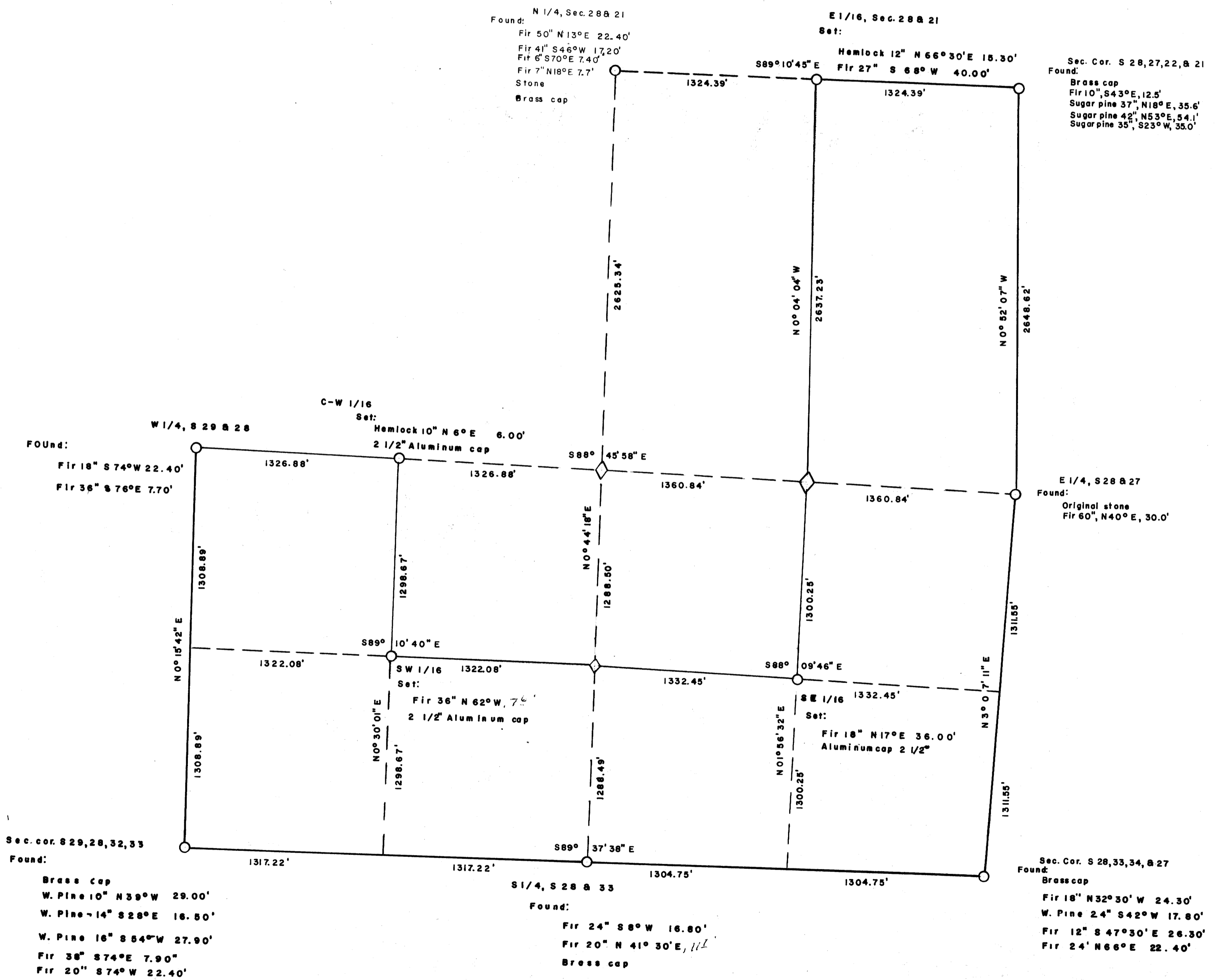
COUNTY SURVEYORS FILE DATA  
DO NOT REMOVE FROM OFFICE

FILED RECEIVED  
JUL 16 1968  
COUNTY SURVEYOR  
DOUGLAS COUNTY, ORE.

# SURVEY OF SECTION 28, T24S, RIW, W.M.

SURVEYED FOR U.S. PLYWOOD-CHAMPION PAPERS INC.  
SURVEYED BY THOMAS E. SHRUM, JR.

JUNE 1967  
SCALE 1" = 500'



PARTIAL  
SEE CORRECTION. M 30-44

9/3 MAP WILL BE CORRECTED BY TOM SHRUM.