

FILED  
RECEIVED

JUN 6 1968

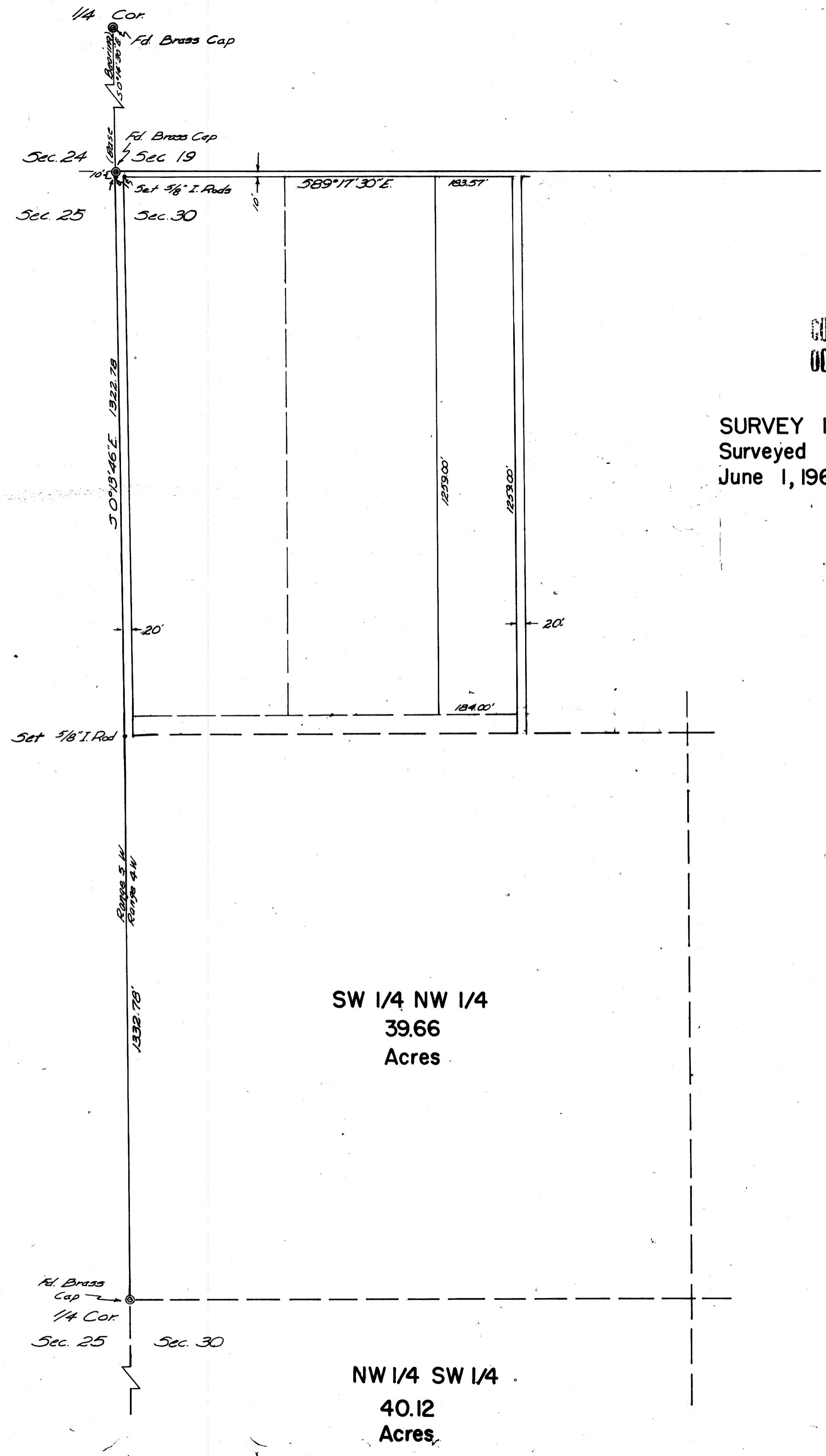
COUNTY SURVEYOR  
DOUGLAS COUNTY, ORE.

MAP FILE M-36-7-1

DO NOT REMOVE FROM OFFICE

SURVEY IN SECTION 30, T27S, R4W, W.M  
Surveyed For Bob Dishman By Don E. Garrett  
June 1, 1968  
Scale 1" = 200'

REGISTERED  
OREGON  
LAND SURVEYOR  
*Don E. Garrett*  
JULY 14, 1961  
DON E. GARRETT  
544



DIAZO COPY MADE  
APRIL 1999, USING A  
"REPROTECHNOLOGY 5000"  
BLUEPRINT MACHINE

MAP FILE M-36-7-1