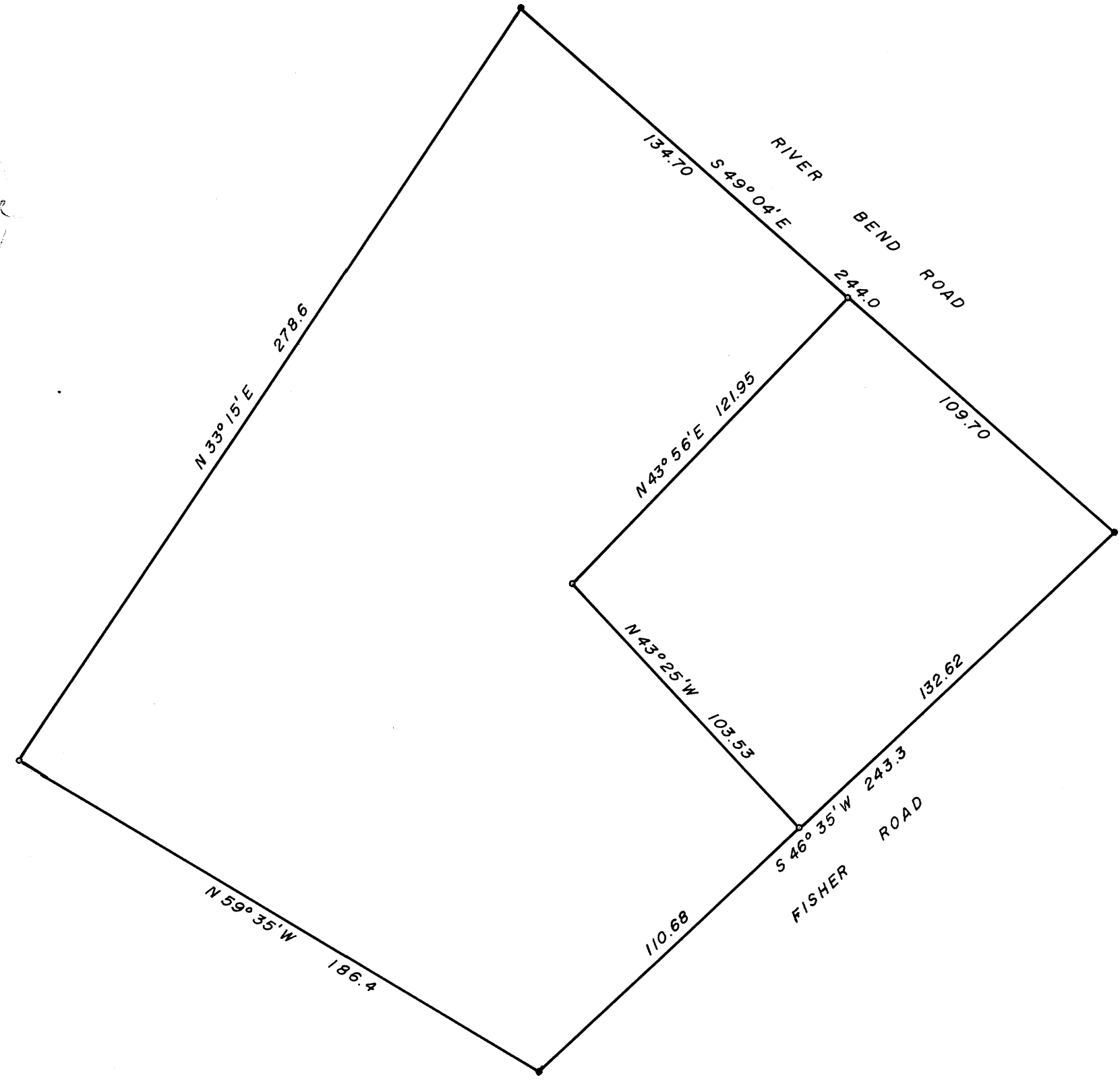


COUNTY SURVEYORS FILE DATA
DO NOT REMOVE FROM OFFICE

SURVEY IN LOT 3, RIVER BEND ACRES
SURVEYED FOR G. F. REYNOLDS
SURVEYED BY R. H. GEE
DEC. 1967 SCALE 1" = 40'

M 35-9



- DENOTES MONUMENT FOUND
- DENOTES 5/8" I. ROD SET

RECEIVED
DEC 18 1967
COUNTY SURVEYOR
CLATSOP COUNTY, ORE

M 35-9
6