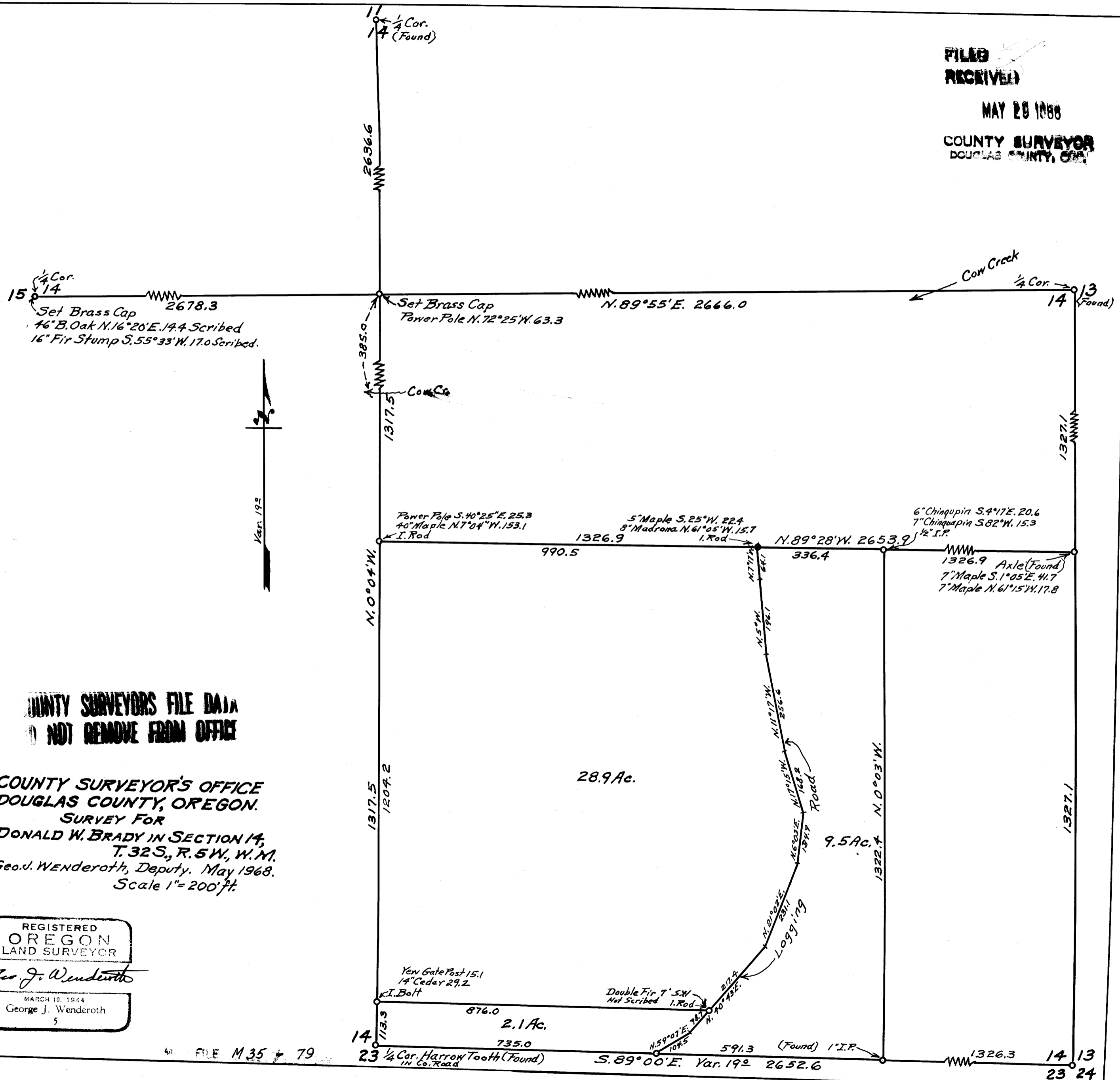


FILED
RECEIVED
MAY 20 1968
COUNTY SURVEYOR
DOUGLAS COUNTY, OREGON



COUNTY SURVEYORS FILE DATA
NOT REMOVE FROM OFFICE

COUNTY SURVEYOR'S OFFICE
DOUGLAS COUNTY, OREGON.
SURVEY FOR
DONALD W. BRADY IN SECTION 14,
T. 32 S., R. 5 W., W. M.
Geo. J. Wenderoth, Deputy. May 1968.
Scale 1" = 200' ft.

REGISTERED
OREGON
LAND SURVEYOR
Geo. J. Wenderoth
MARCH 10, 1944
George J. Wenderoth
5