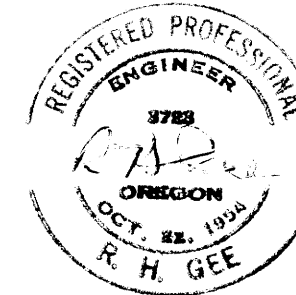
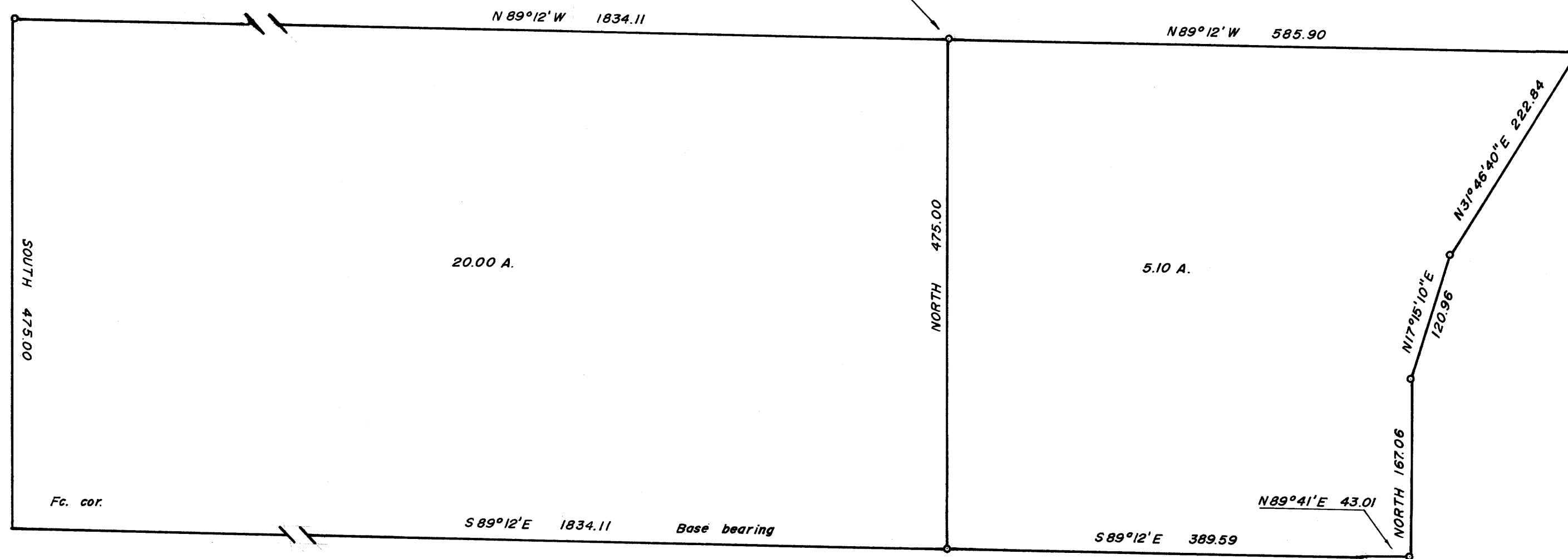


COUNTY SURVEYORS FILE
DO NOT REMOVE FROM FILE

SURVEY IN SEC. 19, T. 26 S., R. 3 W. AND SEC. 24, T. 26 S., R. 4 W., W.M.
SURVEYED FOR C. W. HAYNES
SURVEYED BY R. H. GEE - APRIL, 1968 - SCALE 1" = 100'



Initial Point
SW Cor. Thomas Shrum D.L.C. No. 42 bears
North 684.63 and East 1167.34



o 3/4" I.R. Fd.
o 5/8" I.R. Set

FILED
RECEIVED
MAY 23 1968
COUNTY SURVEYOR
DOUGLAS COUNTY, ORE.

FILE M 35 7 77

FILE M 35 7 77