

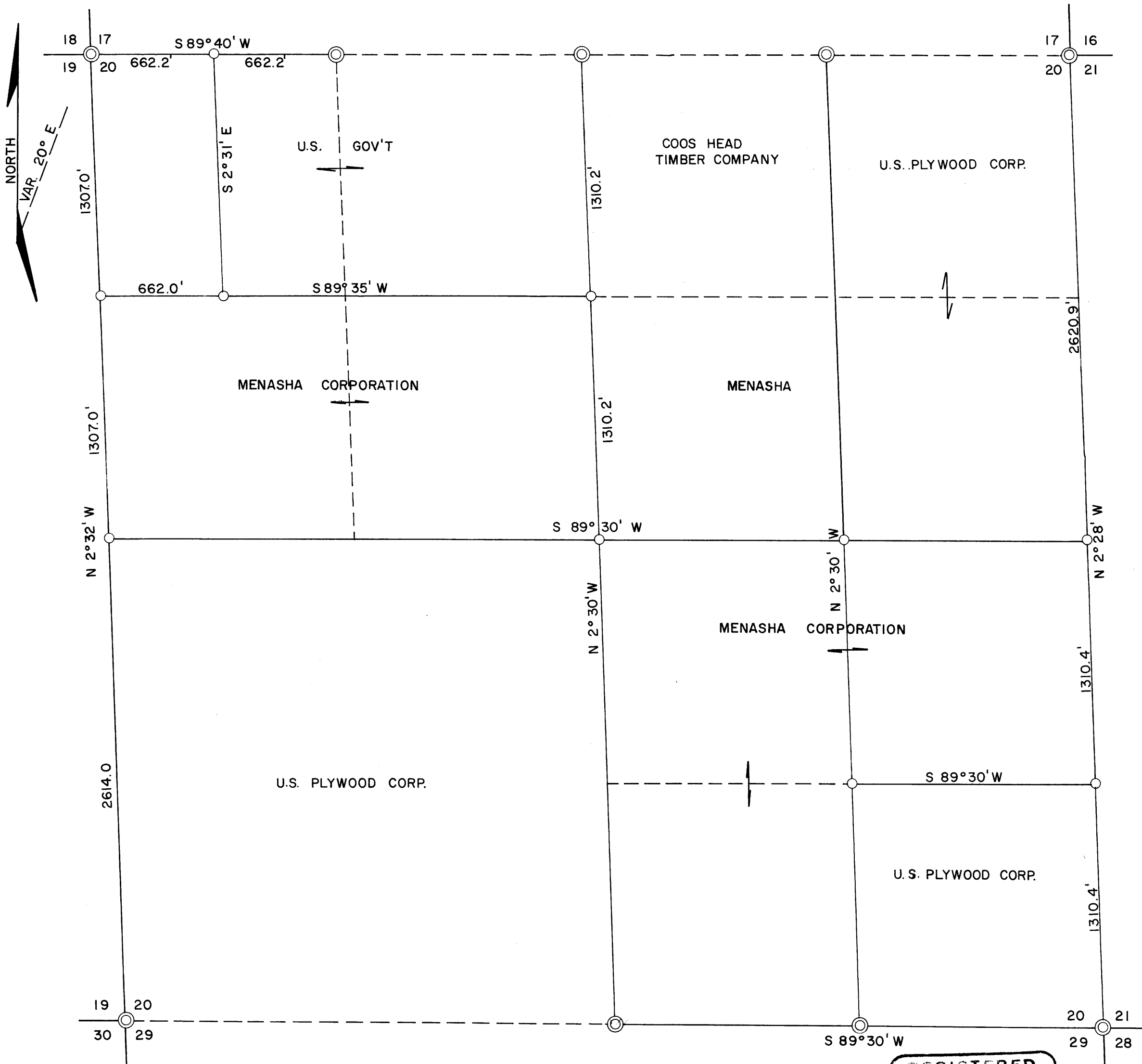
SURVEY FOR MENASHA CORP. & U.S. PLYWOOD CORP.

SEC. 20 T20S R11W WM
DOUGLAS COUNTY, OREGON

[Signature]
L. DURHAM

EX 6 103

COUNTY SURVEYOR
DOUGLAS COUNTY, OREGON



CORNERS SET — ○
CORNERS FOUND — ⊙

DATE: 1966-67

SCALE: 1" = 500'

REGISTERED
OREGON
LAND SURVEYOR

Ronald L. Durham

JULY 12, 1963
RONALD L. DURHAM
606

MENASHA CORPORATION

FILED
RECEIVED

MAY 6 1968

COUNTY SURVEYOR
DOUGLAS COUNTY, ORE.



LAND AND TIMBER DIVISION

P. O. BOX 588 NORTH BEND, OREGON • 503 • 756-4136

January 10, 1968

Mr. James Byron
Douglas County Surveyor
Roseburg, Oregon

Dear Mr. Byron:

The following notes pertain to the subdivision of Section 20, Township 20 South, Range 11 West.

The survey work was conducted jointly between United States Plywood Corporation, United States Forest Service and Menasha Corporation.

The east line of the Section was run beginning at the NE corner thereof which is marked by an iron pipe, thence south on a variation of 20° E to the SE corner of the section; resultant bearing $S2^{\circ} 28' E$ a distance of 5,241.7 feet.

At the midpoint, the E $1/4$ corner was established by driving into the ground a $1\frac{1}{4}$ inch iron pipe from which:

- A 24 inch red cedar stump bears $N 17^{\circ} E$, 30.2 feet, scribed $1/4 S B.T.$
 - #54* A red cedar stump 30 inch diameter bears East, 56.8 feet scribed $1/4 S B.T.$
- Both B.T. are tagged and measured from the face; corner is approximately 50 feet west of main creek bottom.

The S $1/16$ corner was established midway between the E $1/4$ corner and the SE corner marked with a 2" aluminum pipe from which;

- A 4" X 6" post on the road bears $N 5^{\circ} W$, 85.0 feet
 - A 4" X 6" post on the road bears $N 83^{\circ} 30' W$, 60.3 feet
 - A 40" D.fir bears $S 7^{\circ} E$ 53.8 feet, bark scribed S $1/16 B.T.$
- All accessories are tagged.

The south line of the section was surveyed a few years ago by Gleason & Lamb and subsequently the S $1/4$ corner and the E $1/16$ corner on that line were established. At the S $1/4$ corner I set a 2" aluminum pipe from which;

- #55* A 16" hemlock bears $N 38^{\circ} 30' W$ 37.2 feet scribed $1/4 S B.T.$ (Tagged)
- Leitel Creek road bears west 100 feet distant approximately.

At the E $1/16$ corner position on the south line of the section I set a 2" aluminum pipe from which;

- A 54" spruce bears $S 24^{\circ} E$ 8.6 feet scribed S 29 $1/16 B.T.$ (Tagged).
- A 66" Spruce bears $N 79^{\circ} W$ 12.7 feet scribed S 20 $1/16 B.T.$

C.S. File 55/65 A

Map File M 35 f 74

Both B.T.s have U. S. Plywood tags and scars similar to old B.T. faces. This corner falls on a NW-SE spur ridge. By running the East 1/2 of the south line with compass only, the bearing was determined to be $S89^{\circ} 30' W$.

Thence from the SW corner of the section I run north to the NW corner. Resultant bearing $N 2^{\circ} 32' W$, distance 5,228.0 feet.

At the midpoint I set a 3" post for 1/4 corner from which:

- A 24" spruce bears $N 65^{\circ} W 19.8$ feet
- A 12" spruce bears $N 26^{\circ} E 1.5$ feet.
- #56 (These trees faced, but not scribed)
- At a later date I will scribe the B.T.s and set a more durable monument.

At the midpoint between the W 1/4 corner and the NW corner I mark the N 1/16 corner position by driving into the ground a 2" aluminum pipe from which:

- A 20" red alder bears $S 18^{\circ} W 57.6$ feet scribed 1/16 B.T. (B.T. sets on north bank of creek)
- An 18" red alder bears $S 21^{\circ} E 59.1$ feet scribed 1/16 S 20 B.T.
- Both B.T.s are tagged.

Thence from the N 1/4 corner I run $S 2^{\circ} 30' E$ through the center of the section (chaining the $N\frac{1}{2}$ mile) and closed 4.9' west of the S 1/4 corner.

Thence from the E 1/4 corner I run $S 89^{\circ} 30' W$ through the center of the section and closed 7.0 feet south of the W 1/4 corner.

At the intersecting point I drive into the ground a 2" aluminum pipe for the center 1/4 corner from which:

- A 10" cedar bears $N 30^{\circ} E 7.7$ feet scribed C 1/4 B.T. (tagged).
- #57 A 44" fir bears $N 1^{\circ} 30' E 64.5$ feet bark scribed C 1/4 B.T. (tagged).

I set the CN 1/16 corner with a 2" aluminum pipe from which:

- A 38" hemlock bears $S 19^{\circ} W 48.8$ feet scribed CN 1/16 BT (tagged)
- A 38" hemlock bears $N 78^{\circ} E 66.0$ feet scribed CN 1/16 B.T. (tagged).

A creek 4 inches wide bears north 24 feet flowing $S 68^{\circ} W$.

Thence I run from the CN 1/16 corner $S89^{\circ} 35' W$ to the N 1/16 on the west line of the section, chaining the last 662.0 feet. At the beginning of the chained distance I mark a 56" fir $N 8\frac{1}{2}^{\circ} E 12$ feet from a property corner position.

Thence I begin at the W 1/16 on the north line of the Section and run to the NW corner of the section on a bearing of $S89^{\circ} 40' W 1324.4$ feet. I set the 1/64 corner between the two points using a 2" aluminum pipe from which:

- A 60" cedar bears $S 72^{\circ} W 15.6$ feet scribed 1/64 B.T. (tagged)
- A 20" hemlock bears $N 15^{\circ} W 32.20$ feet scribed 1/64 B.T. (tagged).

C.S. File 55/65 b

Map File M.35 + 74

Thence I begin at the E 1/16 corner on the south line and run N 2 $\frac{1}{2}$ °W and closed 16.2 feet east of the E 1/16 corner on the north line.

I set the CE 1/16 corner with a 2" aluminum pipe from which:

- A 48" fir bears S 21°E 12.0 feet bark scribed CE 1/16 BT
- A 10" hemlock bears S 80°E 10.5 feet scribed CE 1/16 BT.

Thence, from the S 1/16 corner on the east line I run S89°30'W to the intersection of the North-South 1/16 line in the SE $\frac{1}{4}$, being the average bearing of the north and south lines of the SE $\frac{1}{4}$ and establish the SE 1/16 corner with a 2" aluminum pipe from which:

- A 32" cedar bears S 13°W 24.4 feet scribed 1/16 BT
- A 38" spruce bears N 63°W 38.3 feet scribed 1/16 BT (tagged).

The SE 1/16 corner was not established in accordance with the rules but after becoming familiar with all the exterior and subdivisional lines of the section a degree of confidence was garnered with the instruments and personnel.

Thus the SE 1/16 as established will be regarded between the adjacent owners as the true, legal center of the SE $\frac{1}{4}$ of Section 20.

Witness to Survey:

- Walter Camp, U. S. Plywood Corp.
- Ralph Briggs, U. S. Forest Service
- Frank Lyon, Menasha Corporation

Respectfully submitted for Record

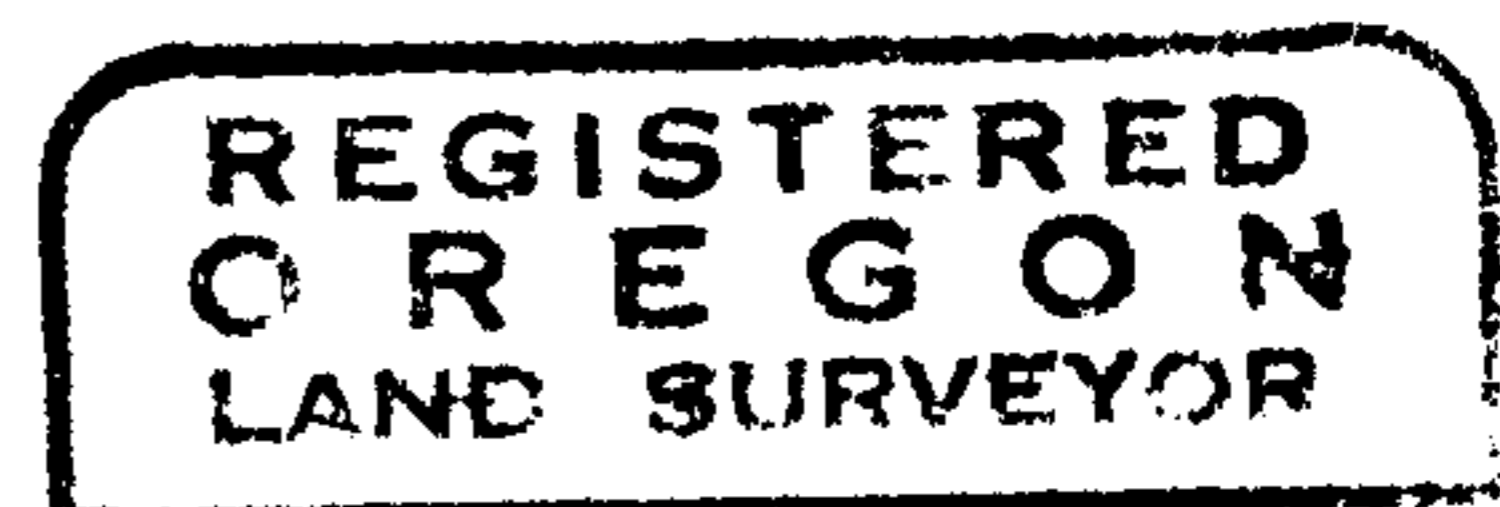
Ronald L. Durham,
Menasha Corporation

RLD:LI

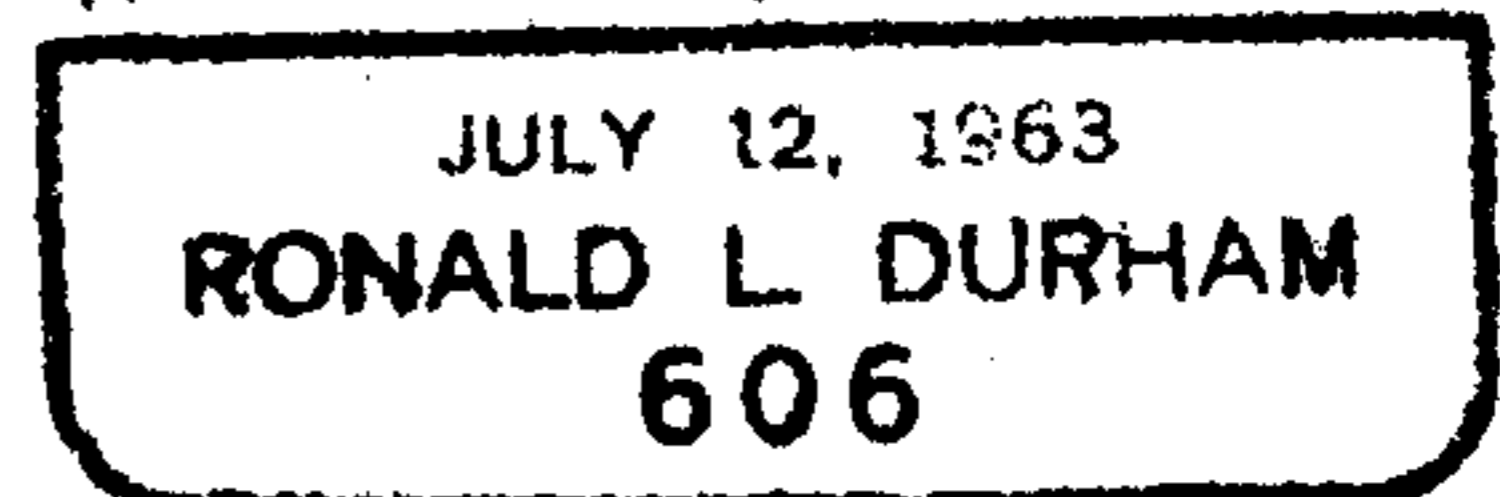
FILED
RECEIVED

MAY 6 1968

COUNTY SURVEYOR
DOUGLAS COUNTY, ORE.



Ronald L. Durham



C.S. File 55/65C

Map File M 35 + 74

Sta.	Dist.	42 L _L	R _L	M.B.	C.C.
10+31 ³	48 ³				
9+83 ⁵	97 ⁶				
8+85 ⁹	78 ³				
8+07 ⁵	67 ⁴				
7+40 ²	183 ⁵				
5+56 ⁷	68 ²				
4+87 ⁸	60 ¹				
4+27 ⁷	25 ⁹				
4+01 ⁸	25 ²				
3+76 ⁶	115 ⁸				
2+60 ⁵	97 ⁴				
1+63 ⁴	163 ⁴				
0+00				N	N

Boundary Survey Done (Name) between sections 23, 24

1933

(SEE FOLDER FOR REMAINING INFO.)

Top of spur, course E and W, desc abruptly

Sec. Cor 23, 24, 25, 26, T 23-S, 1933