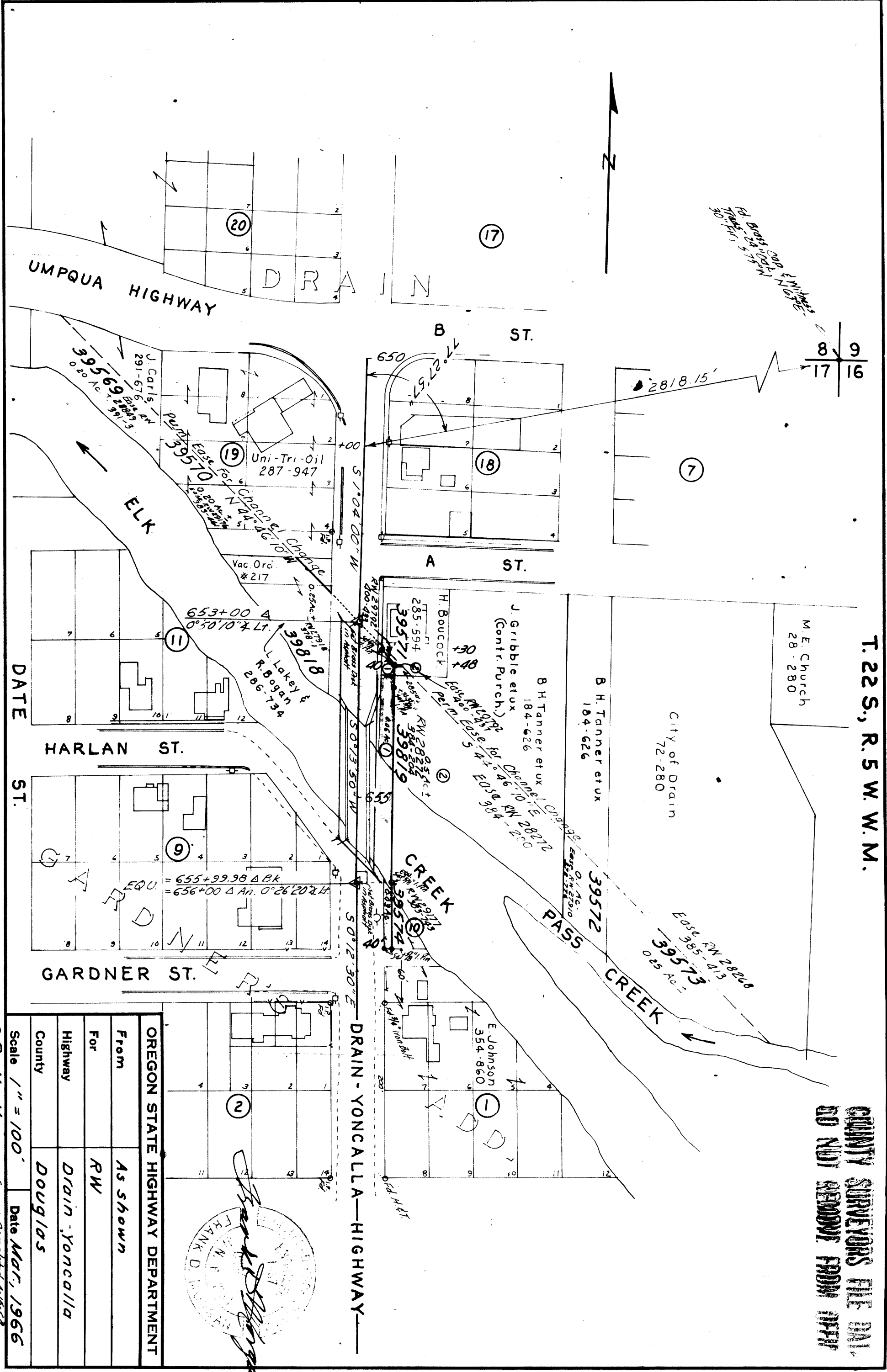


COUNTY SURVEYORS FILE MAP
DO NOT REMOVE FROM OFFICE

T. 22 S., R. 5 W. W. M.



OREGON STATE HIGHWAY DEPARTMENT	
From	As Shown
For	RW
Highway	Drain-Yoncalla
County	Douglas
Scale	1" = 100'
Date	Mar, 1966



38-11-11
48-16-12
Survey Completed 4-15-68
Submitted to County 4-22-68