

COUNTY SURVEYORS FILE DATA  
DO NOT REMOVE FROM OFFICE

SURVEY IN SEC. 30, T26S, R5W, W.M.  
Surveyed for John Amacher by Don E. Garrett  
November 30, 1967 Scale 1" = 50'

o - Set 5/8" I. Rod

REGISTERED  
OREGON  
LAND SURVEYOR  
*Don E. Garrett*  
JULY 14, 1961  
DON E. GARRETT  
544

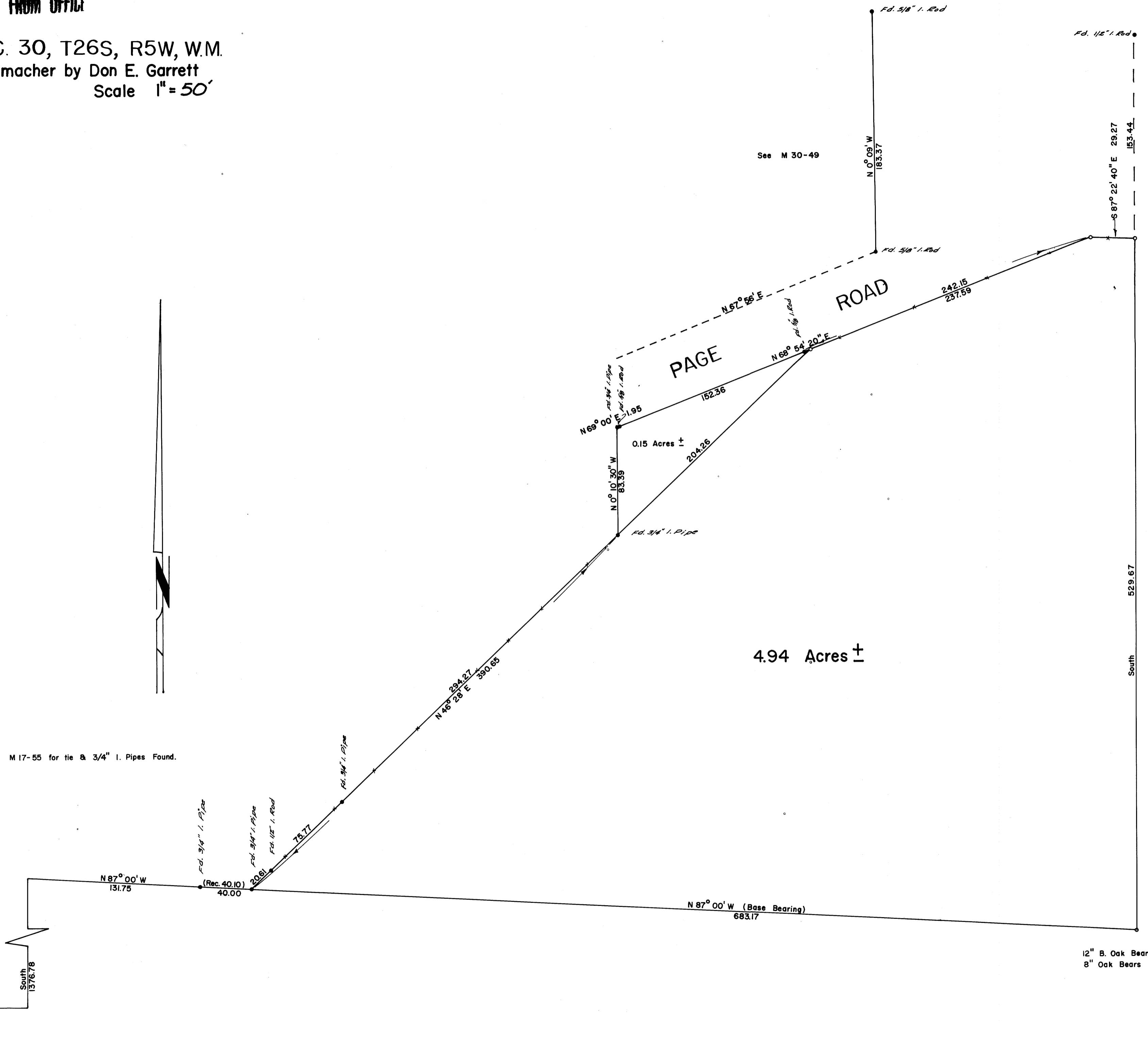
FILED  
RECEIVED

DEC 4 1967

COUNTY SURVEYOR  
DOUGLAS COUNTY, ORE.

See M 17-55 for tie & 3/4" I. Pipes Found.

1/4 Cor.  
T26S R6W WM  
S25  
S30  
West  
1107.91



See M 30-49

4.94 Acres ±

DIAZO COPY MADE  
APRIL 1999, USING A  
"REPROTECHNOLOGY 5000"  
BLUEPRINT MACHINE

12" B. Oak Bears N 12° 45' E 70.2'  
8" Oak Bears S 56° 30' W 34.8'

MAP FILE M 35-7

MAP FILE M 35-7